

Have you
kissed a fish
today?

Capt. Whitney Curry

TexasFloatingClassroom.com

361-717-4176



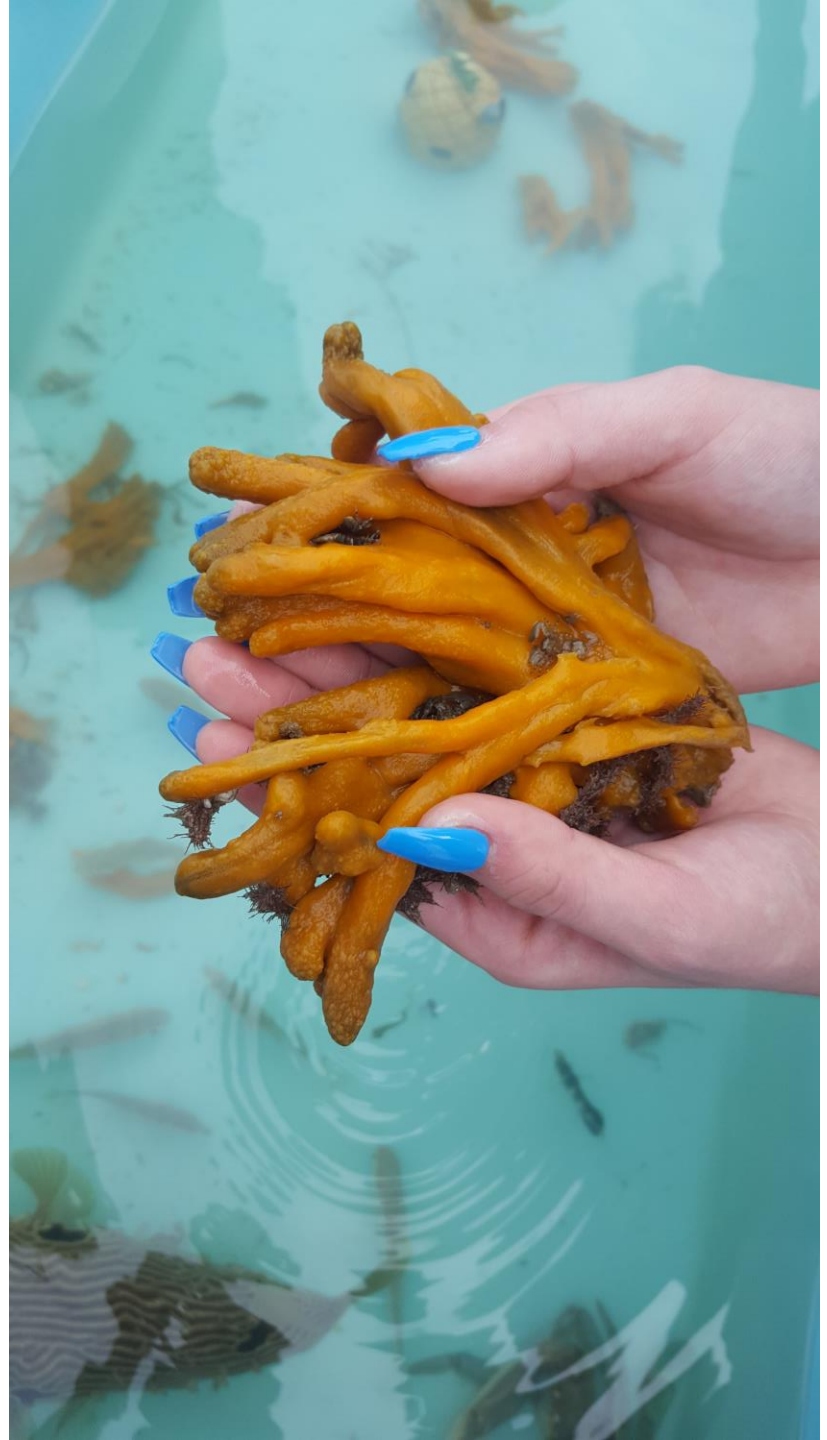
“No one will protect what they don't care about; and no one will care about what they have never experienced.”

-David Attenborough













Department of
ATM OCEANOGRAPHY
COLLEGE OF GEOSCIENCES

completed this site on: 11/4/19
Emailed to:
Dr. Chrissy Wiederwohl (chrissy.wiederwohl@atm.edu)

DATA COLLECTION LOG

DATE: 11/4/19 TIME: 10:48am

DATA COLLECTOR'S NAME: Mackenzie Bary RHTS Aquatic Science 1st

WEATHER CONDITIONS: Good, Sunny, Warm, No wind

LATITUDE: 28°1'8" LONGITUDE: 97°2'50" WATER DEPTH: 9ft

SECCHI DISK DEPTH: 1100cm SALINITY (REFRACTOMETER): 25 ppt or 2.5‰

AIR TEMPERATURE (°C): 21.3°C WATER TEMPERATURE (°C): 18.7°C

FOREL ULE: XII pH: 8.45

YSI MEASUREMENTS 8.81 mg/l or ppm surface only

BOTTOM TEMPERATURE (°C): 18.3°C SURFACE TEMP. (°C): 18.7°C

BOTTOM SALINITY (ppt): 25 ppt SURFACE SALINITY (ppt): 25 ppt

BOTTOM DISSOLVED OXYGEN (mg/l): 8.3 mg/l SURFACE DISSOLVED OXYGEN (mg/l): 8.81 mg/l

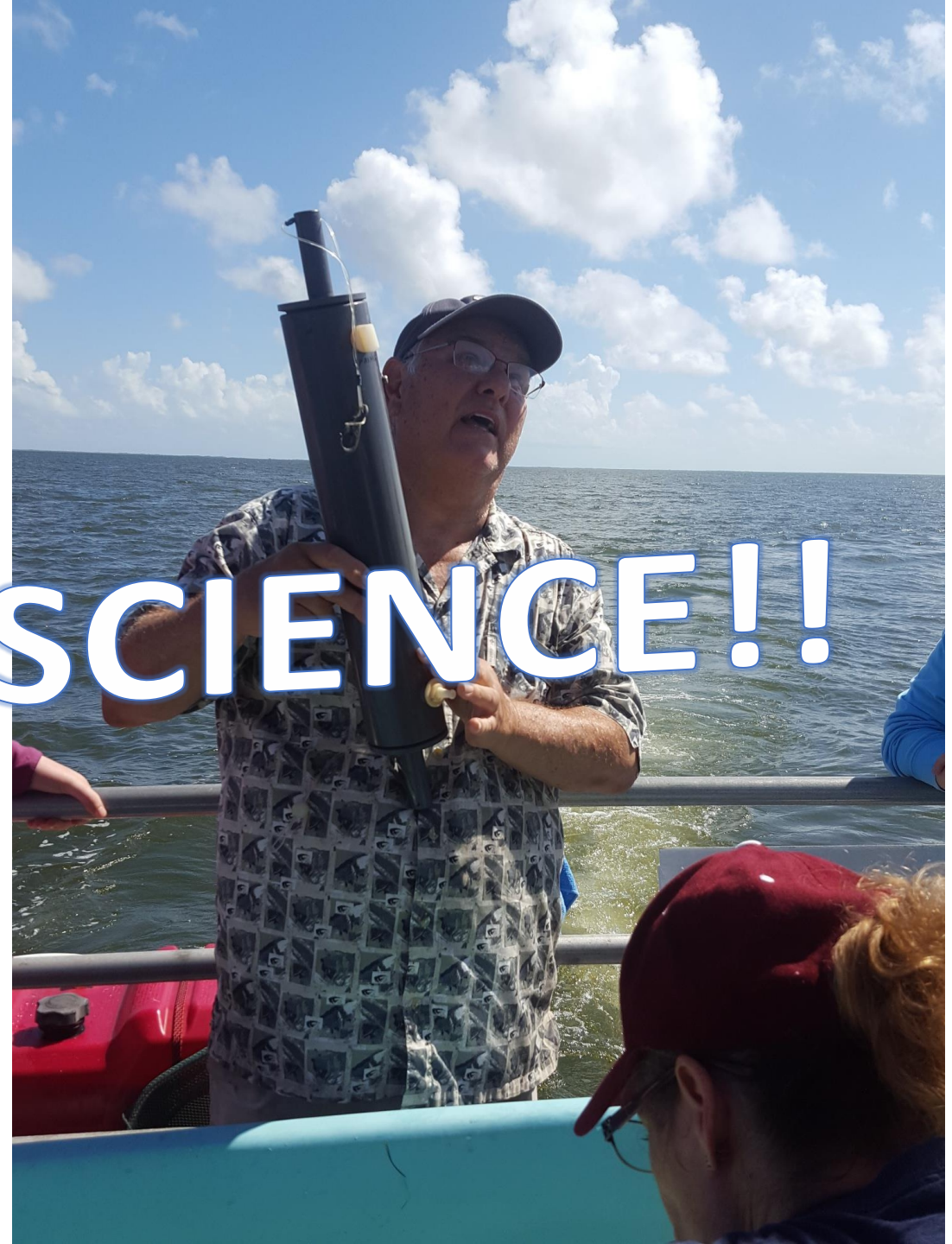
WATER COLLECTION

SPECIES COLLECTED: Atlantic Kingfish, 1/2 Fish

Shrimp, Sponges, Pinfish, Spot, Proker, Stone Crab, manta
whiff, Anchovy, Baby Juvenile, Lookdown, Porcelain Crab

DEBRIS (MAN-MADE OR NATURAL): Water bottle, plastic cup

NOTES:



CITIZEN SCIENCE!!





MORE CITIZEN SCIENCE!!!









SAMSUNG



**Today's
Students are
Tomorrow's
Stewards of
the Bay!**





361-717-4176

Research Vessel

San Antonio Bay Partnership
Estuary Education October is made possible by:
Formosa Environmental Trust
Wood Family Memorial Trust
DOW CAT
Natalie & Richie David Brenda & Doug Berger
Brigid & Allan Berger Pat Robertson
PROSPERITY BANK
www.sabaypartnership.org
Texas Floating Classroom

www.Texas Floating Classroom.com



Take the message up the river!



All drains lead to the ocean, kid.

















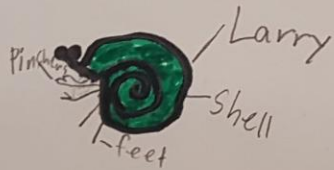


Student's Name Emma Ybarra

Organism name broad hermit crab

Characteristics: cute, lived in a shell, pattern

Drawing (include body parts like : body, head, tail , legs (extremities) , eyes , mouth , tentacles , fur, skin , scales).



Adaptation : Example body shape, tail length , head position , mouth position .

Explain the importance. The skin color helps the organism to hide or blend in the environment .

The shell protects the hermit crab















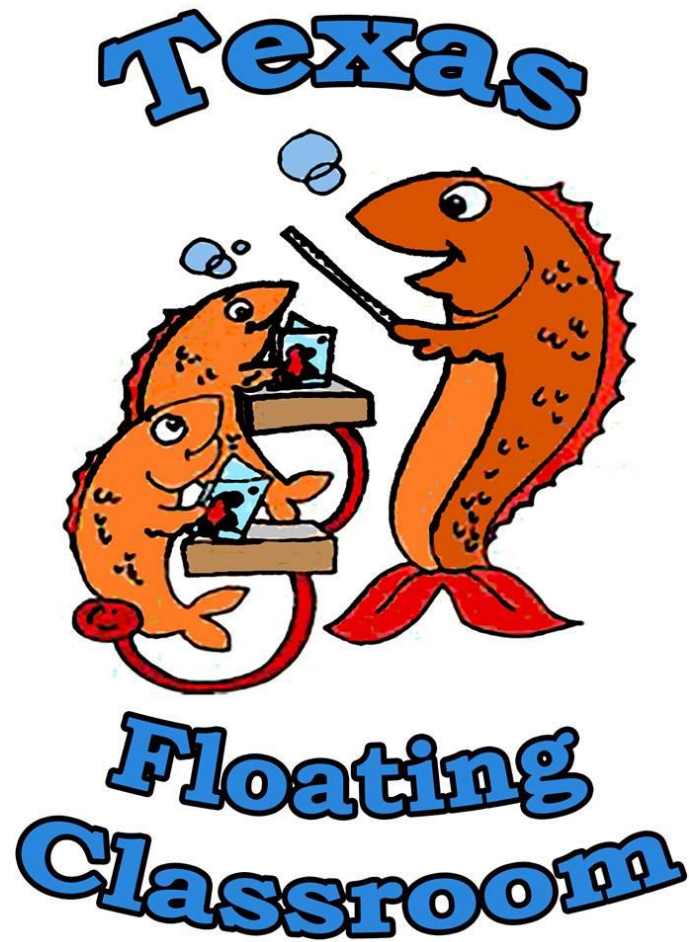
San Antonio Bay Partnership & Texas Floating Classroom **Estuary October 2019**

59 Marine Science Cruises
1356 Participants

111 Touch Tank Classes
2740 Participants

4096 Participants!!





Have you
kissed a fish
today?

Capt. Whitney Curry

TexasFloatingClassroom.com

361-717-4176