

TRANSLATING THE *National Estuary Program Model* TO SAN ANTONIO BAY



The Coastal Bend Bays & Estuaries Program is a non-profit organization dedicated to protecting and restoring bays and estuaries in the twelve counties of the Texas Coastal Bend.

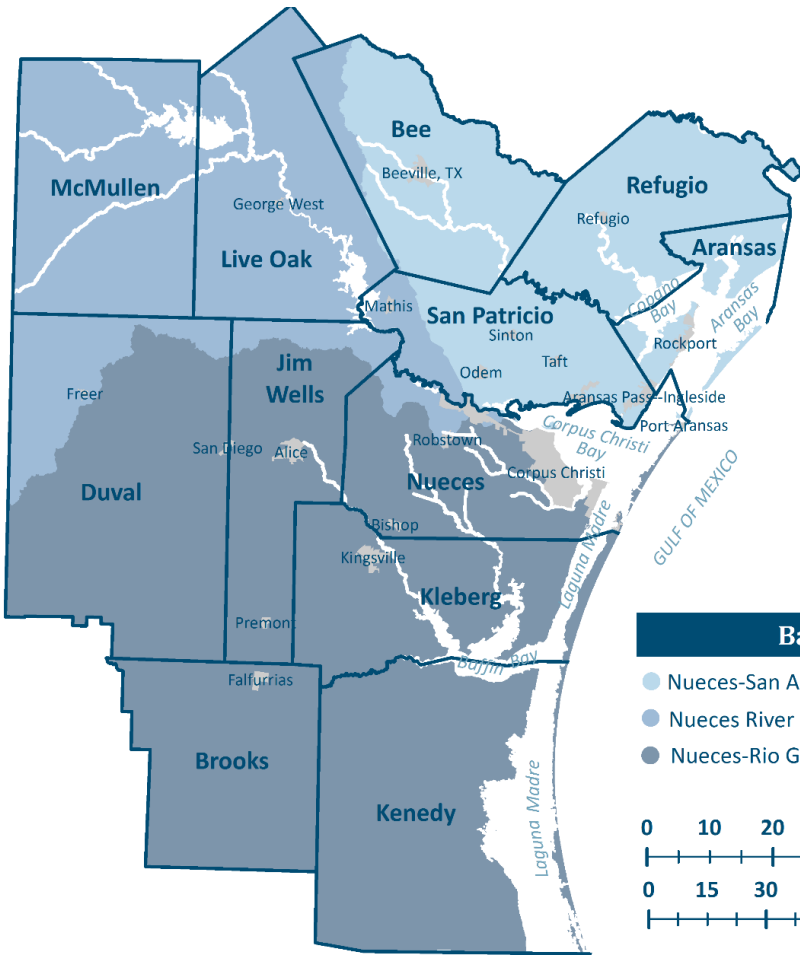
SUPPORT US. [GET INVOLVED](#). [LEARN MORE](#).



www.cbbep.org

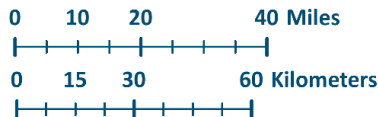
1 OF 28... NATIONAL ESTUARY PROGRAMS





Basins

- Nueces-San Antonio Coastal Basin
- Nueces River Basin
- Nueces-Rio Grande Coastal Basin



What we do



Where we work

CBBEP IS DEDICATED TO PROTECTING AND RESTORING THE HEALTH AND PRODUCTIVITY OF THE BAYS AND ESTUARIES IN THE TEXAS COASTAL BEND, WHILE SUPPORTING CONTINUED ECONOMIC GROWTH AND PUBLIC USE OF THE BAYS.

FISH & WILDLIFE CONSERVATION



PUBLIC ACCESS & RECREATION



HABITAT PROTECTION & RESTORATION



MONITORING & RESEARCH



ENVIRONMENTAL EDUCATION



WATER QUALITY & FRESHWATER INFLOWS

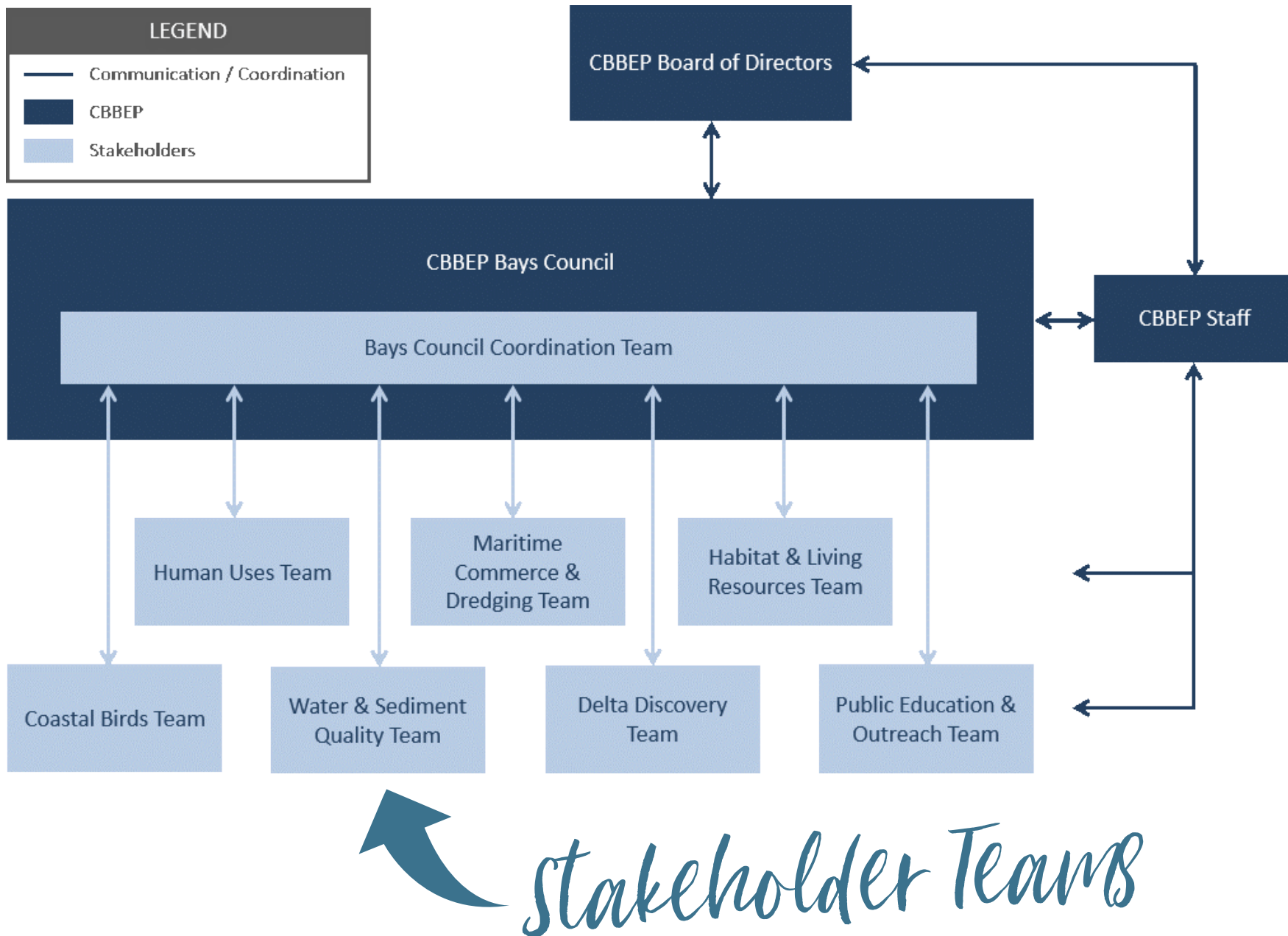


MARITIME COMMERCE & DREDGING



#1
Needs to be
stakeholder
driven





SABP would like to thank the following for...

Allan & Brigid Berger
Anonymous Donor
Ashley Berger
Beacon 44 Seafood - Port O'Connor
Bernice & Anthony Kallina
Caterpillar
Cetera Financial Group
Coastal Bend Bays & Estuaries
Program
Doug & Brenda Berger

AmazonSmile
Aransas National Wildlife Refuge
ASR Systems, LLC
Austwell-Tivoli ISD
Bloomington ISD
Calhoun County
Calhoun County ISD
Calhoun's Riverside Retreat
City of Cuero
City of Seadrift
Coastal Bend Paddlers Club
Cuero Chamber of Commerce
Cuero Development Corporation
Dewitt County
Dolphin Kayaks

Donations and Funding:

Dow Chemical Company
Environmental Protection Agency
ExxonMobil Foundation
First National Bank Port Lavaca
H&H Door Company
Kelsey Berger
Omron Foundation
Pat Robertson
Prosperity Bank
Richard & Melanie Weischwill

SABP Paddlers
San Antonio River Authority
South Star Wealth Management
Texas State Aquarium
Texas Water Development Board
The Eads Foundation
Trull Foundation
US Fish and Wildlife Service
Vickie Grove & David Ryan
Wood Family Memorial Trust

In-Kind Support and Partnering:

Dolphin Talk
Friends of Port O'Connor Library
Gerry's Kayaks
Guadalupe-Blanco River Authority
Hawk Watch International
International Crane Foundation
Mad Island Marsh Preserve
Matagorda ISD
Mid-Coast Texas Master Naturalists
Museum of the Coastal Bend
Northside Baptist School
Palacios ISD
Port Lavaca Wave
San Antonio Bay Foundation
Smithsonian Migratory Bird Center

St Joseph High School
Texas Floating Classroom
Texas Ornithological Society
Texas Zoo
Tidehaven ISD
Tom & Kathy Leiden
TPWD - Coastal Fisheries
Trungale Engineering & Science
Van Vleck ISD
Victoria Advocate
Victoria College - Academy of Life
Long Learners
Victoria Preservation, Inc.
Welder Wildlife Foundation
West Side Calhoun County
Navigation District

HABITAT CONSERVATION AND COASTAL PUBLIC ACCESS PLAN FOR THE SAN ANTONIO BAY SYSTEM

PREPARED BY:

San Antonio Bay Partnership

CONTRIBUTING AUTHORS:

The Center for Coastal Studies at Texas A&M University-Corpus Christi
International Crane Foundation

IN COOPERATION WITH:

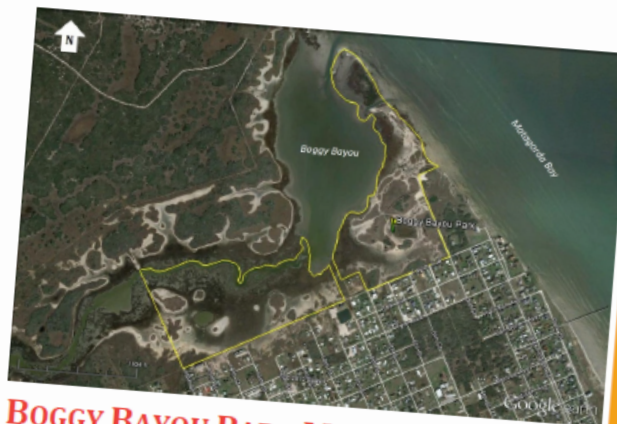
Coastal Bend Bays & Estuaries Program

FUNDING PROVIDED BY:

Texas General Land Office, Coastal Management Program, Cycle 16

January 2014

San Antonio Bay Partnership
405 W POWER AVE, VICTORIA, TEXAS 77901 | www.sabaypartnership.org



BOGGY BAYOU PARK MASTER PLAN FOR ENHANCEMENT

PUBLIC ACCESS CATEGORY: PARK
NUMBER: 1

Current Status:

Boggy Bayou Park is located at the northern end of 3rd Street in Port O'Connor. Current infrastructure in the Park includes a wooden boardwalk with observation platforms. A sand road is used by vehicles to access the south bayou shoreline for kayak launching and wade fishing, but roads are undesignated and off-road vehicles frequently use these areas inappropriately. In addition, roads are often inundated and impassable after heavy rains and high tides. Other issues at the Park include shoreline erosion, illegal dumping, and inappropriate vehicle use.

Project Description:

Boggy Bayou Park has the potential to provide Port O'Connor residents and visitors with numerous high-quality recreational opportunities, but the Park is currently primitive and underutilized. Development of a master plan that outlines potential projects for enhancing the Park would be of great benefit to the County and other local partners. The plan should incorporate public input and include estimated project costs.

Project ideas for enhancing the Park include: (1) shoreline restoration, (2) improved roads and drainage, (3) installation of cabanas and picnic tables, (4) installation of restroom facilities, (6) closure of some areas to vehicle traffic, (7) security plan, (8) extension of the boardwalk to shoreline, (9) development of a short kayak trail, (10) development of a walking trail, (11) construction of salt marsh education facility, and (12) potential purchase of nearby property that could expand the Park and provide higher ground for installation of additional amenities.

Owner:
Calhoun County

Key Partners:

- Calhoun County
- Port O'Connor Chamber of Commerce

Other Partners:

- Texas Parks and Wildlife Department
- Texas General Land Office
- Texas Sea Grant Calhoun County Extension Agent
- Local foundations
- Private Landowners

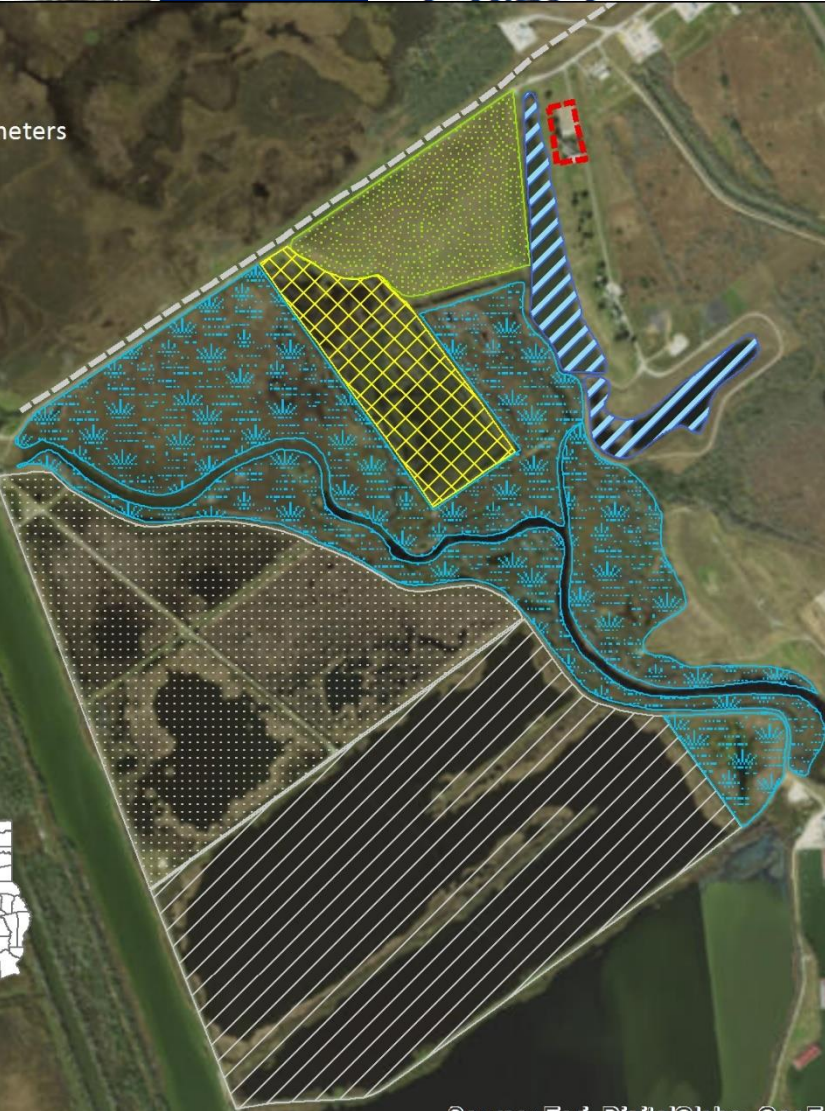
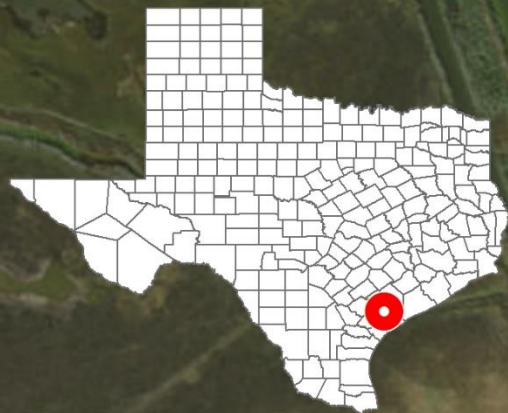
Estimated Cost:

- Master Plan = Moderate
- Additional Amenities = Moderate
- Land acquisition = High

Priority:
Medium

Complexity:
Medium

0 0.125 0.25 0.5 Miles
0 0.25 0.5 1 Kilometers



LEGEND

- Carbide Waterbird Colony
- Duck Pond/Clubhouse Pond
- Capped Landfill
- Wetlands
- Secondary/Tertiary Treatment Ponds
- Treatment Wetlands
- Dow Clubhouse
- Cooling Water Return Ditch

Source: Esri, DigitalGlobe, GeoEye, Earthstar Geographics, CNES/Airbus DS, USDA, USGS, AeroGRID, IGN, and the GIS User Community

shoreline protection

See Figure 5

Aransas National Wildlife Refuge



ANWR SHORELINE EROSION

SITE NUMBER: 24

Latitude/Longitude:
28°16'22.62" N, 96°47'52.79" W

Habitat Type:

Listed as E2USN on the 2008-2009 National Wetland Inventory, an estuarine and marine wetland, and designated as sandbars/flats habitat for this project.

Conservation Strategy:

Restore eroded shoreline and develop plan to maintain shoreline.



DATABASE INFORMATION

Nominated:
Phase I

Land Ownership
Aransas National Wildlife
Refuge – U.S. Fish and
Wildlife Service

Potential Partners
U.S. Fish and Wildlife
Service

Species
Oak Trees

Key Terms:

- Management
- Restoration
- Monitoring
- Hydrology
- Sandbars/Flats
- Uplands

#2 Good science leads to better management





SAN ANTONIO BAY

STATUS AND TRENDS REPORTS

REPORT 1: Water Quality, Benthic Macrofauna, and Epibenthic Fauna
REPORT 2: Marine Resources
REPORT 3: Colonial Nesting Waterbirds
REPORT 4: Whooping Crane
REPORT 5: Upland Birds
REPORT 6: Attwater's Prairie Chicken
REPORT 7: Aplomado Falcon

MARCH 2014

Water quality
Benthic Macrofauna
Epibenthic Fauna
Marine Resources
Colonial Waterbirds
Whooping Cranes
Upland Birds
Attwater's Prairie Chicken
Aplomado Falcon



#3
Must leverage
resources

Water for Wildlife

MOULTRE



77°F



12/14/2014 04:20PM DRYHOLE1CAM

#4

Community
engagement
is key to success





Floating Classroom

Becoming a National Estuary Program . . .

- ✓ Needs to be stakeholder driven
- ✓ Good science leads to better management
- ✓ Must leverage resources
- ✓ Community engagement is key to success

Thank you!



The Coastal Bend Bays & Estuaries Program is a non-profit organization dedicated to protecting and restoring bays and estuaries in the twelve counties of the Texas Coastal Bend.

SUPPORT US. [GET INVOLVED](#). [LEARN MORE](#).



www.cbbep.org

Habitat *and* Wildlife

Habitat restoration

Invasive species control

Fisheries

Algal blooms



Water Quality *and* Freshwater Inflows

Water quality planning
Nonpoint source pollution
Stormwater runoff
Bay debris
Monitoring





Land Conservation

Acquisition/Easements
Prescribed burns
Restoration
Access control

A hand holding a fishing rod against a sunset background. The sun is low on the horizon, creating a golden glow and a reflection on the water. The fishing rod is silver and black, with a reel. The background is a body of water with ripples.

Public Access *and* **Nature Tourism**

Boat ramps
Trails and boardwalks
Educational signs
Access control

Environmental Education



Field Trips
Teacher Workshops
Community Programs

Coastal Bird Program

Habitat management
Research & monitoring
Education & outreach

