

Dedicating Return Flows to the Bay

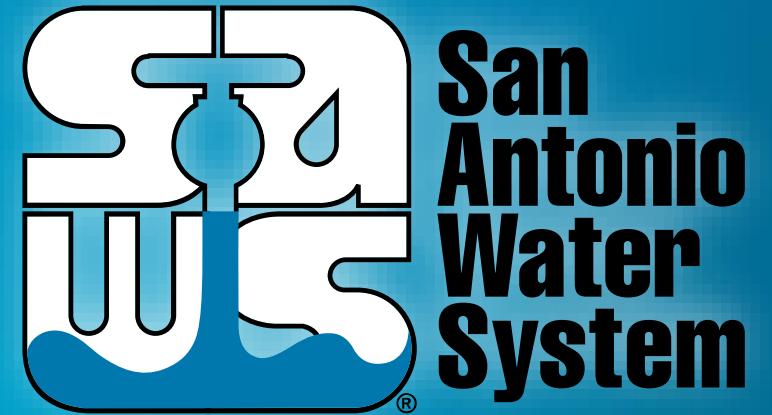
Gregg Eckhardt

Senior Analyst, Production and Treatment Operations



10th Anniversary Conference

January 23, 2020



MAKING SAN ANTONIO
WATERFUL



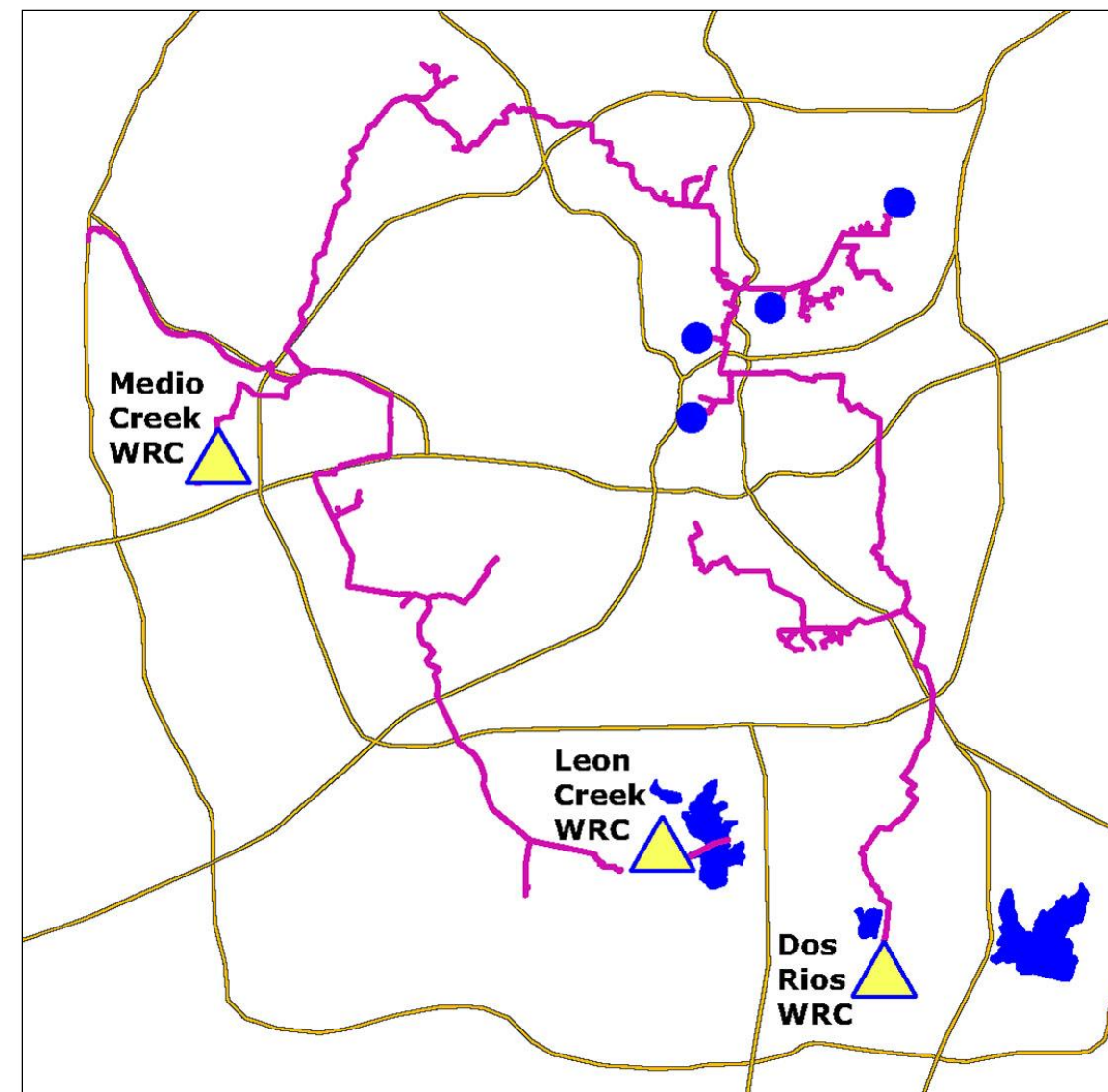
Discharge to Medina River



Bed and Banks Basics

- An authorization from the State of Texas to use the “Bed and Banks” of a river as a natural pipeline to transport privately developed groundwater
- Without a bed and banks authorization, discharges become property of the State
- SAWS seeks to dedicate 50,000 af/yr for benefit of San Antonio River and San Antonio Bay

SAWS' Recycled Water System



Dedicating Return Flows to the Bay

A large, rectangular white sign with a thin black border is mounted on a red brick wall. The sign features the text "Trinity University" in a large, bold, black serif font, and "Founded 1869" in a smaller, black serif font below it. The brick wall is made of reddish-brown bricks. In front of the wall, there are several bushes with red flowers and some smaller plants. The ground in front of the wall is covered with green grass. In the background, there are bare trees and a cloudy sky.

Trinity University

Founded 1869

Recycled Water Users



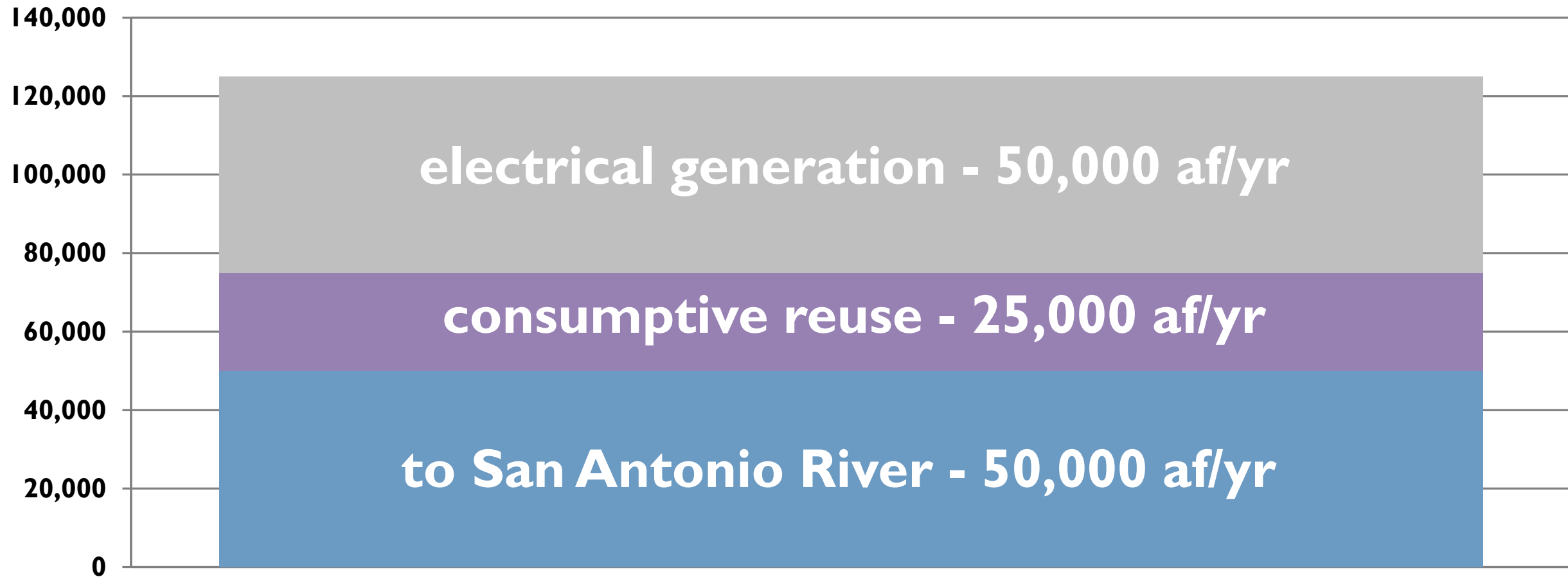
Flow to SA River

Electrical Power Generation



Effluent Allocation

acre-feet



Dedicating Return Flows to the Bay



Conquista Crossing

Legislative Programs

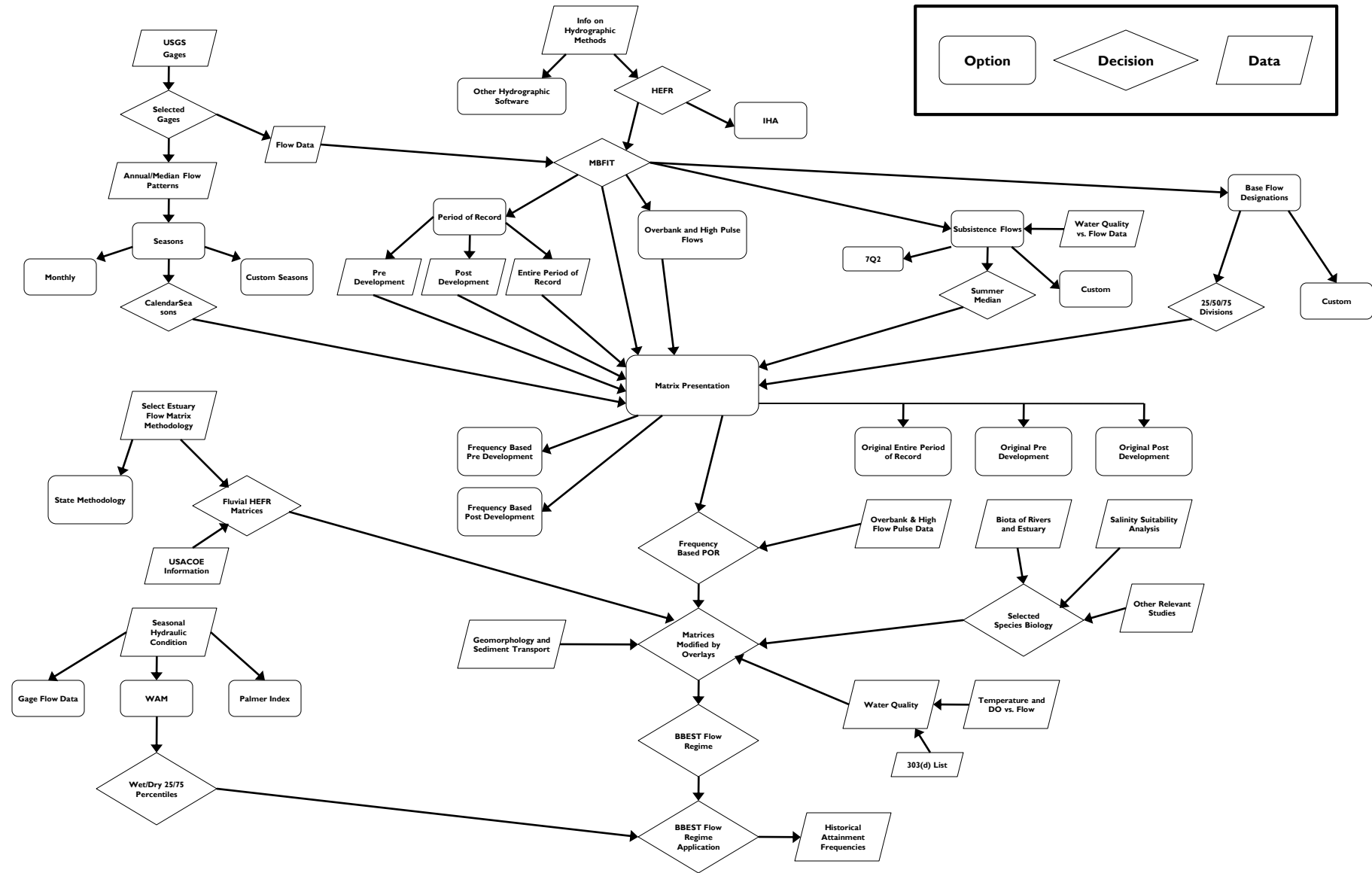
To address flows in San Antonio and Guadalupe River basins:

- 2001 - Senate Bill 2 Texas Instream Flows Program
- 2007 - Senate Bill 3 Environmental Flows Program



Dedicating Return Flows to the Bay

E-Flows Science Team Decision Diagram



SB3 Stakeholder Work Plan

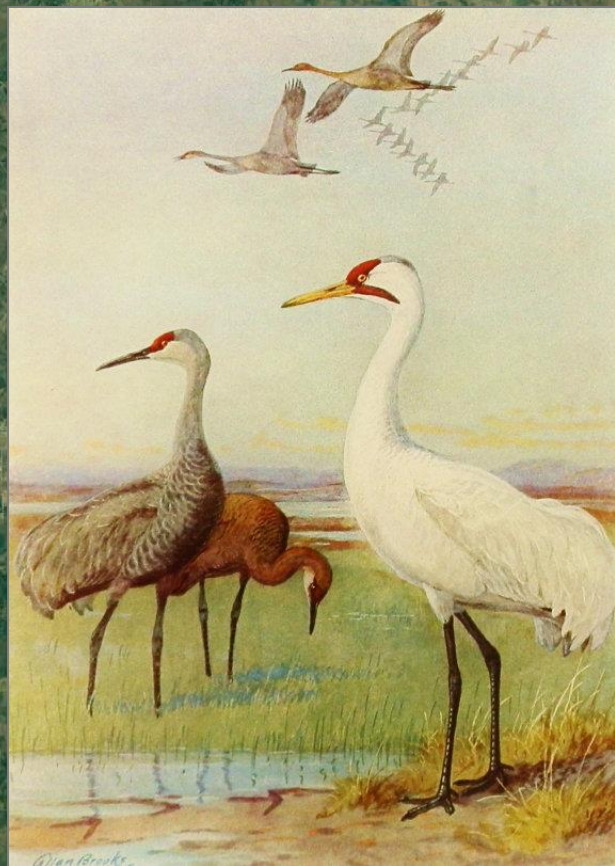
- Outlines *voluntary* strategies to meet instream flow standards

Guadalupe, San Antonio, Mission,
and Aransas Rivers and Mission,
Copano, Aransas, and
San Antonio Bays Basin and Bay Area
Stakeholders Committee

Work Plan for Adaptive Management



Dedicating Return Flows to the Bay

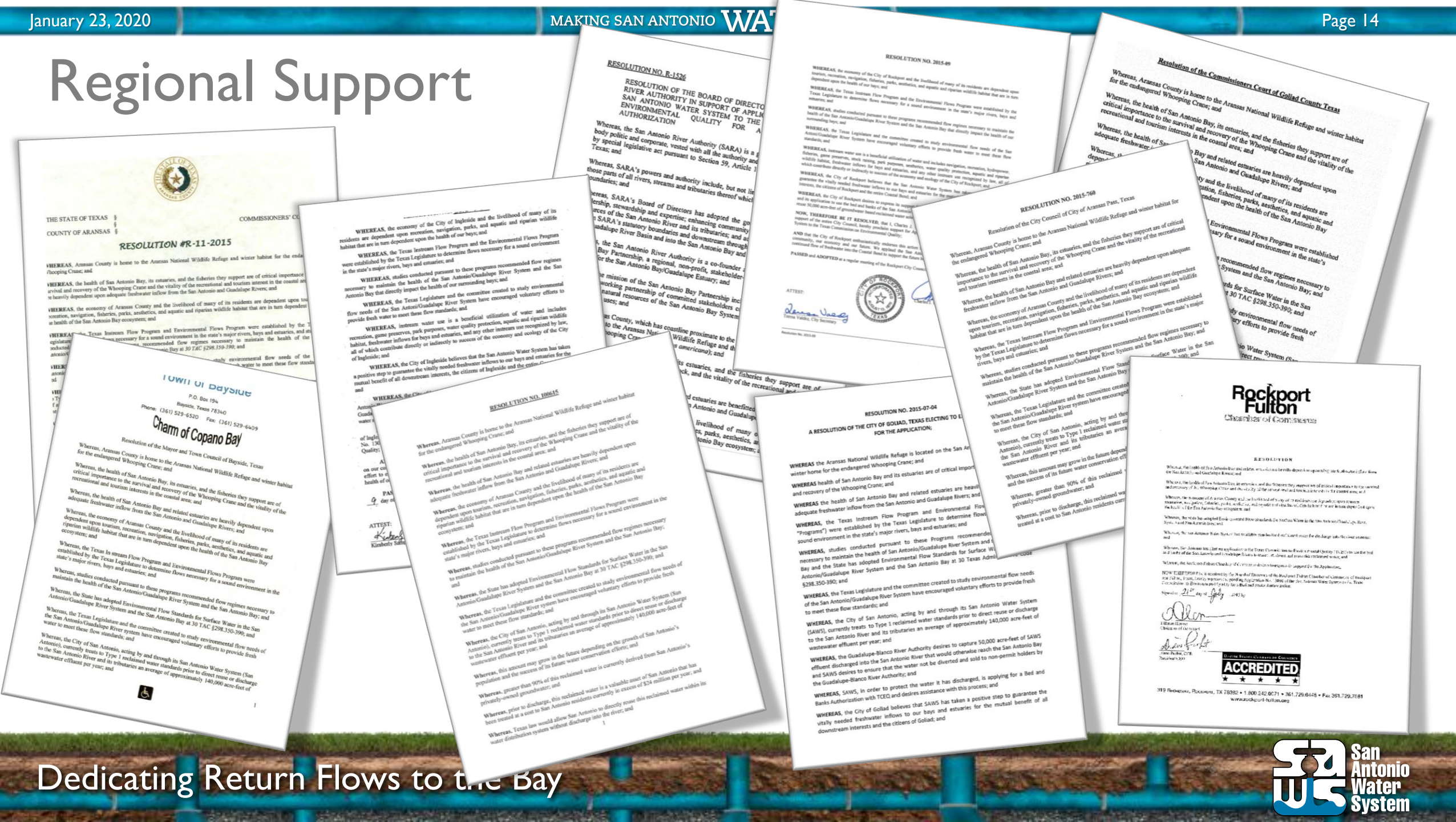


National Geographic Magazine, 1937

Aransas
National
Wildlife
Refuge

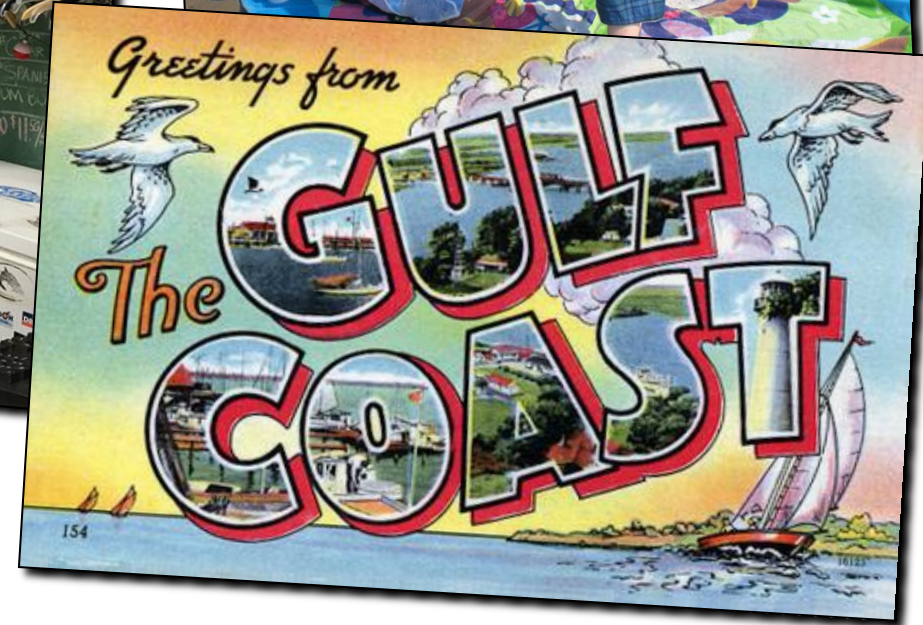
San
Antonio
Bay

Regional Support



Dedicating Return Flows to the Bay

Regional Benefits



Dedicating Return Flows to the Bay

Swan Lake Ranch



Dedicating Return Flows to the Bay

TCEQ Process

- Staff review of application
- Declared administratively complete
- Public notice
- Opportunity for protest
- Executive Director makes recommendation
- Possible contested case hearing
- Commission decision
- Possible judicial review

Dedicating Return Flows to the Bay

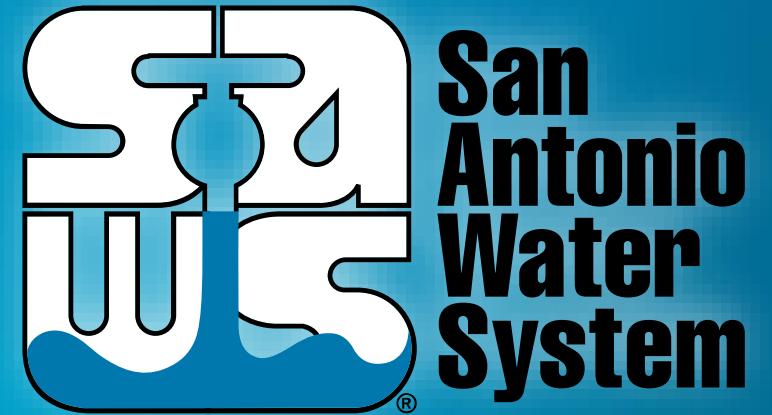
Gregg Eckhardt

Senior Analyst, Production and Treatment Operations



10th Anniversary Conference

January 23, 2020



MAKING SAN ANTONIO
WATERFUL



Bed and Banks Goals

- Add legal certainty to policy guidance
- Support SB 3 stakeholder strategies to ensure healthy rivers, bays, and estuaries
 - Authorization to use 50,000 acre-feet per year solely for instream flow
- Ensure San Antonio retains ownership and control of all current and future groundwater based discharges
 - Authorization to use remainder for any legal purpose (in the future)