

Providing Water for Wildlife and Resiliency Before the Next Drought



Joe Saenz

Aransas National Wildlife Refuge

Elizabeth H Smith

International Crane Foundation

James Dodson

San Antonio Bay Partnership

Whooping Crane Use of Freshwater Ponds During Drought Conditions





All Wildlife Need Fresh Water

White-
tailed Deer



All Wildlife Need Fresh Water



Waterfowl

All Wildlife Need Fresh Water



Bald Eagle

All Wildlife Need Fresh Water



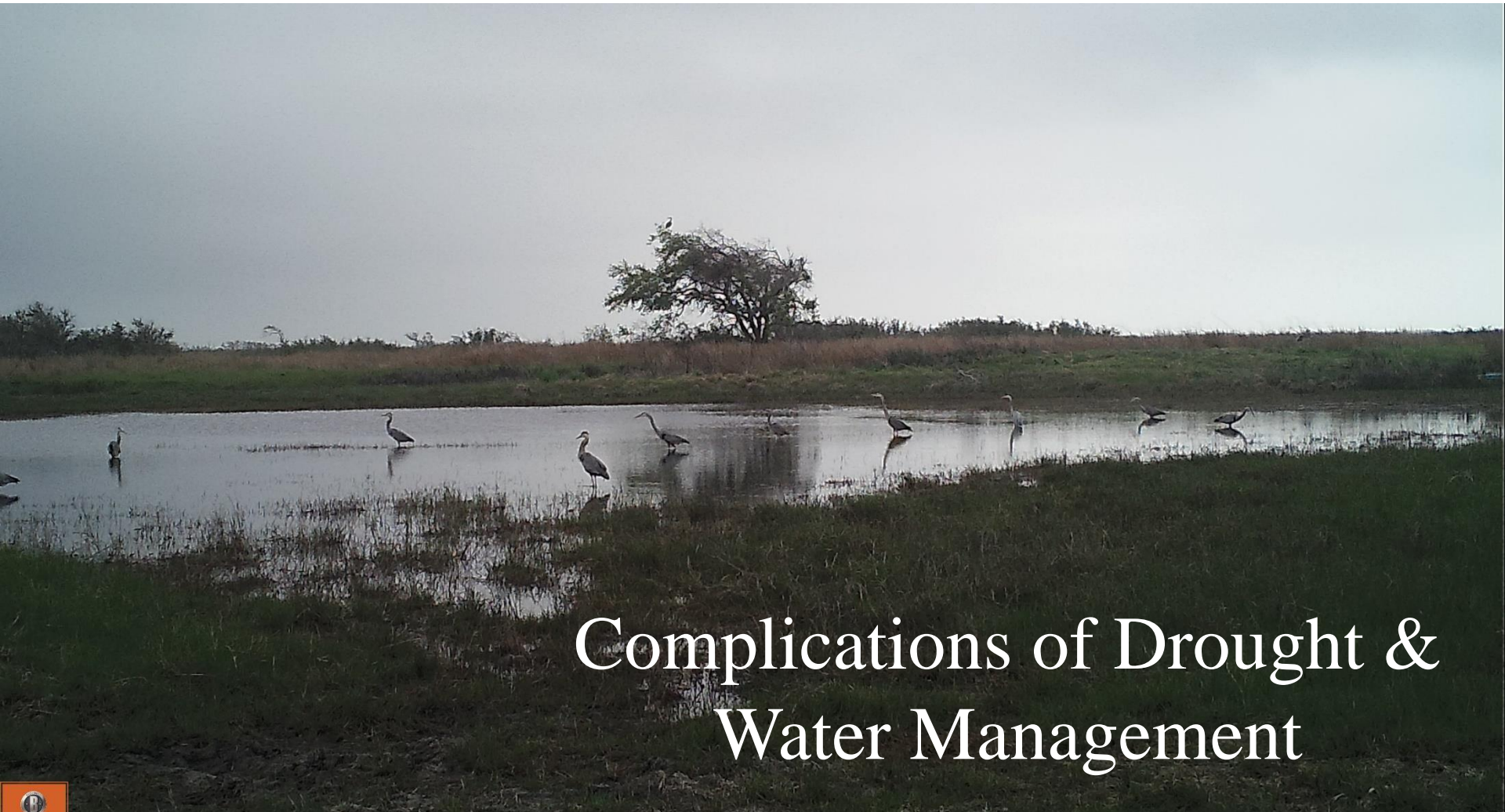
Smaller Alligator

Large Alligator

Windmills Provide Water for Whooping Cranes & Wildlife



Windmills Provide Water for Whooping Cranes & Wildlife



Complications of Drought &
Water Management

Complications of Drought

U.S. Drought Monitor

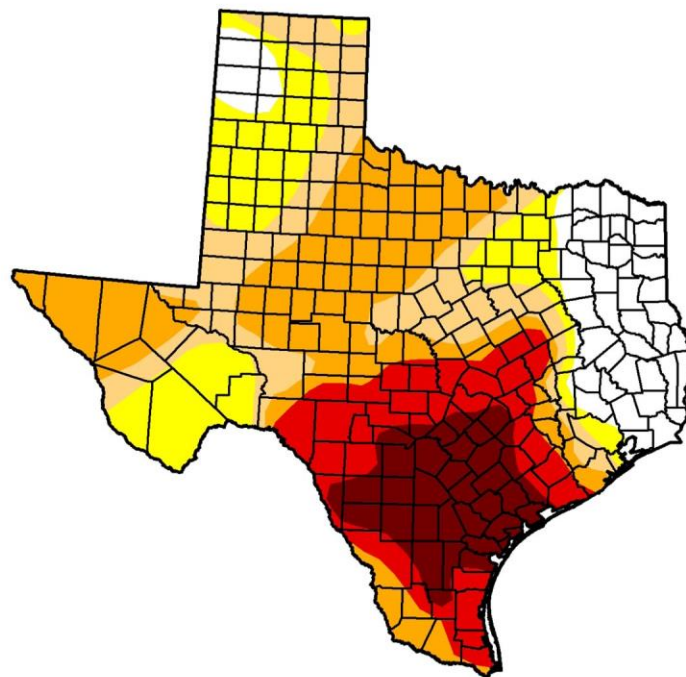
Texas

April 14, 2009

Valid 7 a.m. EST

	Drought Conditions (Percent Area)					
	None	D0-D4	D1-D4	D2-D4	D3-D4	D4
Current	14.9	85.1	68.2	50.6	25.1	11.5
Last Week (04/07/2009 map)	6.7	93.3	79.1	53.5	24.6	7.1
3 Months Ago (01/20/2009 map)	26.9	73.1	45.8	22.2	16.0	4.2
Start of Calendar Year (01/06/2009 map)	41.7	58.3	24.5	15.0	9.1	4.2
Start of Water Year (10/07/2008 map)	67.2	32.8	20.5	11.0	3.6	0.0
One Year Ago (04/15/2008 map)	36.2	63.8	45.0	18.4	10.5	3.3

Intensity:



The Drought Monitor focuses on broad-scale conditions. Local conditions may vary. See accompanying text summary for forecast statements.

<http://drought.unl.edu/dm>



Released Thursday, April 16, 2009
Author: Richard Heim, NOAA/NESDIS/NCDC

Complications of Drought

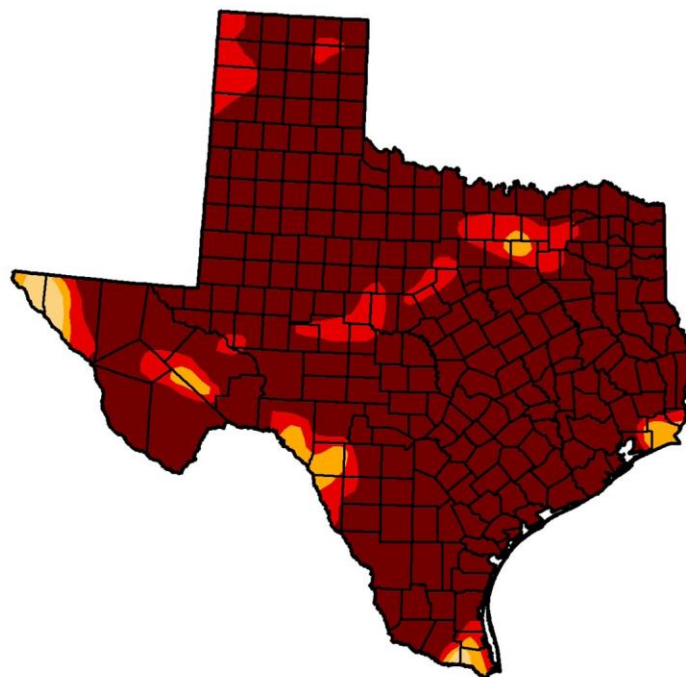
U.S. Drought Monitor

Texas

September 13, 2011

Valid 7 a.m. EST

	Drought Conditions (Percent Area)					
	None	D0-D4	D1-D4	D2-D4	D3-D4	D4
Current	0.00	100.00	100.00	99.17	96.75	87.83
Last Week (09/06/2011 map)	0.00	100.00	99.93	99.01	95.68	81.06
3 Months Ago (06/14/2011 map)	1.97	98.03	96.53	94.77	88.57	64.78
Start of Calendar Year (12/28/2010 map)	7.89	92.11	69.43	37.46	9.59	0.00
Start of Water Year (09/28/2010 map)	75.57	24.43	2.43	0.99	0.00	0.00
One Year Ago (09/07/2010 map)	69.60	30.40	5.25	1.51	0.00	0.00



Intensity:



The Drought Monitor focuses on broad-scale conditions. Local conditions may vary. See accompanying text summary for forecast statements.

<http://drought.unl.edu/dm>



Released Thursday, September 15, 2011

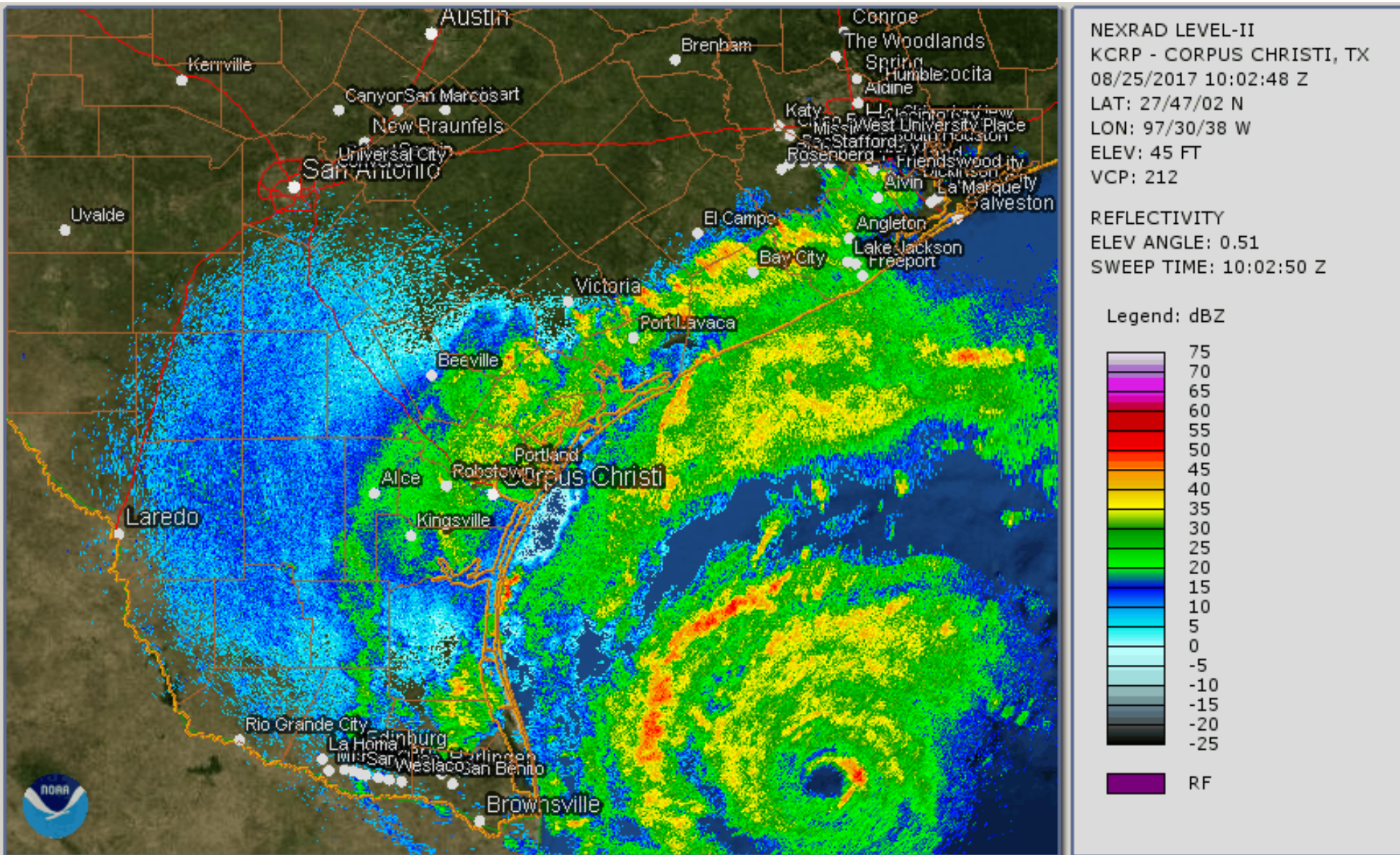
Mark Svoboda, NDMC

Waters for Wildlife Funding Provided By

- Friends of ANWR, San Antonio Bay Foundation
- Texas State Aquarium Research Grant Program
- Coastal Bend Bays & Estuaries Program
- National Fish and Wildlife Foundation
 - Aransas National Wildlife Refuge
 - San Antonio Bay Partnership
 - International Crane Foundation
- US Fish and Wildlife Service, Private Lands Program
 - International Crane Foundation

Complications of Hurricanes & Water Management

Hurricane Harvey August 25, 2017

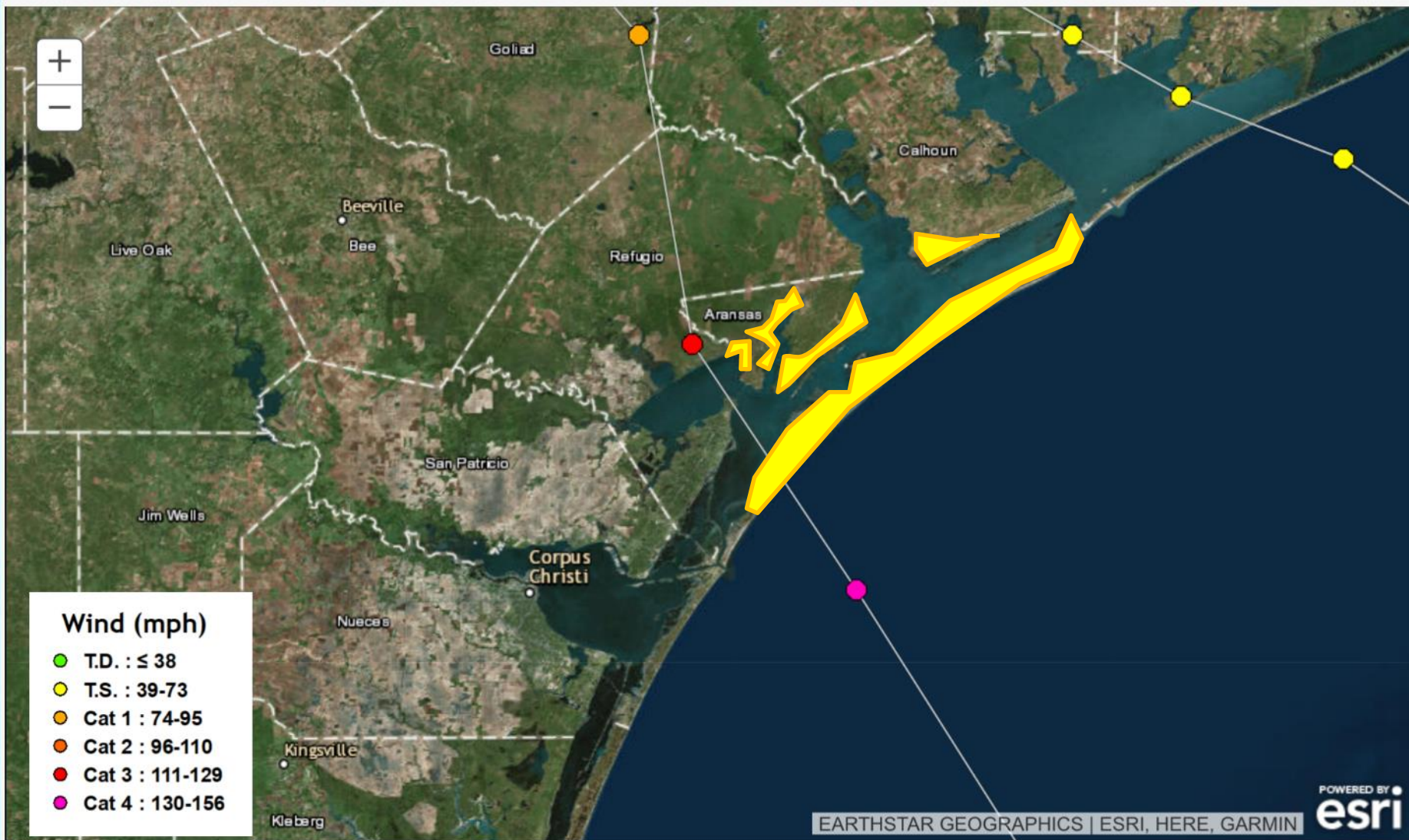


Category 4 Hurricane Harvey: South Texas Landfall & Impacts from August 25th to 29th, 2017

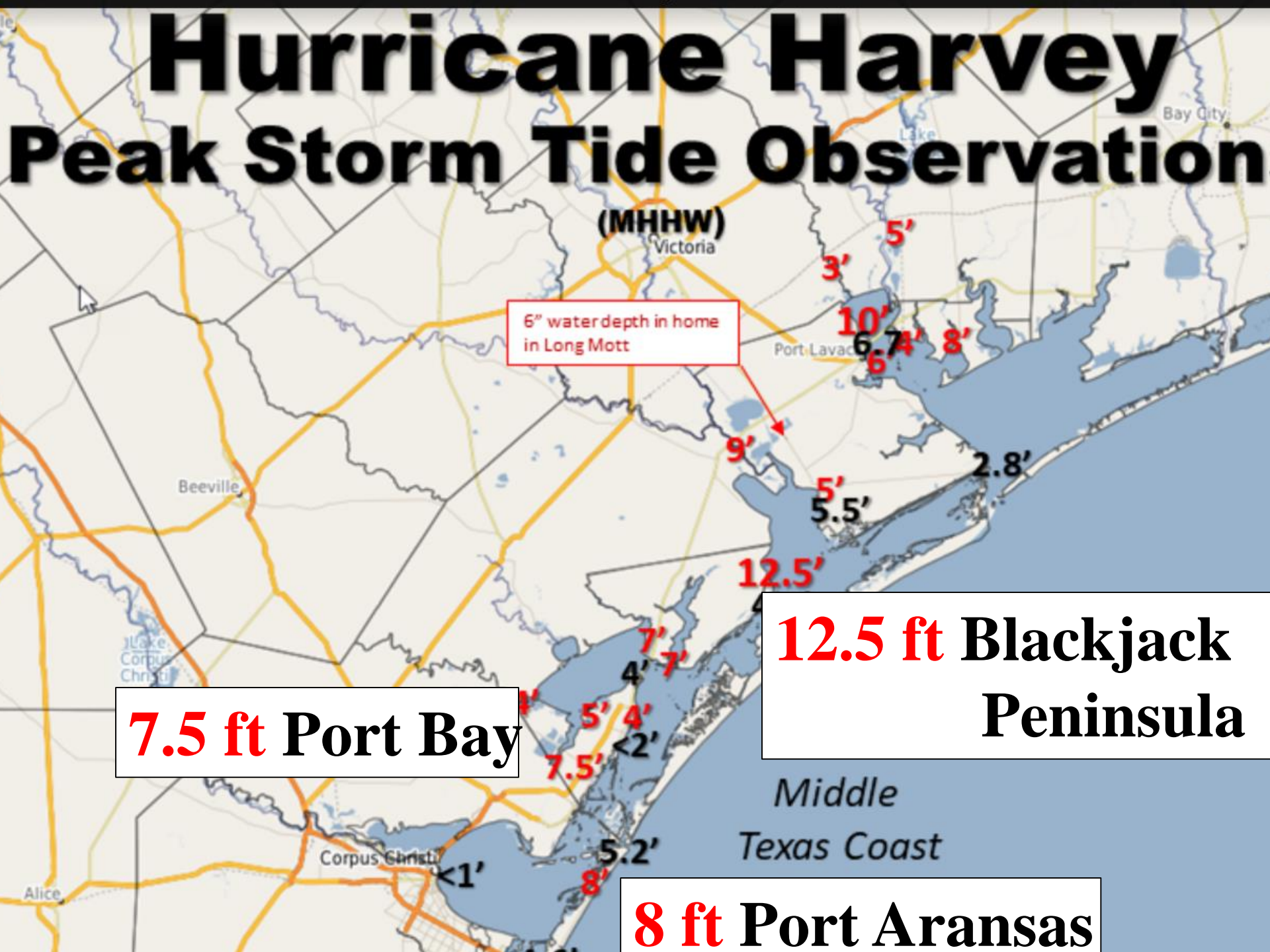
[Overview](#) [Harvey Stats](#) [Radar](#) [Satellite](#) [Winds](#) [Storm Surge](#) [Rainfall](#) [Rivers](#) [Seadrift Tornado](#) [Storm Reports](#) [Photos](#)

...Hurricane Harvey is the first Major Hurricane to strike South Texas since Celia in 1970...

...Hurricane Harvey is the first Hurricane to strike the Texas Coast since Ike in 2008...



NHC Preliminary Best Track of Harvey (Click points above to view additional information.)



Coastal Marshes Post-Harvey: Good Condition



Potential Impacts to Whooping Cranes & Wildlife: Fresh Water



Day Before the Hurricane



Dry Hole E

98° F

08 – 24 – 2017 12:10

Hurricane Winds Approaching Afternoon



Dry Hole E

73° F

08 – 25 – 2017 18:50