

*POC Shorelines
Cleanup
September 12, 2020*

San Antonio Bay

Partnership

San Antonio Bay- Guadalupe Estuary

September 8, 2020 v5.0

[REGISTER FOR THE SHORELINE CLEAN UP](#)

Sponsored by:



Helping Here.



Thank You!

Introduction

Plastic pollution in the marine environment is a problem. The Texas GLO sponsors beach cleanups at various shoreline locations along the Texas Coast to address the issue. The largest effort in the State may be the Padre Island National Seashore where volunteers mobilize to cleanup miles of Padre Island Gulf shores.

The San Antonio Bay – Guadalupe Estuary system is of national significance given that it is the winter home of the endangered Whooping crane. While a relatively undeveloped segment of the Texas Coast, it too is subject to plastic pollution. There are several annual beach cleanups occurring on frequently used beaches within the bay systems in Calhoun County, but nothing is being done to address the problems along remote bay shorelines and beaches. It is time to start!

This plan initiates a bay cleanup effort, focused initially on shorelines near Port O' Connor. Volunteers and boats are needed for a systematic and comprehensive approach to cleaning those shorelines. All these shorelines are accessible only by boat.



Objectives: The objectives of the bay cleanup are to :

1. Remove plastic trash from bay shorelines.
2. Improve the understanding of the effort and logistics required to remove it.
3. Engage the public in making a difference in protecting the Bays, and
4. To quantify the amount of common debris items so that we may discuss solutions for improvement and engage stakeholders, contributors, and the general public to take action.

Timeline

Assignments – by email no later than Thursday Sept 10

Pickup up Supplies:

- 5-8pm, Friday, Sept 11 – Allan’s house, 604 2nd St, POC
- 7:30am-8:30am , Saturday Sept 12
 - by vehicle: TPWD Dock gate, 418 S 16th St, POC
 - by boat from TPWD Dock on ICWW, POC

Cleanup, Saturday Sept 12; 8am – noon

- Unload from boat at TPWD dock.
- Turn in data sheets at Dock

Lunch and Refreshments: Noon – 2pm

- **Hurricane Junction**– 1502 W Maple Street, POC
 - Outdoor venue
 - Sufficient space for social distancing
 - Menu TDB plus 2 drinks provide by Sponsors

Friendly Competition – Awards for: most bags; most beverage bottles; most unique trash

Operational Plan

We will conduct a volunteer driven cleanup of over 50 miles of shorelines near Port O'Connor on September 12, 2020 removing what is anticipated to be mostly consumer plastics by foot, kayak, or boat, as appropriate for the shoreline.

To quantify our pollution problem and the results of the effort volunteers are asked to enter items collected on a data sheet for later manual compilation and entry into **NOAA's Marine Debris Tracker app**. SABP has its own designated project within the app that we will use for the shorelines clean up. We tested use of the App on a smart phone while on the water but found it problematic. We have opted instead for the manual approach for now and will consider future use of the app if improvements are forthcoming. If you are have an interest in tinkering and providing us additional feedback on the app, background info can be found at <https://marinedebris.noaa.gov/partnerships/marine-debris-tracker>.



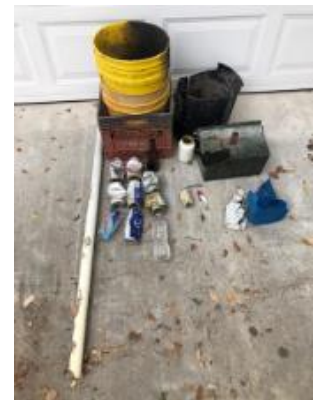
Download the Marine Debris Tracker app through your app store. Watch the quick & easy training video. <http://marinedebris.engr.uga.edu/tracking/>

Look for the San Antonio Bay Partnership project at the bottom of the list of projects in the app.

Data to be collected includes the following preventable pollution priorities:



Section	Items
Most Common	Plastic drink bottles Drinking cups Jugs or containers Aluminum cans
Fishing	Fishing lines, lures, corks, weights Fishing gear Crab traps (from shore only) Crab trap float only
Hunting	Shotgun shells Duck decoys
Misc.	Plastic bags Balloons Buckets
Other	Other* Unusual Item*



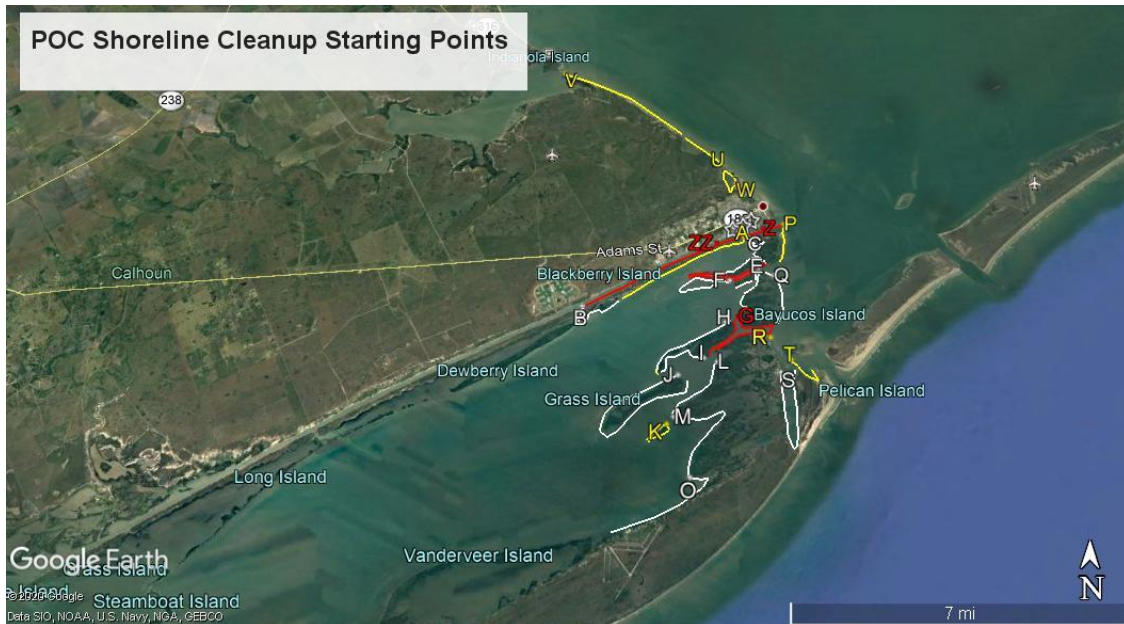
Call Brigid Berger for app questions (713-825-1929)

The following data will be collected manually:

- # plastic beverage bottles
- # of garbage bags filled & itemization of collected items as practical
- Optional: rest of manual data sheet
- effort involved (volunteer hours, boats, estimated shoreline mileage cleaned)

Team Competition – Prizes awarded for most bags collected, most plastic beverage bottles, & most unique trash.

Scope POC Shoreline Cleanup



Shoreline Legend: White – Kayable; Yellow-Walkable; Red-Boatable

Shoreline Characterization

The POC shorelines shown include over 50 miles of bay and islands that are subject to the accumulation of plastic pollution. None of the shorelines are accessible by land—boat access is required. Excluded in this figure are additional shorelines in marsh complexes.

The targeted pollution includes bottles, cans, buckets, smaller containers that can be safely handled. All trash collected would be taken back to the shuttle boat and be transported to the staging site on the mainland.



The shorelines have been preliminarily characterized for a cleanup method as follows:

Walkable Shorelines (shown on map in yellow) - volunteers would be taken to the shorelines where the cleanup could be conducted by walking on the shoreline. Getting feet wet and occasional wading will be required. Most of these segments have higher shell or sand beaches.

Kayable Shorelines (white) – volunteers and kayaks would be taken by boat to the shorelines that are not walkable, either due to muddy bottoms, mangrove lined shorelines, or that have shallow beaches that prevent getting the boat close. Getting out of the kayak will be required to pick up trash, and there will be spots where wading and pulling the kayak will be appropriate.

Boatable Shorelines (red) - Some of the shorelines have deeper water close to the shore allowing the volunteer to disembark to retrieve the trash and return to the boat.

Starting Points:

POC Bays Shoreline Cleanup		Method	Starting Point	<u>Miles - Walkable</u>	<u>Miles- Kayakable</u>	<u>Miles- Boatable</u>
Espiritu Santo Bay						
A	Blackberry Island East	Walk	Fisherman Cut	3.6		
B	Blackberry Island West	Kayak	Army Cut		1.6	
C	Barroom	Kayak	Fisherman Cut		2.8	
D	Big Bayou	Boat	Little Mary's			3.6
E	Chris' South Shore	Boat	Big Bayou			1.1
EE	Chris' North Shore	Kayak	Chris' N		0.5	
EEE	Chris' South Cove	Kayak	Chris' S		0.8	
F	Bill Day Reef	Kayak	Big Bayou		2.3	
G	Saluria	Boat	Mitchells			4.1
H	Tellers	Kayak	Mitchells		2.3	
I	Bayucos South Shore	Kayak	W Saluria		1.5	
J	Grass Island	Kayak	NE End		5.1	
K	Farwell Island	Walk	Farwell	1.3		
L	Whitakers Shore	Kayak	W Oil Well Cut		1.8	
M	Big Pocket Shore	Kayak	W Tip		3.0	
O	Lighthouse Cove	Kayak	W Tip		2.9	
Matagorda Bay						
P	Little Jetty Shore	Walk	South Jetty	1.1		
Q	E Bayucos	Kayak	Big Bayou		1.6	
R	Coast Guard Shore	Walk	Saluria	0.9		
S	Sunday Cove	Kayak	Old Coast Guard Sta.		3.8	
SS	Sunday Cove	Kayak+Boat	J-Hook			
T	Pass Cavallo	Walk	J-Hook	1.1		
U	Broad Bayou	Walk	N of Boggy Cut	1.2		
V	Powderhorn East Shore	Walk	N of 2nd Boggy	3.6		
W	Boggy Bayou	Kayak	Bayou/ Park Shore			
Z	Intracoastal Waterway East	Boat	Little Jetties			0.9
ZZ	Intracoastal Waterway West	Boat	Fisherman Cut South			4.2
Total				12.8	30.0	13.9

Starting Points – 23

Boatable routes- 4 Kayakable routes - 13 Walkable Routes 7

Volunteers Needed – LOTS



Volunteer Roles:

- Captain – Navigates; operates boat; collect trash for return to staging point bin
- Deckhand / Datahand – inputs trash counts onto manual data sheet & optional: into Marine Debris Tracker App
- Collectors: Walks, paddles or wades ashore to pick-up trash
- Recommend 4-6 people per team
- If you have a boat and need crew or are crew in need of a boat, please advise and I will try to match you.

EVENT WAIVER: Volunteers release and forever discharge any and all rights and claims for damages, including any claims, for loss, damages, or injury to my person or property arising out of the performance or failure of performance of the San Antonio Bay Partnership, Inc., or the respective officers, agents, representatives, successors and/or assignees of the parties named above, from any and all claims, demands and liability of every kind and nature, legal or equitable, occasioned by or arising out of my participation in the event known as **POC Shorelines Cleanup**.

Volunteers must recognize the challenges of the event in which they have chosen to participate and assume all risks of personal injury or death in connection therewith. They attest that they are sufficiently physically fit to participate safely therein, and that they have not been advised otherwise by a qualified medical person.

Event Logo POC Bay RAT “Removing Awful Trash”

Supplies/ Gear to be provided:

- Trash Bags
- Bucket Rings
- Gloves
- Metal Water Bottle / full
- Masks
- Data Sheets / clipboard

Personal Gear required:

- Hat
- Sunglasses
- Sunscreen
- Wading boots or shoes (sandals not recommended for trash collectors)
- Mosquito Repellant

Follow-up Plans:

- Develop report of results
- Press release to local papers regarding results
- Post results and photos on website
- Pictures / report to sponsors
- Solicit feedback on improvements for next year

[REGISTER FOR THE SHORELINE CLEAN UP](#)

PORT O'CONNOR



Bay R.A.T.
Removing Awful Trash