

<b>1. Incident Name</b> MON-YY Sea Turtle Cold-Stunning Event	<b>2. Operational Period to be covered by IAP (Date/Time)</b> From: DD MMM YY / TIME      To: DD MMM YY / TIME	<b>CG IAP COVER SHEET</b>
--	---	-------------------------------

**3. Approved by Incident Commander(s):**

<u>ORG</u>	<u>NAME</u>
Texas Sea Turtle Standing and Salvage Network Coordinator	Dr. Donna Shaver
U.S. Fish and Wildlife Service	Mary Kay Skoruppa
NOAA – Office of Protected Resources	Dr. Brian Stacy
Texas Parks and Wildlife Department	Dakus Geeslin

## INCIDENT ACTION PLAN

The items checked below are included in this Incident Action Plan:

- Pg. 2      Incident Objectives (ICS 202-CG)
- Pg. 3      Command Direction (ICS 202A-CG)
- Pg. 5      Critical Information Requirements (ICS 202B-CG)
- Pg. 6      Organization Assignment List (ICS 203-CG)
- Pg. 7      Organization Chart (ICS 207-CG)
- Pg. 8      Assignment Lists (ICS 204-CGs) –  
Upper Texas Coast, Mid-Texas Coast, Port Aransas, Upper Laguna Madre, Lower Laguna Madre
- Pg. 18     Maps / Charts of Landside and Waterside Recovery Patrol Areas
- Pg. 80     Communications List (ICS 205A-CG)
- Pg. 83     Upper Laguna Madre Branch Communications Plan (ICS 205-CG)
- Pg. 84     Medical Plans (ICS 206-CG)  
Upper Texas Coast, Mid-Texas Coast, Port Aransas, Upper Laguna Madre, Lower Laguna Madre
- Pg. 89     Health and Safety Message (ICS 223)

**Other Attachments**

- Pg. 90     Operations Risk Assessment
- Pg. 92     Weather Forecasts / Tides/ Currents
- Pg. 93     Media Talking Points for Responders
- Pg. 94     Public Affairs Guide

<b>4. Prepared by:</b> Mike Griffin, Planning Section Chief	<b>Date/Time</b> DD MMM YY / TIME
--	--------------------------------------

<b>1. Incident Name</b> <b>MON-YY Sea Turtle Cold-Stunning Event</b>	<b>2. Operational Period (Date/Time)</b> From: DD MMM YY / TIME To: DD MMM YY / TIME	<b>INCIDENT OBJECTIVES</b> <b>ICS 202-CG</b>
<b>3. Objective(s)</b> <b>A. Provide for the safety of response personnel. (UC)</b> <b>B. Ensure a highly coordinated multi-agency and multi-organization response by using Incident Command System (ICS). (UC)</b> <b>C. Leverage technology to forecast water temperatures that lead to a cold-stunning event. (UC)</b> <b>D. Utilize technology in the reconnaissance of cold-stunned sea turtles. (OPS)</b> <b>E. Maximize recovery of cold-stunned sea turtles and transport to pre-identified landside triage area(s). (OPS)</b> <b>F. Triage cold-stunned sea turtles. (OPS)</b> <b>G. Accurately account for and employ a tracking system for cold-stunned sea turtles. (Plans, OPS)</b> <b>H. Provide for the short-term rehabilitation of affected sea turtles. (OPS)</b> <b>I. Provide for the long-term rehabilitation of affected sea turtles necessitating specialized care. (OPS)</b> <b>J. Efficiently release affected sea turtles as they are rehabilitated. (OPS)</b> <b>K. Inform the public, stakeholders, and the media of response activities as a Unified Command. (UC)</b>		
<b>4. Operational Period Command Emphasis (Safety Message, Priorities, Key Decisions/Directions)</b> Cold-stunning occurs when sea turtles become weak and inactive due to exposure to cold temperatures, typically when water temperatures drop below 50°F. Cold-stunned sea turtles become lethargic and may eventually lose the ability to swim, causing them to float at the surface. This makes them vulnerable to drowning, boat strikes, and predation. If the cold conditions persist and the turtles are not rescued, they can develop secondary health issues and may ultimately die from the exposure.  Upon receiving notification from TAMUCC Conrad Blucher Institute that water temperatures are forecasted to fall below 50°F indicating a Sea Turtle Cold-Stunning event is possible, a Pre-Event Coordination Meeting will be held, and this Incident Action Plan will be activated.  Following this coordination meeting, each Area Lead will serve as the Operations Branch Director for their respective area. They will begin coordinating resources from multiple agencies and organizations to locate, rescue, rehabilitate, and release affected sea turtles within their area of responsibility.  The National Weather Service Office (Houton/Galveston, Corpus Christi, and/or Brownsville) will be requested to provide daily weather forecasts for the designated impact locations.  Safety of responders is paramount. Responders shall follow their own agency's or organization's operational safety guidelines and employ operational risk management principles.  <b>Approved Site Safety Plan Located at:</b>		
<b>5. Prepared by: (Planning Section Chief)</b> <b>Mike Griffin, Planning Section Chief</b>		<b>Date/Time</b> <b>DD MMM YY / TIME</b>

<p><b>1. Incident Name</b>  <b>MON-YY Sea Turtle Cold-Stunning Event</b></p>	<p><b>2. Operational Period (Date/Time)</b>  From: DD MMM YY / TIME To: DD MMM YY / TIME</p>	<p><b>Command Direction</b>  <b>ICS 202A-CG</b></p>
<p><b>3. Key Decisions and Procedures:</b></p> <ul style="list-style-type: none"> <li>A. Incident Name: MON-YY Sea Turtle Cold-Stunning Event</li> <li>B. Times: All times will be in Local Time, 24-hr format, Dates: All dates will be in DD MMM YY format.</li> <li>C. Operational Period: Duration of cold-stunning event, Field Operations are recommended to be conducted during daylight hours only.</li> <li>D. This non-binding Incident Action Plan's purpose is to streamline operations. This Incident Action Plan has been designed to maximize coordination of multi-agency and multi-organization efforts to rescue, rehabilitate, and release cold-stunned sea turtles for the State of Texas utilizing Operations Branch level planning.</li> <li>E. The Area Leads are responsible for coordination and planning efforts within their region as the Operations Branch Directors.</li> <li>F. The Operations Section Chief is responsible for the coordination of operational activities across the Areas to maximize coordination efforts and collecting data (Critical Information Requirements) from the Operations Branch Directors for consolidated administrative reporting to the Unified Command.</li> <li>G. The Planning Section Chief is responsible for the development of this Incident Action Plan.</li> <li>H. Unified Command will consist of the Texas Sea Turtle Stranding and Salvage Network Coordinator (STSSN), U.S. Fish and Wildlife Service, National Oceanic and Atmospheric Administration (NOAA) Office of Protected Resources, and Texas Parks and Wildlife Department (TPWD).</li> <li>I. Participating partner organizations will consist of National Park Service-Padre Island National Seashore, Texas General Land Office, U.S. Coast Guard, Texas A&amp;M University Corpus Christi Conrad Blucher Institute and Autonomy Research Institute, Gulf Center for Sea Turtle Research, Houston Zoo, Mid-Coast Sea Turtle Rescue, Amos Rehabilitation Keep (ARK), Texas Sealife Center, Texas State Aquarium, Sea Turtle Inc., Sea World San Antonio, Keep Aransas County Beautiful, Texas Master Naturalist Program, Coastal Bend Bays &amp; Estuaries Program, Sea Tow, Texas Search and Rescue, Nueces County Coastal Parks, and Turtle Island Restoration Network.</li> <li>J. Due to the nature of these operations, there will be high media interest. The Unified Command intends on a proactive public affairs stance. All joint unified command media releases will be approved by the Unified Command prior to release.</li> <li>K. Participating partner organizations can issue their own public affairs media releases without Unified Command approval. The Unified Command have included a Public Affairs Guide to assist with public outreach and media activities should participating partner organizations not have public affairs staff.</li> <li>L. Media Talking Points for Responders have been developed and included in this IAP to assist responders should media approach a responder.</li> </ul> <p>The STSSN Coordinator in Texas is Dr. Donna Shaver. The STSSN is a cooperative effort comprised of federal, state, and permitted private partners. Its purpose is to investigate the causes of morbidity and mortality in sea turtles. The network responds to and documents both live (but compromised) and deceased sea turtles in a manner that provides valuable information for conservation management and recovery efforts. The STSSN accomplishes this through the following:</p> <ul style="list-style-type: none"> <li>• Collection of data in accordance with STSSN protocols.</li> <li>• Improved understanding of causes of death and threats to sea turtles in the marine environment.</li> <li>• Monitoring of stranding trends.</li> <li>• Provision of initial aid to live stranded sea turtles.</li> <li>• Provision of sea turtle samples and parts for conservation-related research.</li> <li>• Availability of timely data for conservation management purposes.</li> </ul> <p>Authorities: Jurisdiction of sea turtles is shared between the National Oceanic and Atmospheric Administration's National Marine Fisheries Service (NMFS) and the United States Fish and Wildlife Service (USFWS) under the Endangered Species Act (ESA) as outlined in the 2015 Memorandum of Understanding defining the roles of each agency in the joint administration of the ESA for sea turtles.</p> <ul style="list-style-type: none"> <li>• NMFS has jurisdiction in the marine environment (i.e., oceans and seas, bays, estuaries, brackish or riparian water areas, and any other marine waters adjacent to the terrestrial environment) and for activities affecting sea turtles and their habitats in the marine environment.</li> <li>• USFWS has jurisdiction in the terrestrial environment. USFWS also has jurisdiction for all imports and exports of sea turtles, including parts and products.</li> <li>• NOAA Fisheries is the lead for stranding response and coordinates with the STSSN in placement at rehabilitation facilities that meet the USFWS' Standard Conditions for Care and Maintenance of Captive Sea Turtles, USFWS shall provide assistance within its capacity.</li> <li>• USFWS is the lead for and coordinator of rehabilitation and captive holding facilities.</li> <li>• The removal of sick, injured, or deceased sea turtles from the wild requires authorization from the USFWS via an ESA Section 10(a)(1)(A) permit. However, federal or state natural resource agency employees who are designated for such purposes also have the authority to remove and transport a sick, injured, or stranded sea turtle from the wild to render aid to a sea turtle. In Texas, these natural resource agencies include NOAA Fisheries, USFWS, NPS, and TPWD.</li> <li>• The USFWS coordinates with NMFS, the State Stranding Coordinator, natural resource agencies, and authorized rehabilitation facilities to ensure activities, including stranding response, rescue, transport, rehabilitation, carcass disposal, and release back into the wild are conducted in compliance with the USFWS' Standard Conditions for Care and Maintenance of Captive Sea Turtles.</li> </ul>		

**4. Priorities:**

- A. Safety of responders.
- B. Minimize impacts to cold-stunned sea turtles.
- C. Information Management. Due to the large number of agencies and organizations, the Planning Section Chief is the data management cell and will assist the Unified Command with information management.
- D. Communication with Public/Stakeholders/Media.

**5. Limitations and Constraints:**

- A. Weather: cold temperatures, high winds, high seas.
- B. During a large or extended event, resources may become overwhelmed with the number of affected sea turtles.
- C. Limited specialized resources to care for cold-stunned sea turtles.
- D. Communications capabilities along Padre Island National Seashore and other remote areas are limited.
- E. Good Samaritans rescuing sea turtles.
- F. Computer based tracking system to ease data collection on affected sea turtles.
- G. Hazardous road conditions or road closures.
- H. Electricity outages.
- I. Accumulation of carcasses needing disposal.
- J. High media coverage.

**6. Prepared by: (Planning Section Chief)**

Mike Griffin, Planning Section Chief

**Date/Time**

DD MMM YY / TIME

<b>1. Incident Name</b> <b>MON-YY Cold-Stunning Event</b>	<b>2. Operational Period (Date/Time)</b> From: DD MMM YY / TIME To: DD MMM YY / TIME	<b>Critical Information Requirements</b> <b>ICS 202B</b>
<p><b>3. Critical Information Requirements (briefed by Branch Directors at the end of daily operations to the Operations Section Chief for consolidated reporting to the Unified Command):</b></p> <ul style="list-style-type: none"> <li>- Number of sea turtles rescued within region.</li> <li>- Number of sea turtles received and housed at each of the rehabilitation facilities / Capacity.</li> <li>- Number of sea turtles recovered unresponsive.</li> <li>- Number of sea turtles found deceased while in care.</li> <li>- Number of sea turtles released within area.</li> <li>- Any injuries to responders requiring assistance above first aid.</li> <li>- Landside and Waterside patrol efforts completed for the day.</li> <li>- Landside and Waterside patrol plans for the following day.</li> </ul> <p><b>4. Immediate Reporting Thresholds (Briefed to Unified Command within 30 minutes):</b></p> <ul style="list-style-type: none"> <li>- Adverse weather affecting field operations.</li> <li>- Any negative publicity.</li> <li>- Overabundance of sea turtles requiring recovery efforts.</li> <li>- Triage or rehabilitation facility reaching maximum capacity.</li> <li>- Any loss of critical systems (i.e. power, heat) at rehabilitation facilities.</li> <li>- Any personnel accidents or injuries requiring emergency services or immediate medical attention.</li> </ul>		
<b>4. Prepared by: (Planning Section Chief)</b> Mike Griffin, Planning Section Chief		<b>Date/Time</b> DD MMM YY / TIME



DEPARTMENT OF HOMELAND SECURITY  
U.S. COAST GUARD

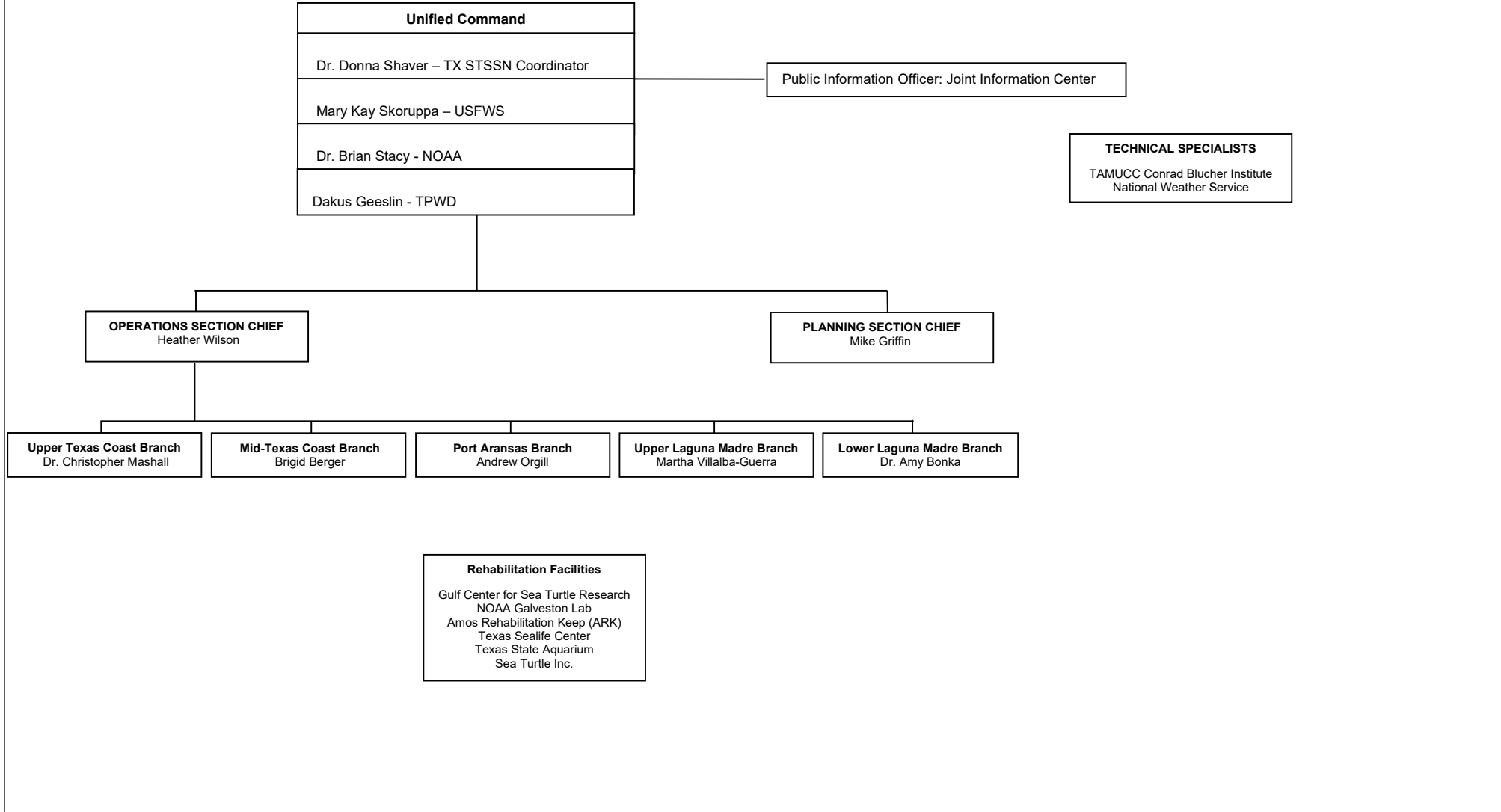
**INCIDENT ORGANIZATION CHART (ICS 207-CG)**

**1. Incident Name:**  
MON-YY Sea Turtle Cold-Stunning Event

**2. Incident Location:**

**3. Operational Period (Date/Time):**  
From: DD MMM YY / TIME To: DD MMM YY / TIME

4.



**5. Prepared By**

Name:  
Mike Griffin

Position Title:  
Planning Section Chief

Signature:

Date/Time:  
DD MMM YY / TIME

DEPARTMENT OF HOMELAND SECURITY  
U.S. COAST GUARD

**ASSIGNMENT LIST (ICS 204-CG)**

<b>1. Incident Name:</b> MON-YY Sea Turtle Cold-Stunning Event		<b>2. Operational Period:</b> From: DD MMM YY / TIME      To: DD MMM YY / TIME		<b>3. Assigned Location:</b> Branch: Upper Texas Coast Branch	
<b>4. Operations Personnel:</b>					
Position	Name	Contact Information			
Section Chief	Heather Wilson	C: (985) 768-9285			
Branch Director	Dr. Christopher Marshall	C: (409) 739-0021 O: (409) 740-4884			
<b>5. Resources Assigned:</b>					
Resource Identifier	Leader	# of Persons	Contact Information	Reporting Info / Notes	204a
See Branch Schedules for individual resources and assignments.					

**6. Work Assignments:**

Branch Director:

1. Organize and oversee Upper Texas Coast Branch response teams listed below to ensure work assignments are completed.
2. Develop Upper Texas Coast Branch Landside and Waterside Recovery Team patrol schedules to maximize rescue of affected sea turtles.
3. Maintain communications with rescue personnel.
4. Maintain accountability of rescued cold-stunned sea turtles.
5. Coordinate delivery of affected sea turtles to triage location and rehabilitation facility at Gulf Center for Sea Turtle Research or NOAA's Galveston Lab.
6. Provide daily report by the end of daily operations to Operations Section Chief.
7. Once the sea turtles that received short-term care are medically cleared, coordinate with the Texas STSSN Coordinator and USFWS to approve the release. For sea turtles requiring long-term care, rehabilitation facilities will coordinate with the Texas STSSN Coordinator and USFWS to approve the release.

Landside Recovery Teams:

1. Complete assigned Landside Recovery Patrol.
2. Locate and rescue affected cold-stunned sea turtles. Transport recovered sea turtles to vehicle, store in bins with towel placed underneath the turtle.
3. Complete necessary documentation on appropriate cold-stunned sea turtle stranding form, and complete the appropriate marking of sea turtles in accordance with Texas Sea Turtle Stranding and Cold Stunning Procedures.
4. Transport affected cold-stunned sea turtles to triage location located at the Gulf Center for Sea Turtle Research or NOAA's Galveston Lab as directed by the Upper Texas Coast Branch Director.

Waterside Recovery Teams:

1. Complete assigned Waterside Recovery Patrol.
2. Locate and rescue affected cold-stunned sea turtles.
3. If able, complete necessary documentation on appropriate cold-stunned sea turtle stranding form, and complete the appropriate marking of sea turtles in accordance with Texas Sea Turtle Stranding and Cold Stunning Procedures.
4. Transport affected cold-stunned sea turtles to closest dock designated by Branch Director. Notify Upper Texas Coast Branch Director when en route to dock with estimated time of arrival for transport coordination.
5. Boats with larger deck space may act as a transport boat to facilitate transportation of sea turtles to closest dock.

Transport Teams:

1. Transport affected cold-stunned sea turtles from docks to triage location located at the Gulf Center for Sea Turtle Research, NOAA's Galveston Lab, or temporary holding facility as directed by the Upper Texas Coast Branch Director. Upper Texas Coast Branch Director will notify Transport Team Leaders when a boat is en route to dock with estimated time of arrival for transport assignment.

**Triage Teams:**

1. Accept rescued cold-stunned sea turtles from Transport Teams.
2. Complete necessary documentation on appropriate cold-stunned sea turtle stranding form, and complete the appropriate marking of sea turtles in accordance with Texas Sea Turtle Stranding and Cold Stunning Procedures.
3. Triage cold-stunned sea turtles.
4. Provide triaged sea turtles to the Rehab Team.

**Rehab Teams:**

1. Accept cold-stunned sea turtle patients from Triage Teams.
2. Document cold-stunned sea turtle patients under care.
3. Provide short-term care and long-term care as required for cold-stunned sea turtle patients.
4. After a 24 hour waiting period (unless there are obvious signs of rigor mortis or decomposition), transport deceased sea turtles from holding areas to disposal location.
5. Once medical clearance of sea turtle patients necessitating short-term care is determined, notify the Upper Texas Coast Branch Director to coordinate release with the Texas Sea Turtle Stranding and Salvage Coordinator and USFWS.
6. For sea turtle patients necessitating long-term care, rehabilitation facilities will coordinate the Texas Sea Turtle Stranding and Salvage Coordinator and USFWS for release or other disposition.
7. Transport rehabilitated sea turtles from rehabilitation location to release site as assigned by Upper Texas Coast Branch Director.

**Release Teams:**

1. Accept rehabilitated sea turtles from rehabilitation facilities.
2. Document rehabilitated sea turtles bound for release.
3. Release rehabilitated sea turtles as authorized by the Texas Sea Turtle Stranding and Salvage Coordinator and USFWS.
4. Provide report of released sea turtles to the Upper Texas Coast Branch Director.

**7. Special Instructions:**

**Pre-Event:**

1. Ensure all responders attend annual Cold-Stunned Sea Turtle Training provided by the Texas Sea Turtle Stranding and Salvage Network Coordinator.
2. Attend pre-event Cold-Stunned Sea Turtle Coordination Meeting once water temperatures are forecasted to fall below 50°F.

**Event:**

1. Ensure the safety of all responders. All responders will follow their agency or organization specific safety guidelines.
2. Ensure proper sea turtle handling techniques and use of personal protective equipment in accordance with Texas Sea Turtle Stranding and Cold-Stunning Procedures.
3. All Field Teams will contact the Upper Texas Coast Branch Director for check-in/check-out procedures, and follow the Upper Texas Coast Branch Director guidelines for hourly safety checks.
4. Field Team Leaders will call the Upper Texas Coast Branch Director to report any stranded turtles located.
5. Field Team Leaders will debrief the Upper Texas Coast Branch Director before leaving for the day.

**8. Communications:**

Name / Function	Contact Information – radio (frequency, system, channel) / cell or phone number
Dr. Christopher Marshall - Upper Texas Coast Branch Director	C: (409) 739-0021 / O: (409) 740-4884; MarshalC@tamug.edu
Theresa Morris – Gulf Center for Sea Turtle Research	O: (409) 740-4720; TLMorris@tamug.edu
Heather Wilson / OSC	C: (985) 768-9285; Heather.Wilson@noaa.gov
Mike Griffin / PSC	C: (210) 274-2611 / O: (361) 653-2602 / O: (361) 881-1222; MGriffin@txstateaq.org, WildlifeRescueOEM@txstateaq.org

**Emergency Communications:**

Medical 911 Evacuation \_\_\_\_\_ Other \_\_\_\_\_

<b>9. Prepared by:</b> Mike Griffin, Planning Section Chief	<b>10. Reviewed by (PSC):</b> Mike Griffin, Planning Section Chief	<b>11. Reviewed by (OSC):</b> Heather Wilson, Operations Section Chief
--	---	---

DEPARTMENT OF HOMELAND SECURITY  
U.S. COAST GUARD

**ASSIGNMENT LIST (ICS 204-CG)**

<b>1. Incident Name:</b> MON-YY Sea Turtle Cold-Stunning Event		<b>2. Operational Period:</b> From: DD MMM YY / TIME      To: DD MMM YY / TIME		<b>3. Assigned Location:</b> Branch:  Mid-Texas Coast Branch	
<b>4. Operations Personnel:</b>					
Position	Name	Contact Information			
Section Chief	Heather Wilson	C: (985) 768-9285			
Branch Director	Brigid Berger	C: (713) 825-1929			
<b>5. Resources Assigned:</b>					
Resource Identifier	Leader	# of Persons	Contact Information	Reporting Info / Notes	204a
See Branch Schedules for individual resources and assignments.					

**6. Work Assignments:**

Branch Director:

1. Coordinate Mid-Texas Coast operations in collaboration with your designated permit holder and take guidance from them as required.
2. Organize and oversee Mid-Texas Coast Branch response teams listed below to ensure work assignments are completed.
3. Develop Mid-Texas Coast Branch Landside and Waterside Recovery Team patrol schedules to maximize rescue of affected sea turtles.
4. Maintain communications with rescue personnel.
5. Maintain accountability of rescued cold stunned sea turtles.
6. Coordinate delivery of affected sea turtles to rehabilitation facilities.
7. Provide daily report by the end of daily operations to Operations Section Chief.

Landside Recovery Teams:

1. Complete assigned Landside Recovery Patrol.
2. Locate and rescue affected cold-stunned sea turtles. Transport recovered sea turtles to vehicle and store in bins with towels placed underneath the turtles.
3. Complete necessary documentation on appropriate cold-stunned sea turtle stranding form and application, and complete the appropriate marking of sea turtles in accordance with Texas Sea Turtle Stranding and Cold Stunning Procedures.
4. Transport affected cold-stunned sea turtles to triage location designated by Branch Director.

Waterside Recovery Teams:

1. Complete assigned Waterside Recovery Patrol.
2. Locate and rescue affected cold-stunned sea turtles.
3. Complete necessary documentation on appropriate cold-stunned sea turtle stranding form and application, and complete the appropriate marking of sea turtles in accordance with Texas Sea Turtle Stranding and Cold Stunning Procedures.
4. Transport impacted cold stunned sea turtles to closest dock designated by Branch Director. Notify Mid-Texas Coast Branch Director when en route to dock with estimated time of arrival for transport coordination.
5. Boats with larger deck space may act as a transport boat to facilitate transportation of sea turtles to closest dock.

Transport Teams:

1. Transport affected cold-stunned sea turtles from docks to staging location. Mid-Texas Coast Branch Director will notify Transport Team Leaders when a boat is en route to dock with estimated time of arrival for transport assignment.
2. Transport affected cold-stunned sea turtles from staging location to rehab facilities or temporary holding area as assigned by Mid-Texas Coast Branch Director.

**7. Special Instructions:**

**Pre-Event:**

1. Ensure all responders attend annual Cold-Stunned Sea Turtle Training provided by the Texas Sea Turtle Stranding and Salvage Network Coordinator.
2. Attend pre-event Cold-Stunned Sea Turtle Coordination Meeting once water temperatures are forecasted to fall below 50°F.

**Event:**

1. Ensure the safety of all responders. All responders will follow their agency or organization specific safety guidelines.
2. Ensure proper sea turtle handling techniques and use of personal protective equipment in accordance with Texas Sea Turtle Stranding and Cold-Stunning Procedures.
3. All Field Teams will contact the Mid-Texas Coast Branch Director for check-in/check-out procedures and follow the Mid-Texas Coast Branch Director guidelines for hourly safety check.
4. Field Team Leaders will call Mid-Texas Coast Branch Director to report any stranded turtles located.
5. Field Team Leaders will debrief the Mid-Texas Coast Branch Director before leaving for the day.

**8. Communications:**

Name / Function	Contact Information – radio (frequency, system, channel) / cell or phone number
Brigid Berger - Mid-Texas Coast Branch Director	C: (713) 825-1929; Midcoastseaturtlerescue@gmail.com
Theresa Morris - Gulf Center for Sea Turtle Research	O: (409) 740-4720; TLMorris@tamug.edu
Andrew Orgill - Amos Rehabilitation Keep (ARK)	C: (361) 510-7332; Andrew.Orgill@austin.utexas.edu
Amanda Terry - Texas Sealife Center	C: (281) 455-0477; Texassealifecenter@gmail.com
Jesse Gilbert - Texas State Aquarium	C: (361) 834-5450; JGilbert@txstateaq.org
Heather Wilson / OSC	C: (985) 768-9285; Heather.Wilson@noaa.gov
Mike Griffin / PSC	C: (210) 274-2611 / O: (361) 653-2602 / O: (361) 881-1222; MGriffin@txstateaq.org, WildlifeRescueOEM@txstateaq.org

**Emergency Communications:**

Medical 911 Evacuation \_\_\_\_\_ Other \_\_\_\_\_

<b>9. Prepared by:</b> Mike Griffin, Planning Section Chief	<b>10. Reviewed by (PSC):</b> Mike Griffin, Planning Section Chief	<b>11. Reviewed by (OSC):</b> Heather Wilson, Operations Section Chief
--	---	---

ICS 204-CG (07/21)

DEPARTMENT OF HOMELAND SECURITY  
U.S. COAST GUARD

**ASSIGNMENT LIST (ICS 204-CG)**

<b>1. Incident Name:</b> MON-YY Sea Turtle Cold-Stunning Event		<b>2. Operational Period:</b> From: DD MMM YY / TIME      To: DD MMM YY / TIME		<b>3. Assigned Location:</b> Branch: Port Aransas Branch	
<b>4. Operations Personnel:</b>					
Position	Name	Contact Information			
Section Chief	Heather Wilson	C: (985) 768-9285			
Branch Director	Andrew Orgill	C: (361) 510-7332 O: (361) 749-6793			
Division/Group Supervisor					
<b>5. Resources Assigned:</b>			# of Persons	Contact Information	Reporting Info / Notes
Resource Identifier	Leader	204a			
See Branch Schedules for individual resources and assignments.					

**6. Work Assignments:**

Branch Director:

1. Organize and oversee Port Aransas Branch response teams listed below to ensure work assignments are completed.
2. Develop Port Aransas Branch Landside and Waterside Recovery Team patrol schedules to maximize rescue of affected sea turtles.
3. Maintain communications with rescue personnel.
4. Maintain accountability of rescued cold-stunned sea turtles.
5. Coordinate delivery of affected sea turtles to triage location and rehabilitation facility at Amos Rehabilitation Keep (ARK).
6. Provide daily report by the end of daily operations to Operations Section Chief.
7. Once the sea turtles that received short-term care are medically cleared, coordinate with the Texas STSSN Coordinator and USFWS to approve the release. For sea turtles requiring long-term care, rehabilitation facilities will coordinate with the Texas STSSN Coordinator and USFWS to approve the release.

Landside Recovery Teams

1. Complete assigned Landside Recovery Patrol.
2. Locate and rescue affected cold-stunned sea turtles. Transport recovered sea turtles to vehicle, store in bins with towels placed underneath the turtles.
3. Complete necessary documentation on appropriate cold-stunned sea turtle stranding form, and complete the appropriate marking of sea turtles in accordance with Texas Sea Turtle Stranding and Cold Stunning Procedures.
4. Transport affected cold-stunned sea turtles to triage location located at Amos Rehabilitation Keep (ARK).

Waterside Recovery Teams

1. Complete assigned Waterside Recovery Patrol.
2. Locate and rescue affected cold-stunned sea turtles.
3. If able, complete necessary documentation on appropriate cold-stunned sea turtle stranding form, and complete the appropriate marking of sea turtles in accordance with Texas Sea Turtle Stranding and Cold Stunning Procedures.
4. Transport affected cold-stunned sea turtles to closest dock designated by Branch Director. Notify Port Aransas Branch Director when en route to dock with estimated time of arrival for transport coordination.
5. Boats with larger deck space may act as a transport boat to facilitate transportation of sea turtles to closest dock.

Transport Teams

1. Transport affected cold-stunned sea turtles from docks to triage location located at Amos Rehabilitation Keep (ARK). Port Aransas Branch Director will notify Transport Team Leaders when a boat is en route to dock with estimated time of arrival for transport assignment.

Triage Teams

1. Accept rescued cold-stunned sea turtles from Transport Teams.
2. If able, complete necessary documentation on appropriate cold-stunned sea turtle stranding form, and complete the appropriate marking of sea turtles in accordance with Texas Sea Turtle Stranding and Cold Stunning Procedures.
3. Triage cold-stunned sea turtles.
4. Provide triaged sea turtles to the Rehab Team.

**Rehab Teams**

1. Accept cold-stunned sea turtle patients from Triage Teams.
2. Document cold-stunned sea turtle patients under care.
3. Provide short-term care and long-term care as required for cold-stunned sea turtle patients.
4. After a 24 hour waiting period (unless there are obvious signs of rigor mortis or decomposition), transport deceased sea turtles from holding areas to disposal site. Coordinate with USFWS for disposal of deceased sea turtles.
5. Once medical clearance of sea turtle patients necessitating short-term care is determined, notify the Port Aransas Branch Director to coordinate release with the USFWS and Texas Sea Turtle Stranding and Salvage Coordinator.
6. For sea turtle patients necessitating long-term care, rehabilitation facilities will coordinate the Texas Sea Turtle Stranding and Salvage Coordinator and USFWS for release or other disposition.
7. Transport rehabilitated sea turtles from rehabilitation location to release site as assigned by Port Aransas Branch Director.

**Release Teams:**

1. Accept rehabilitated sea turtles from rehabilitation facilities.
2. Document rehabilitated sea turtles bound for release.
3. Release rehabilitated sea turtles as authorized by the Texas Sea Turtle Stranding and Salvage Coordinator and USFWS.
4. Provide report of released sea turtles to the Port Aransas Branch Director.

**7. Special Instructions:****Pre-Event:**

1. Ensure all responders attend annual Cold-Stunned Sea Turtle Training provided by the Texas Sea Turtle Stranding and Salvage Network Coordinator.
2. Attend pre-event Cold-Stunned Sea Turtle Coordination Meeting once water temperatures are forecasted to fall below 50°F.

**Event:**

1. Ensure the safety of all responders. All responders will follow their agency or organization specific safety guidelines.
2. Ensure proper sea turtle handling techniques and use of personal protective equipment in accordance with Texas Sea Turtle Stranding and Cold-Stunning Procedures.
3. All Field Teams will contact the Port Aransas Branch Director for check-in/check-out procedures, and follow the Port Aransas Branch Director guidelines for hourly safety checks.
4. Field Team Leaders will call the Port Aransas Branch Director to report any stranded turtles located.
5. Field Team Leaders will debrief the Port Aransas Branch Director before leaving for the day.

**8. Communications:**

Name / Function	Contact Information – radio (frequency, system, channel) / cell or phone number
Andrew Orgill - Port Aransas Branch Director & Amos Rehabilitation Keep (ARK)	C: (361) 510-7332 / O: (361) 749-6793; Andrew.Orgill@austin.utexas.edu
Amanda Terry - Texas Sealife Center	C: (281) 455-0477; Texassealifecenter@gmail.com
Jesse Gilbert - Texas State Aquarium	C: (361) 834-5450; JGilbert@txstateaq.org
Heather Wilson / OSC	C: (985) 768-9285; Heather.Wilson@noaa.gov
Mike Griffin / PSC	C: (210) 274-2611 / O: (361) 653-2602 / O: (361) 881-1222; MGriffin@txstateaq.org, WildlifeRescueOEM@txstateaq.org

**Emergency Communications:**

Medical \_\_\_\_\_ 911 \_\_\_\_\_ Evacuation \_\_\_\_\_ Other \_\_\_\_\_

<b>9. Prepared by:</b> Mike Griffin, Planning Section Chief	<b>10. Reviewed by (PSC):</b> Mike Griffin, Planning Section Chief	<b>11. Reviewed by (OSC):</b> Heather Wilson, Operations Section Chief
--	---	---

ICS 204-CG (07/21)

DEPARTMENT OF HOMELAND SECURITY  
U.S. COAST GUARD

**ASSIGNMENT LIST (ICS 204-CG)**

<b>1. Incident Name:</b> MON-YY Sea Turtle Cold-Stunning Event		<b>2. Operational Period:</b> From: DD MMM YY / TIME      To: DD MMM YY / TIME		<b>3. Assigned Location:</b> Branch: Upper Laguna Madre Branch	
<b>4. Operations Personnel:</b>					
Position	Name	Contact Information			
Section Chief	Heather Wilson	C: (985) 768-9285			
Branch Director	Martha Villalba-Guerra	C: (956) 227-1691 O: (361) 949-8069			
<b>5. Resources Assigned:</b>			# of Persons	Contact Information	Reporting Info / Notes
Resource Identifier	Leader	204a			
See Branch Schedules for individual resources and assignments.					

**6. Work Assignments:**

Branch Director:

1. Organize and oversee Upper Laguna Madre Branch response teams listed below to ensure work assignments are completed.
2. Develop Upper Laguna Madre Branch Landside and Waterside Recovery Team patrol schedules to maximize rescue of affected sea turtles.
3. Maintain communications with rescue personnel.
4. Maintain accountability of rescued cold-stunned sea turtles.
5. Coordinate delivery of affected sea turtles to triage location and rehabilitation facilities.
6. Provide daily report by the end of daily operations to Operations Section Chief.

Landside Recovery Teams:

1. Complete assigned Landside Recovery Patrol.
2. Locate and rescue affected cold-stunned sea turtles. Transport recovered sea turtles to vehicle, store in bins with towels placed underneath the turtles.
3. Complete necessary documentation on appropriate cold-stunned sea turtle stranding form, and complete the appropriate marking of sea turtles in accordance with Texas Sea Turtle Stranding and Cold Stunning Procedures.
4. Transport affected cold-stunned sea turtles to triage location located at Padre Island National Seashore Sea Turtle Science and Recovery (STSR) Building or other temporary facility as designated by the Upper Laguna Madre Branch Director.

Waterside Recovery Teams:

1. Complete assigned Waterside Recovery Patrol.
2. Locate and rescue affected cold-stunned sea turtles.
3. If able, complete necessary documentation on appropriate cold-stunned sea turtle stranding form, and complete the appropriate marking of sea turtles in accordance with Texas Sea Turtle Stranding and Cold Stunning Procedures.
4. Transport affected cold-stunned sea turtles to closest dock (Bird Island Basin or Marker 37). Notify PAIS Dispatch when en route to dock with number of sea turtles and estimated time of arrival for transport coordination.
5. Boats with larger deck space may act as a transport boat to facilitate transportation of sea turtles to closest dock.

Transport Teams:

1. Transport affected cold-stunned sea turtles from docks (Marker 37, Bird Island Basin) to triage location located at Padre Island National Seashore Sea Turtle Science and Recovery (STSR) Building or other temporary facility as designated by the Upper Laguna Madre Branch Director. PAIS Dispatch will notify Transport Team Leaders when a boat is en route to dock with estimated time of arrival for transport assignment.
2. PAIS Dispatch may divert Transport Teams to rescue affected cold-stunned sea turtles that are located ashore by the Reconnaissance and Waterside Recovery Team Personnel.
3. Transport affected cold-stunned sea turtles from triage location to rehab facilities as assigned by Upper Laguna Madre Branch Director.

Triage Teams:

1. Accept rescued cold-stunned sea turtles from Transport Teams.
2. Complete necessary documentation on appropriate cold-stunned sea turtle stranding form, and complete the appropriate marking of sea turtles in accordance with Texas Sea Turtle Stranding and Cold Stunning Procedures.
3. Triage cold-stunned sea turtles.

4. Assign cold-stunned sea turtle patients to rehabilitation locations.
5. Upper Laguna Madre Branch Director to coordinate with Transport Teams for transportation of sea turtle patients to rehabilitation facilities.

**Rehab Teams:**

1. Accept cold-stunned sea turtle patients from Transport Teams.
2. Document cold-stunned sea turtle patients under care.
3. Triage cold-stunned sea turtle patients.
4. Provide short-term care and long-term care as required for cold-stunned sea turtle patients.
5. After a 24 hour waiting period (unless there are obvious signs of rigor mortis or decomposition), transport deceased sea turtles from holding areas to disposal site. Coordinate with USFWS for disposal site of deceased sea turtles.
7. Once the sea turtles that received short-term care are medically cleared, rehabilitation facilities will coordinate with the Texas STSSN Coordinator and USFWS to approve the release.
8. For sea turtles requiring long-term care, rehabilitation facilities will coordinate with the Texas STSSN Coordinator and USFWS to approve the release or other disposition.
9. Transport rehabilitated sea turtles from rehabilitation location to release site as assigned.

**Release Teams:**

1. Accept rehabilitated sea turtles from Rehabilitation Facilities.
2. Document rehabilitated sea turtles bound for release.
3. Release rehabilitated sea turtles as authorized by the Texas Sea Turtle Stranding and Salvage Coordinator and USFWS.
4. Provide report of released sea turtles to the Upper Laguna Madre Branch Director.

**Recon Teams:**

1. Employ (if available) UAS technology to identify cold-stunned sea turtles.
2. Employ (if available) U.S. Coast Guard Helicopter (Coast Guard Sector Corpus Christi (800) 874-2143) to identify cold-stunned sea turtles.
3. Notify PAIS Dispatch once cold-stunned sea turtles are located. PAIS Dispatch will notify Landside and/or Waterside Recovery Teams for sea turtle rescue.

**7. Special Instructions:**

**Pre-Event:**

1. Ensure all responders attend annual Cold-Stunned Sea Turtle Training provided by the Texas Sea Turtle Stranding and Salvage Network Coordinator.
2. Attend pre-event Cold-Stunned Sea Turtle Coordination Meeting once water temperatures are forecasted to fall below 50°F.

**Event:**

1. Ensure the safety of all responders. All responders will follow their agency or organization specific safety guidelines.
2. Ensure proper sea turtle handling techniques and use of personal protective equipment in accordance with Texas Sea Turtle Stranding and Cold-Stunning Procedures.
3. All Field Teams should report to the Padre Island National Seashore Sea Turtle Science and Recovery (STSR) Building for check-in/check-out procedures.
4. Field Team Leaders will call PAIS Dispatch "700" once an hour for safety check via radio channel "PAIS N", if no radio comms call (361) 666-1894.
5. Field Team Leaders will call "700" Dispatch to report any stranded turtles located.
6. Field Team Leaders will debrief the Operations Branch Director before leaving for the day.

**8. Communications:**

Name / Function	Contact Information – radio (frequency, system, channel) / cell or phone number
PAIS Dispatch / Coordination	Call "700" on Park Channel "PAIS N"; if no radio comms call (361) 666-1894
PAIS LE / Emergency	Call "200" on Park Channel "PAIS N"
Andrew Orgill - Amos Rehabilitation Keep (ARK)	C: (361) 510-7332; Andrew.Orgill@austin.utexas.edu
Amanda Terry - Texas Sealife Center	C: (281) 455-0477; Texassealifecenter@gmail.com
Jesse Gilbert - Texas State Aquarium	C: (361) 834-5450; JGilbert@txstateaq.org
Heather Wilson / OSC	C: (985) 768-9285; Heather.Wilson@noaa.gov
Mike Griffin / PSC	C: (210) 274-2611 / O: (361) 653-2602 / O: (361) 881-1222; MGriffin@txstateaq.org, WildlifeRescueOEM@txstateaq.org

**Emergency Communications:**

Medical 911 Evacuation \_\_\_\_\_ Other \_\_\_\_\_

<b>9. Prepared by:</b> Mike Griffin, Planning Section Chief	Date/Time _____	<b>10. Reviewed by (PSC):</b> Mike Griffin, Planning Section Chief	Date/Time _____	<b>11. Reviewed by (OSC):</b> Heather Wilson, Operations Section Chief	Date/Time _____
--	-----------------	---	-----------------	---	-----------------

ICS 204-CG (07/21)

DEPARTMENT OF HOMELAND SECURITY  
U.S. COAST GUARD

**ASSIGNMENT LIST (ICS 204-CG)**

<b>1. Incident Name:</b> MON-YY Sea Turtle Cold-Stunning Event		<b>2. Operational Period:</b> From: DD MMM YY / TIME      To: DD MMM YY / TIME		<b>3. Assigned Location:</b> Branch:  Lower Laguna Madre Branch	
<b>4. Operations Personnel:</b>					
Position	Name	Contact Information			
Section Chief	Heather Wilson	C: (985) 768-9285			
Branch Director	Dr. Amy Bonka	C: (256) 328-4801 O: (956) 761-4511 x 107			
<b>5. Resources Assigned:</b>		# of Persons	Contact Information	Reporting Info / Notes	204a
Resource Identifier	Leader				
See Branch Schedules for individual resources and assignments.					

**6. Work Assignments:**

Branch Director:

1. Organize and oversee Lower Laguna Madre Branch response teams listed below to ensure work assignments are completed.
2. Develop Lower Laguna Madre Branch Landside and Waterside Recovery Team patrol schedules to maximize rescue of affected sea turtles.
3. Maintain communications with rescue personnel.
4. Maintain accountability of rescued cold-stunned sea turtles.
5. Coordinate delivery of affected sea turtles to triage location and rehabilitation facility at Sea Turtle Inc.
6. Provide daily report by the end of daily operations to Operations Section Chief.
7. Once the sea turtles that received short-term care are medically cleared, coordinate with the Texas STSSN Coordinator and USFWS to approve the release. For sea turtles requiring long-term care, rehabilitation facilities will coordinate with the Texas STSSN Coordinator and USFWS to approve the release.

Landside Recovery Teams:

1. Complete assigned Landside Recovery Patrol.
2. Locate and rescue affected cold-stunned sea turtles. Transport recovered sea turtles to vehicle, store in bins with towel placed underneath the turtle.
3. Complete necessary documentation on appropriate cold-stunned sea turtle stranding form, and complete the appropriate marking of sea turtles in accordance with Texas Sea Turtle Stranding and Cold Stunning Procedures.
4. Transport affected cold-stunned sea turtles to triage location located at Sea Turtle Inc or other temporary facility as designated by the Lower Laguna Madre Branch Director.

Waterside Recovery Teams:

1. Complete assigned Waterside Recovery Patrol.
2. Locate and rescue affected cold-stunned sea turtles.
3. If able, complete necessary documentation on appropriate cold-stunned sea turtle stranding form, and complete the appropriate marking of sea turtles in accordance with Texas Sea Turtle Stranding and Cold Stunning Procedures.
4. Transport affected cold-stunned sea turtles to closest dock designated by the Branch Director. Notify Lower Laguna Madre Branch Director when en route to dock with estimated time of arrival for transport coordination.
5. Boats with larger deck space may act as a transport boat to facilitate transportation of sea turtles to closest dock.

Transport Teams:

1. Transport affected cold-stunned sea turtles from docks to triage location located at Sea Turtle Inc or other temporary facility as designated by the Lower Laguna Madre Branch Director. Lower Laguna Madre Branch Director will notify Transport Team Leaders when a boat is en route to dock with estimated time of arrival for transport assignment.

Triage Teams:

1. Accept rescued cold-stunned sea turtles from Transport Teams.
2. Complete necessary documentation on appropriate cold-stunned sea turtle stranding form, and complete the appropriate marking of sea turtles in accordance with Texas Sea Turtle Stranding and Cold Stunning Procedures.
3. Triage cold-stunned sea turtles.
4. Provide triaged sea turtles to the Rehab Team.

**Rehab Teams:**

1. Accept cold-stunned sea turtle patients from Triage Teams.
2. Document cold-stunned sea turtle patients under care.
3. Provide short-term care and long-term care as required for cold-stunned sea turtle patients.
4. After a 24 hour waiting period (unless there are obvious signs of rigor mortis or decomposition), transport deceased sea turtles from holding areas to disposal location.
5. Once medical clearance of sea turtle patients necessitating short-term care is determined, notify the Lower Laguna Madre Branch Director to coordinate release with the Texas Sea Turtle Stranding and Salvage Coordinator and USFWS.
6. For sea turtle patients necessitating long-term care, rehabilitation facilities will coordinate the Texas Sea Turtle Stranding and Salvage Coordinator and USFWS for release or other disposition.
7. Transport rehabilitated sea turtles from rehabilitation location to release site as assigned by Lower Laguna Madre Branch Director.

**Release Teams:**

1. Accept rehabilitated sea turtles from Rehabilitation Facilities.
2. Document rehabilitated sea turtles bound for release.
3. Release rehabilitated sea turtles as authorized by the Texas Sea Turtle Stranding and Salvage Coordinator and USFWS.
4. Provide report of released sea turtles to the Lower Laguna Madre Branch Director.

**7. Special Instructions:****Pre-Event:**

1. Ensure all responders attend annual Cold-Stunned Sea Turtle Training provided by the Texas Sea Turtle Stranding and Salvage Network Coordinator.
2. Attend pre-event Cold-Stunned Sea Turtle Coordination Meeting once water temperatures are forecasted to fall below 50°F.

**Event:**

1. Ensure the safety of all responders. All responders will follow their agency or organization specific safety guidelines.
2. Ensure proper sea turtle handling techniques and use of personal protective equipment in accordance with Texas Sea Turtle Stranding and Cold-Stunning Procedures.
3. All Field Teams will contact the Lower Laguna Madre Branch Director for check-in/check-out procedures, and follow the Lower Laguna Madre Branch Director guidelines for hourly safety checks.
4. Field Team Leaders will call the Lower Laguna Madre Branch Director to report any stranded turtles located.
5. Field Team Leaders will debrief the Lower Laguna Madre Branch Director before leaving for the day.

**8. Communications:**

Name / Function	Contact Information – radio (frequency, system, channel) / cell or phone number
Dr. Amy Bonka - Lower Laguna Madre Branch Director & Sea Turtle Inc.	C: (256) 328-4801 / O: (956) 761-4511 x 107; Amy.Bonka@seaturtleinc.org
Heather Wilson / OSC	C: (985) 768-9285; Heather.Wilson@noaa.gov
Mike Griffin / PSC	C: (210) 274-2611 / O: (361) 653-2602 / O: (361) 881-1222; MGriffin@txstateaq.org, WildlifeRescueOEM@txstateaq.org

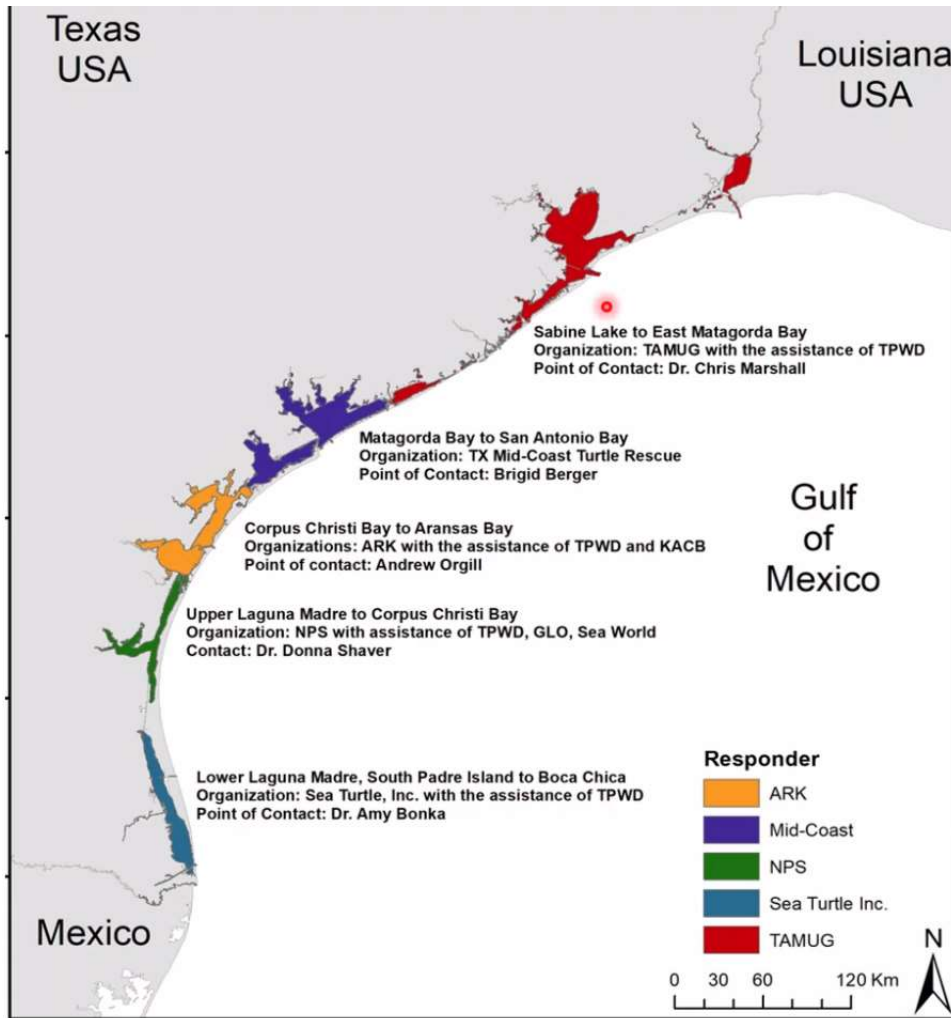
**Emergency Communications:**

Medical 911 Evacuation \_\_\_\_\_ Other \_\_\_\_\_

9. Prepared by:	Date/Time	10. Reviewed by (PSC):	Date/Time	11. Reviewed by (OSC):	Date/Time
Mike Griffin, Planning Section Chief		Mike Griffin, Planning Section Chief		Heather Wilson, Operations Section Chief	

ICS 204-CG (07/21)

# Texas Coast Branch Areas



Upper Texas Coast: Dr. Chris Mashall

- Sabine Lake to East Matagorda Bay

Mid-Texas Coast: Brigid Berger

- Matagorda Bay to San Antonio Bay

Port Aransas: Andrew Orgill

- Mesquite Bay to Packery Channel

Upper Laguna Madre: Dr. Dona Shaver / Martha Villalba-Guerra

- Packery Channel to Landcut

Lower Laguna Made: Dr. Amy Bonka

- South of Landcut to Boca

# Upper Texas Coast Branch Landside Recovery Team Patrol Areas

# Upper Texas Coast Branch – Landside Recovery Team Area 1: Bolivar Peninsula



# Upper Texas Coast Branch – Landside Recovery Team Area 2: Galveston Island



# Upper Texas Coast Branch – Landside Recovery Team Area 3: Follett's Island



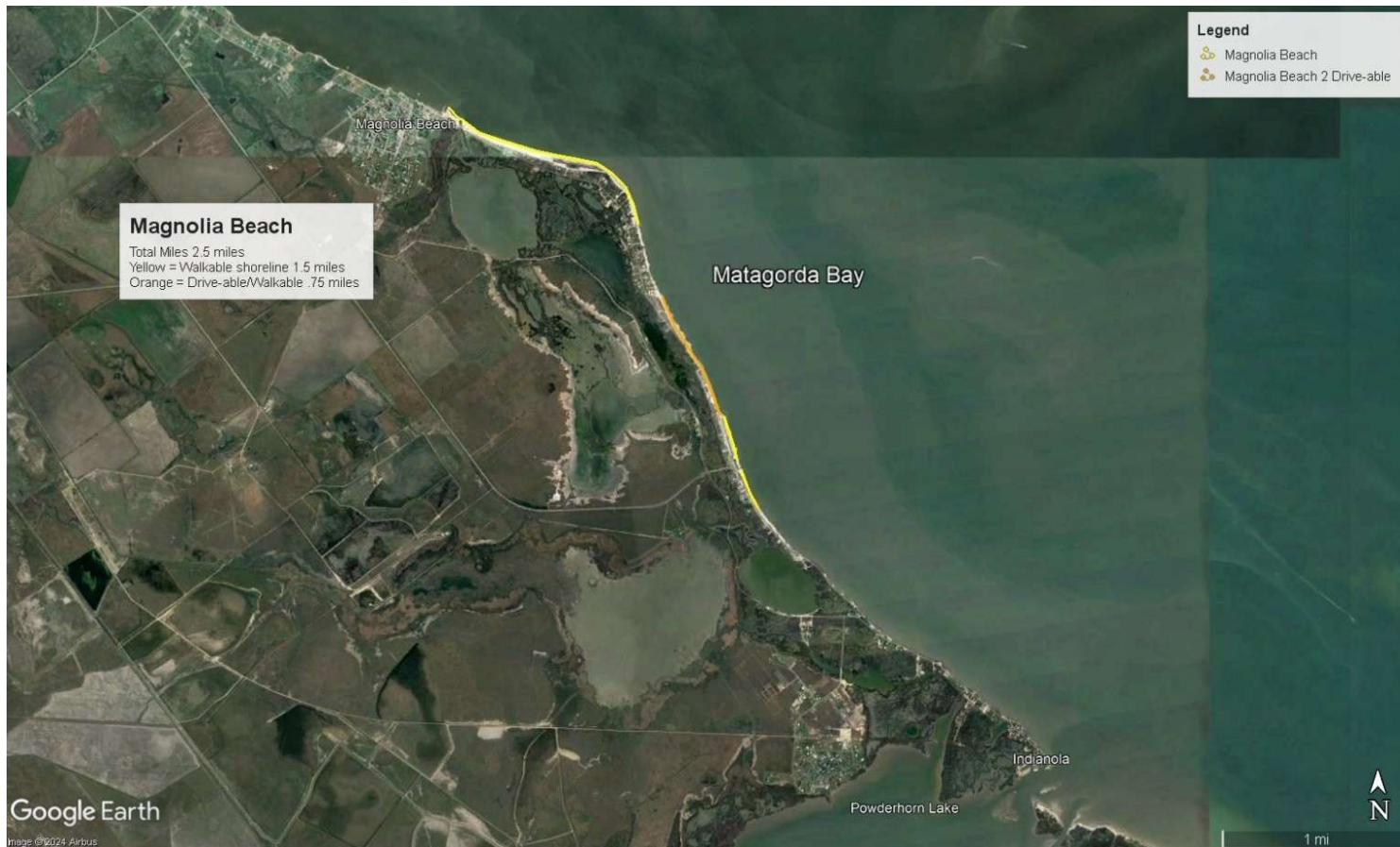
# Mid-Texas Coast Branch Landside Recovery Team Patrol Areas

See attached maps. Approximately 7.64 miles of walkable search areas.

Walkable search areas include public shorelines located on various sections of Matagorda Bay, and shorelines accessed through Powderhorn State Park and Powderhorn Wildlife Management area. While these areas have been identified as walkable, they may or may not be searched during cold-stunning events depending on the availability of volunteers, weather conditions and other factors such as conflicting events (Public Hunts at WMA).

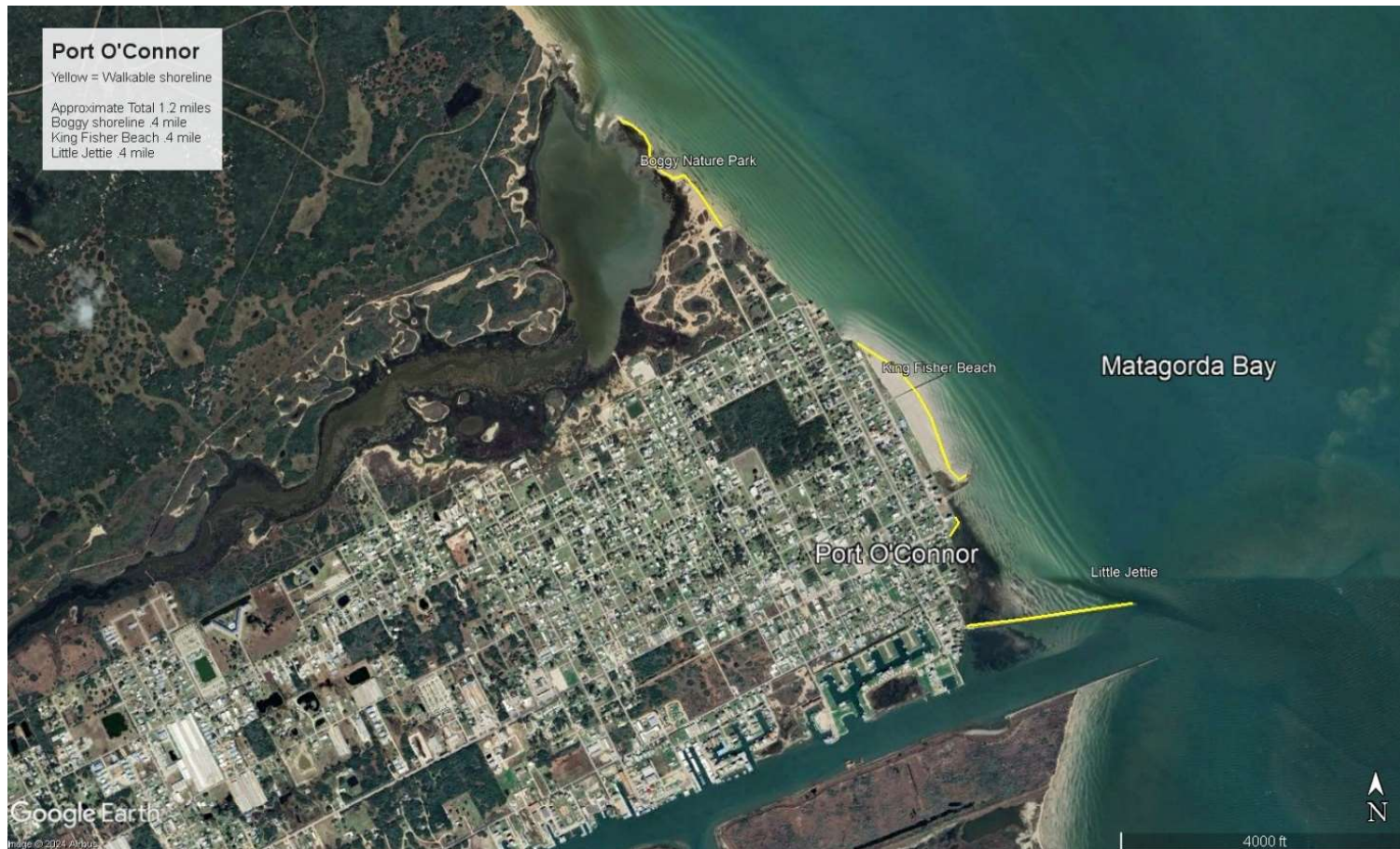
# Mid-Texas Coast Branch – Landside Recovery Team

Area 1: Matagorda Bay - Magnolia Beach: 2.5 miles walkable shoreline



# Mid-Texas Coast Branch – Landside Recovery Team

Area 2: Matagorda Bay - Port O'Connor: Total 1.2 miles



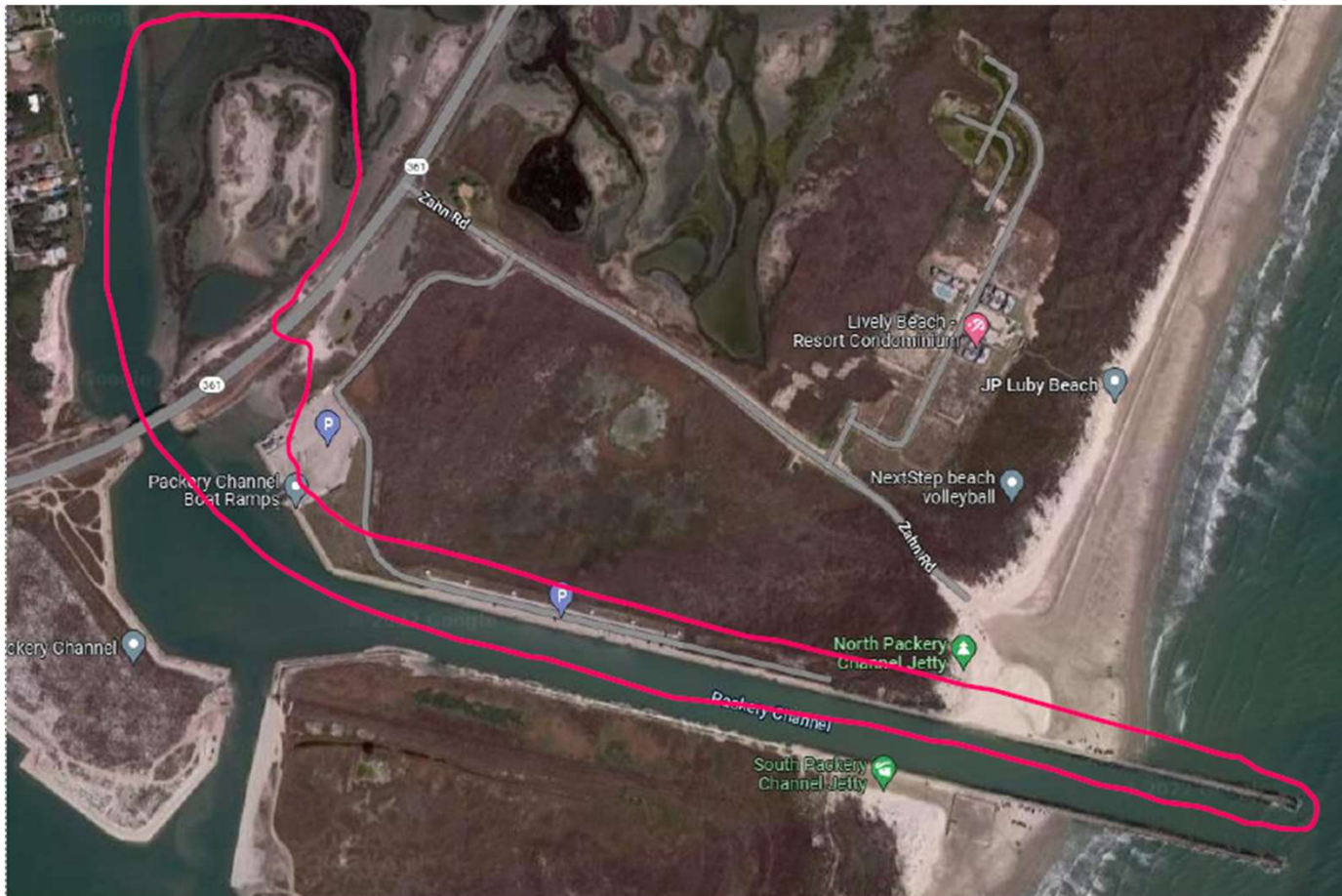
# Mid-Texas Coast Branch – Landside Recovery Team

Area 3: Matagorda Bay - Powderhorn WMA and Powderhorn SP: Total 2.3 miles Powderhorn Lake: Total 1.64 miles



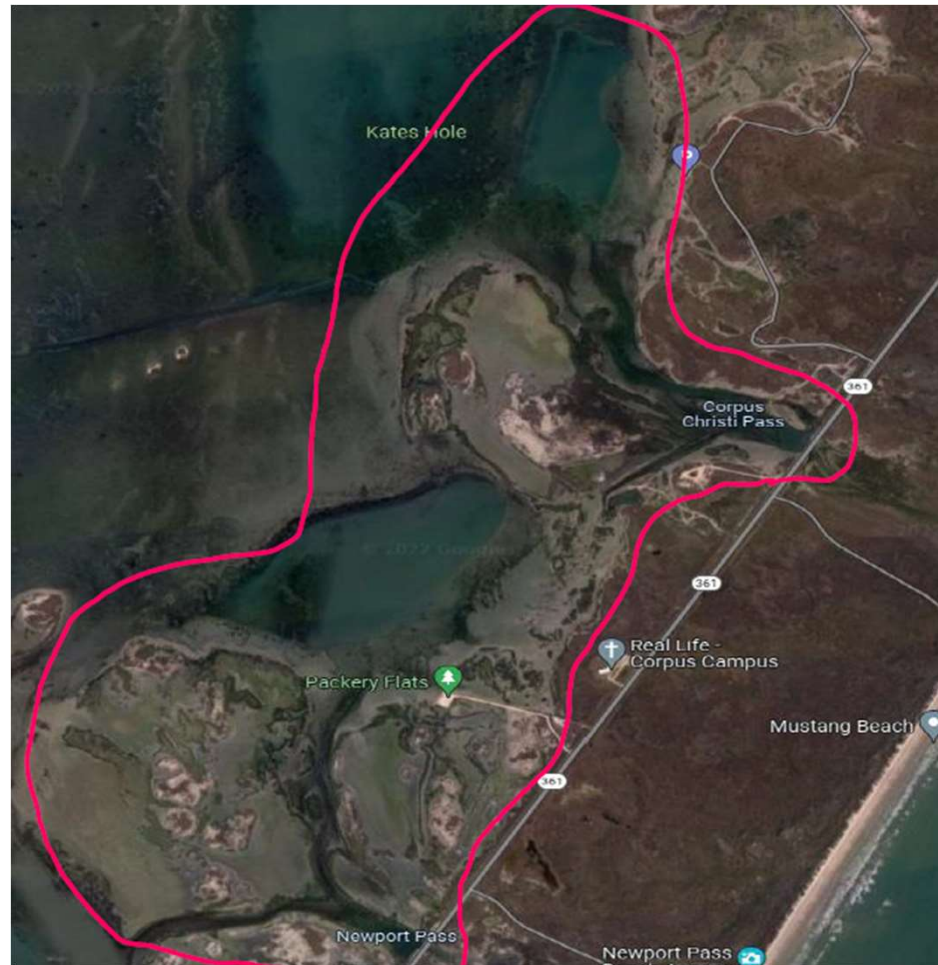
Port Aransas Branch  
Landside Recovery Team  
Patrol Areas

# Port Aransas Branch – Landside Recovery Team Area 1: North Packery Jetty, Packery Bridge



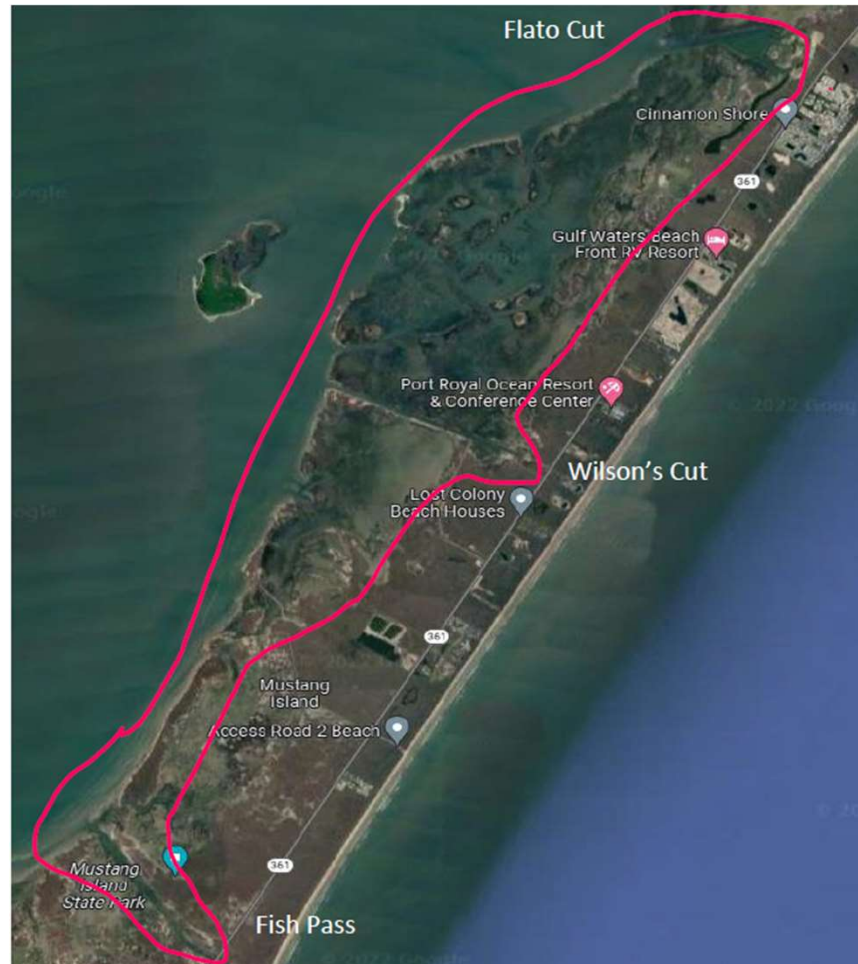
# Port Aransas Branch – Landside Recovery Team

## Area 2: Newport Pass, Packery Flats, Real Life Church, Corpus Christi Pass



# Port Aransas Branch – Landside Recovery Team

## Area 3: Fish Pass, Wilson's Cut, Flato Cut

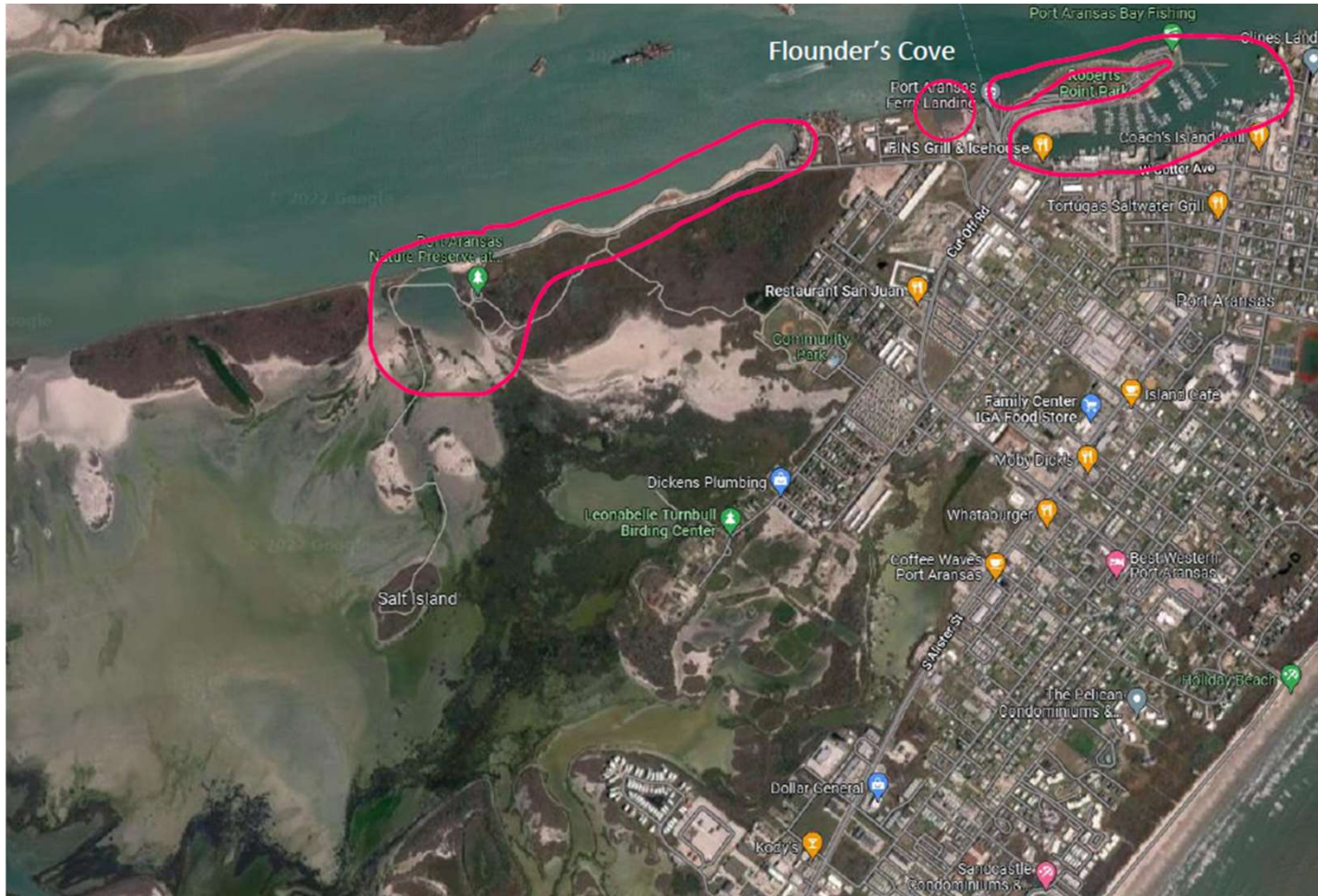


# Port Aransas Branch – Landside Recovery Team Area 4: Island Moorings



# Port Aransas Branch – Landside Recovery Team

## Area 5: Charlie's Pasture, Flounder's Cove, Robert's Point Park, PA City Marina



# Port Aransas Branch – Landside Recovery Team

Area 6: Turtle Cove, Cline's Landing, Baytree, Private Marina, Channel View Condos, UTMSI Marina



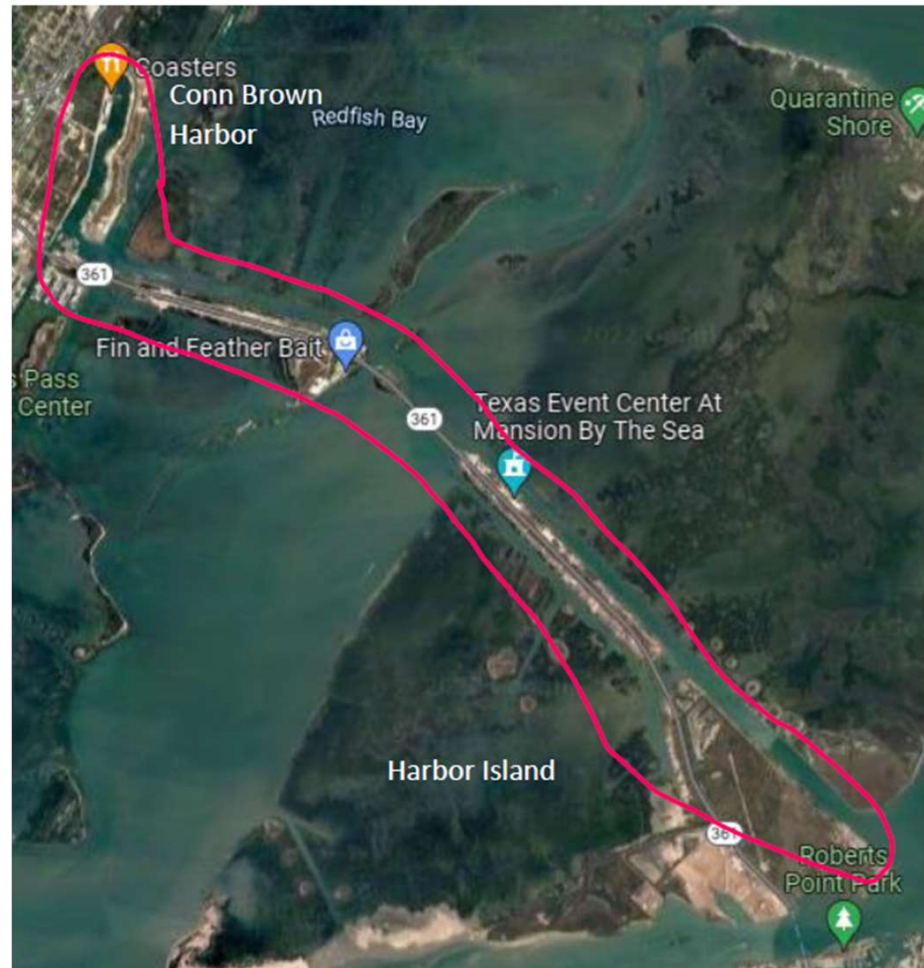
# Port Aransas Branch – Landside Recovery Team

## Area 7: UTMSI wetlands, Aransas Pass Ship Channel (APSC) South Jetty



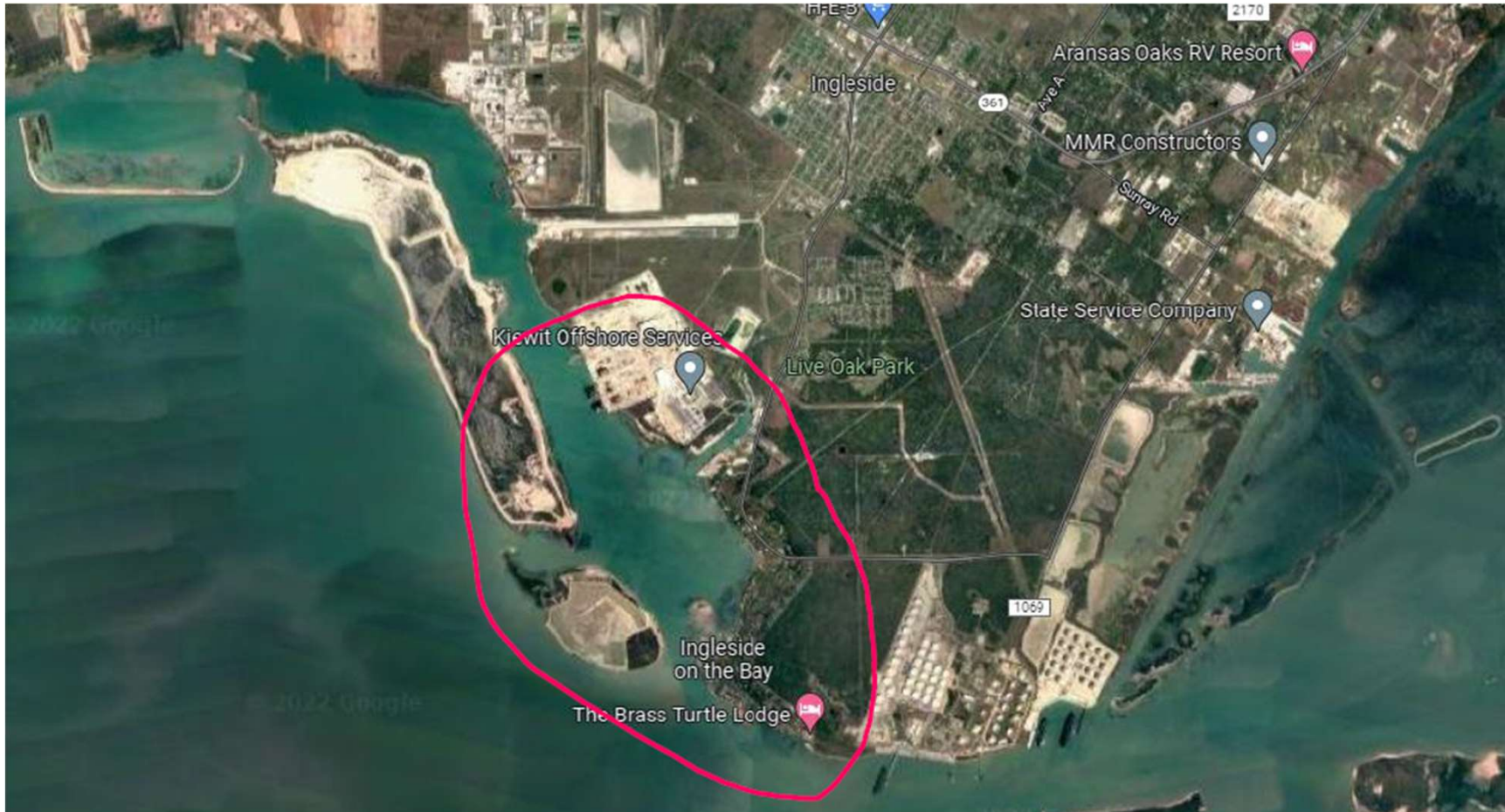
# Port Aransas Branch – Landside Recovery Team

## Area 8: Harbor Island, Redfish Bay Causeway, Conn Brown Harbor



# Port Aransas Branch – Landside Recovery Team

## Area 9: Ingleside on the Bay



# Upper Laguna Madre Branch Landside Recovery Team Patrol Areas

# Upper Laguna Madre Branch – Landside Recovery Team

Area 1: Lake Padre and Canals, 361 Bridge, Packery Channel, Boat Ramp, The Pines, Clem's, Billings, Doc's, and JFK Causeway

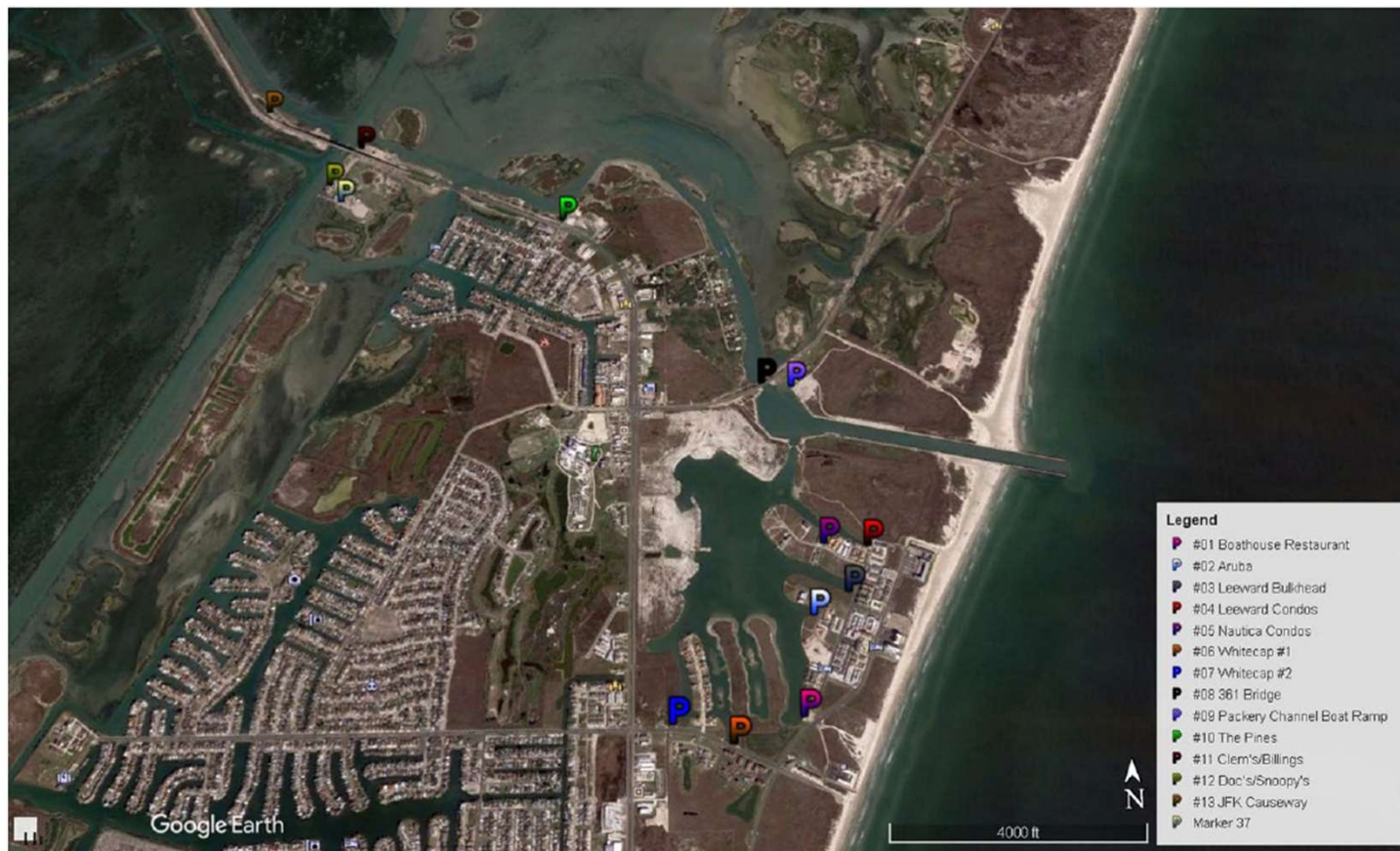


Figure 1. Overview of search area

# Upper Laguna Madre Branch – Landside Recovery Team

Area 1: Lake Padre and Canals, 361 Bridge, Packery Channel, Boat Ramp, The Pines, Clem's, Billings, Doc's, and JFK Causeway



Figure 2. #1: Boathouse Restaurant survey areas



# Upper Laguna Madre Branch – Landside Recovery Team

Area 1: Lake Padre and Canals, 361 Bridge, Packery Channel, Boat Ramp, The Pines, Clem's, Billings, Doc's, and JFK Causeway



Figure 4. #6-7: Whitecap search areas

# Upper Laguna Madre Branch – Landside Recovery Team

Area 1: Lake Padre and Canals, 361 Bridge, Packery Channel, Boat Ramp, The Pines, Clem's, Billings, Doc's, and JFK Causeway



# Upper Laguna Madre Branch – Landside Recovery Team

Area 1: Lake Padre and Canals, 361 Bridge, Packery Channel, Boat Ramp, The Pines, Clem's, Billings, Doc's, and JFK Causeway



Figure 7. #11–13: Clem's, Billings, Doc's, and JFK Causeway search areas

# Upper Laguna Madre Branch – Landside Recovery Team

## Area 2: Packery Channel / Packery Channel Park



Figure 8. Packery Channel survey area

# Upper Laguna Madre Branch – Landside Recovery Team

## Area 2: Packery Channel / Packery Channel Park



Figure 9. Packery Channel Park survey area

# Upper Laguna Madre Branch – Landside Recovery Team

## Area 3: Bird Island Basin

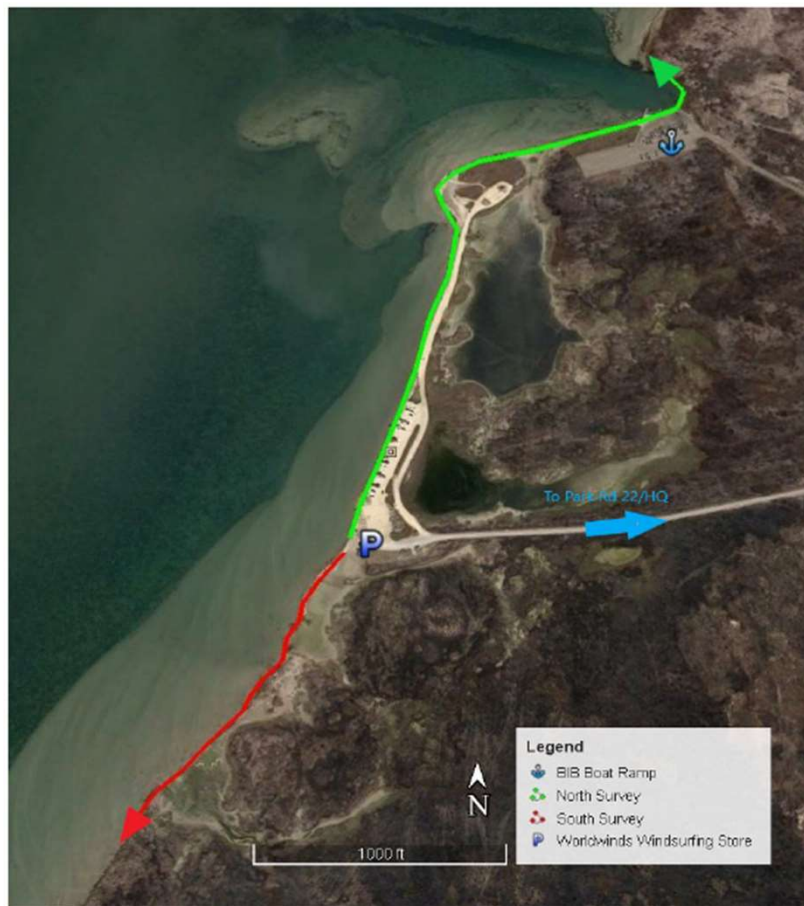


Figure 10. Bird Island Basin (BIB) survey area

# Upper Laguna Madre Branch – Landside Recovery Team

## Area 4: PAIS Back County Access Points



# Lower Laguna Madre Branch Landside Recovery Team Patrol Areas

Cold stun walking routes: These include bayside areas across South Padre Island, Port Isabel, Laguna Vista, Laguna Heights, and the boat ramps along highway 48. Stars indicate general area, walking patrollers aim to cover all coastline in the area



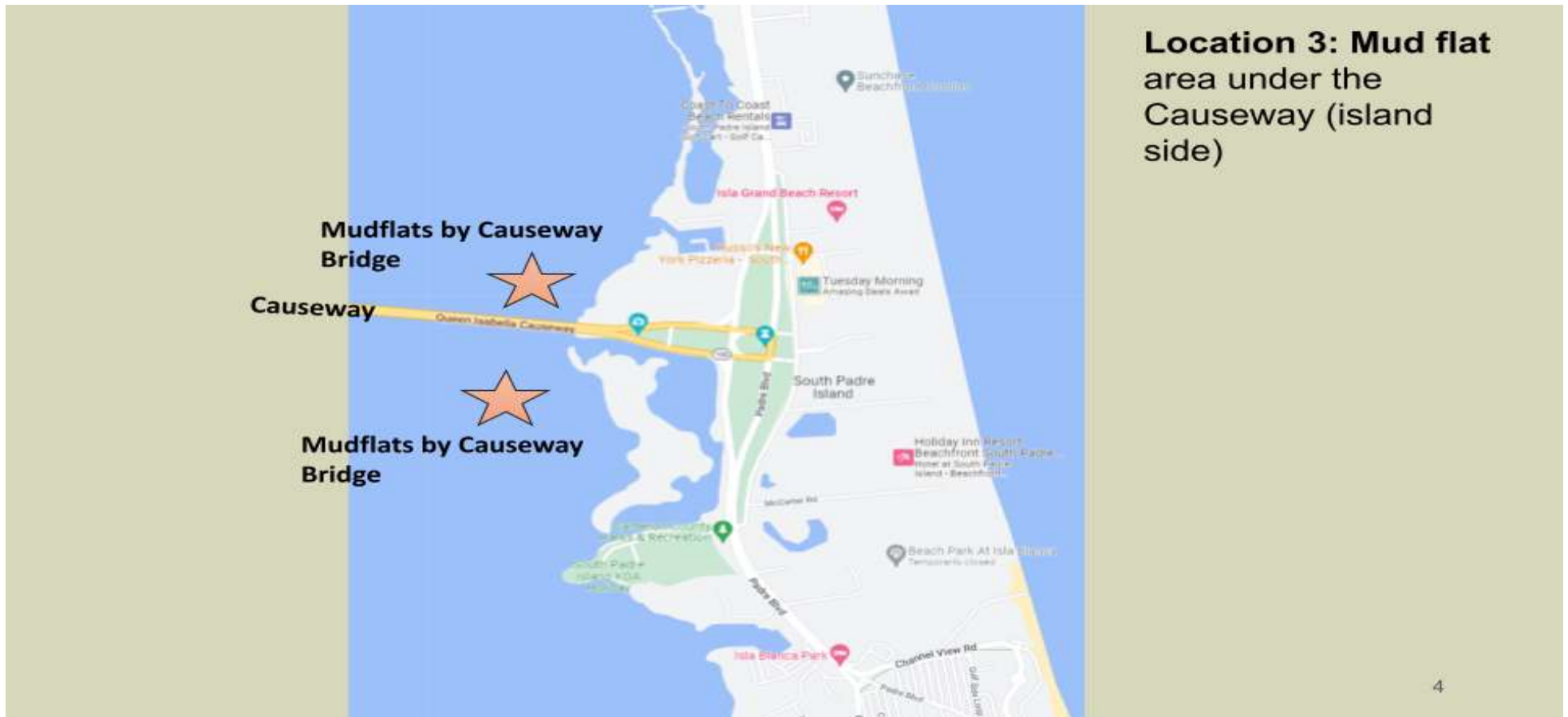
# Lower Laguna Madre Branch – Landside Recovery Team

## Area 2: End of bayside streets, SPI



# Lower Laguna Madre Branch – Landside Recovery Team

## Area 3: Bayside mudflats



# Lower Laguna Madre Branch – Landside Recovery Team

## Area 4: Bayside mudflats near old Pier 19



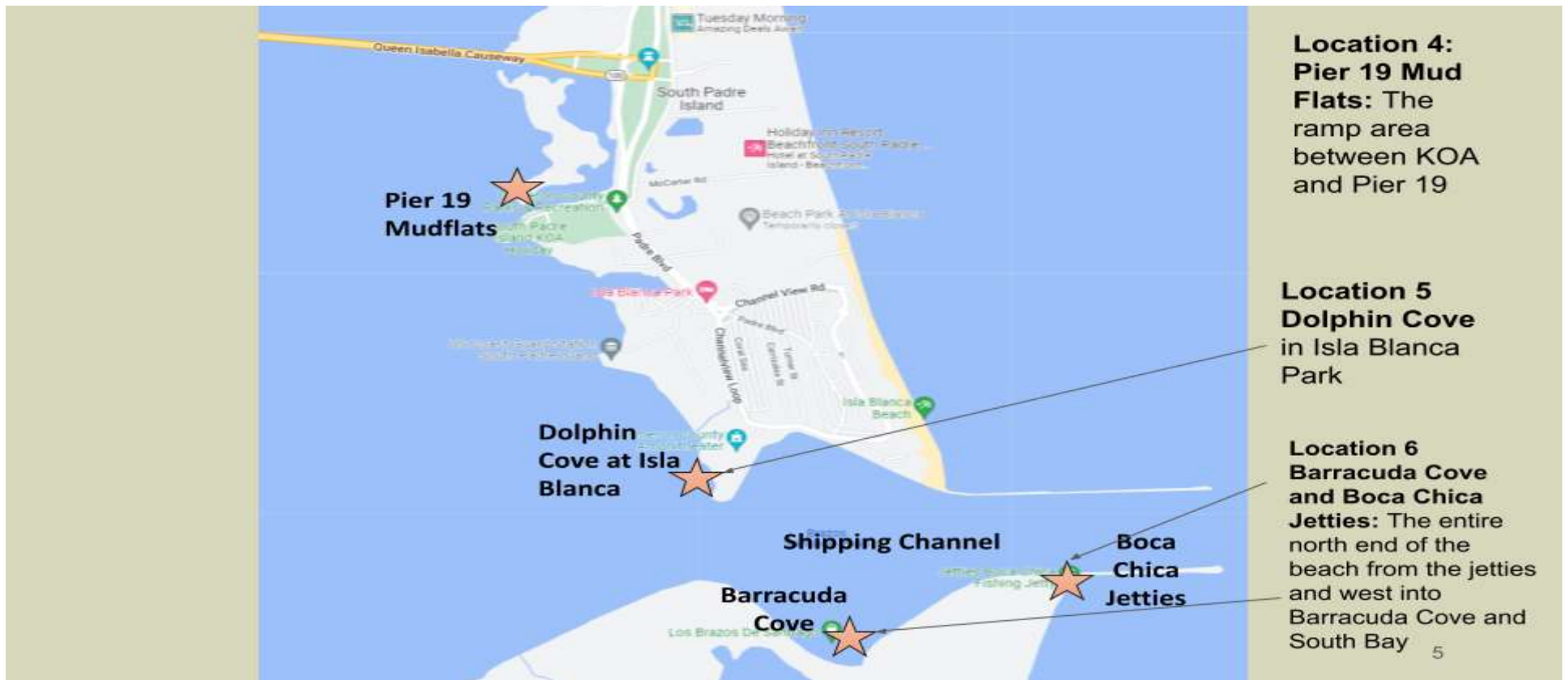
# Lower Laguna Madre Branch – Landside Recovery Team

## Area 5: Dolphin cove, Children’s beach, & Isla Blanca Jetties



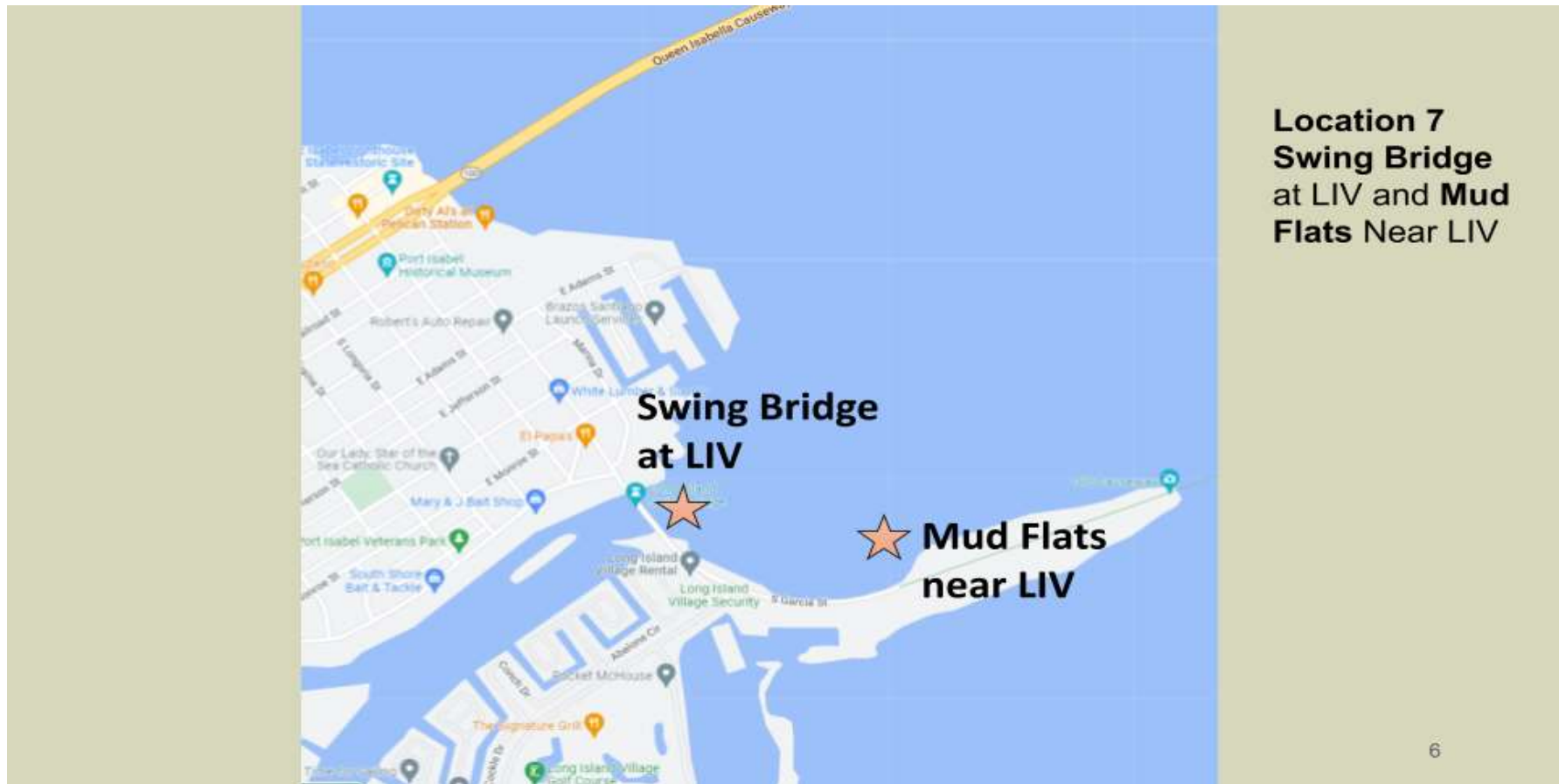
# Lower Laguna Madre Branch – Landside Recovery Team

## Area 6: Boca Chica Beach - Barracuda Cove and Boca Jetties

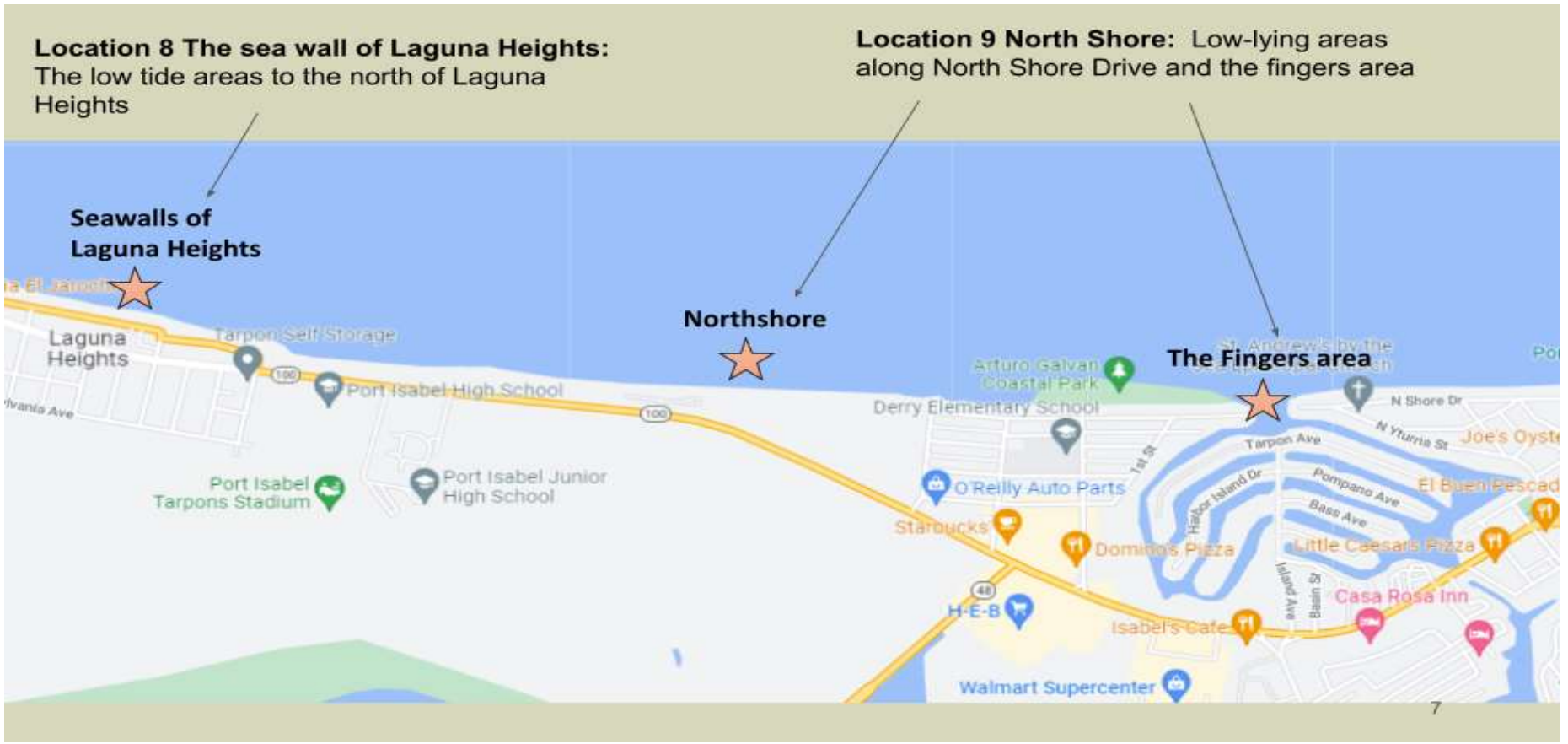


# Lower Laguna Madre Branch – Landside Recovery Team

## Area 7: Port Isabel- Swing bridge and mud flats near Long Island Village

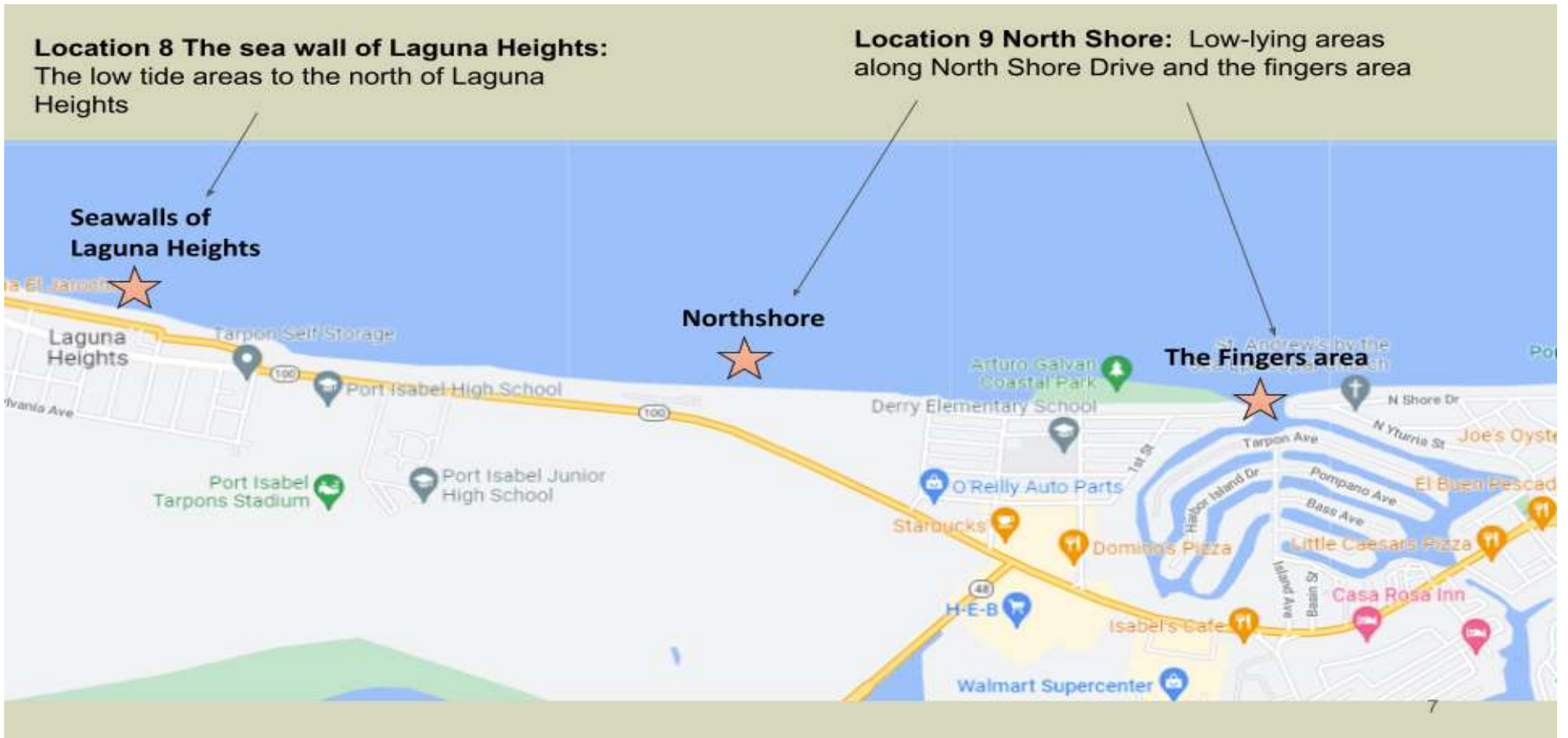


# Lower Laguna Madre Branch – Landside Recovery Team Area 8: Seawalls across Laguna Heights and into Laguna Vista



# Lower Laguna Madre Branch – Landside Recovery Team

## Area 9: Bayside areas of Northshore Drive and Port Isabel fingers



# Lower Laguna Madre Branch – Landside Recovery Team

## Area 10: Boat ramps along highway 48



# Upper Texas Coast Branch Waterside Recovery Team Patrol Areas

# Upper Texas Coast Branch – Waterside Recovery Team

## Area 1:

- Need to develop

# Mid-Texas Coast Branch Waterside Recovery Team Patrol Areas

Search areas include San Antonio Bay, Espiritu Santo Bay and the western portion of Matagorda Bay including Powderhorn Lake. Search areas are prioritized based on the incidence of known cold-stunned turtle strandings.

While these areas are labeled as boat routes, in many places volunteers get out and walk along shorelines, especially if they are in a bay boat which cannot get close to the shoreline due to low tide conditions. Only airboats can get up to the shoreline despite the shallow water.

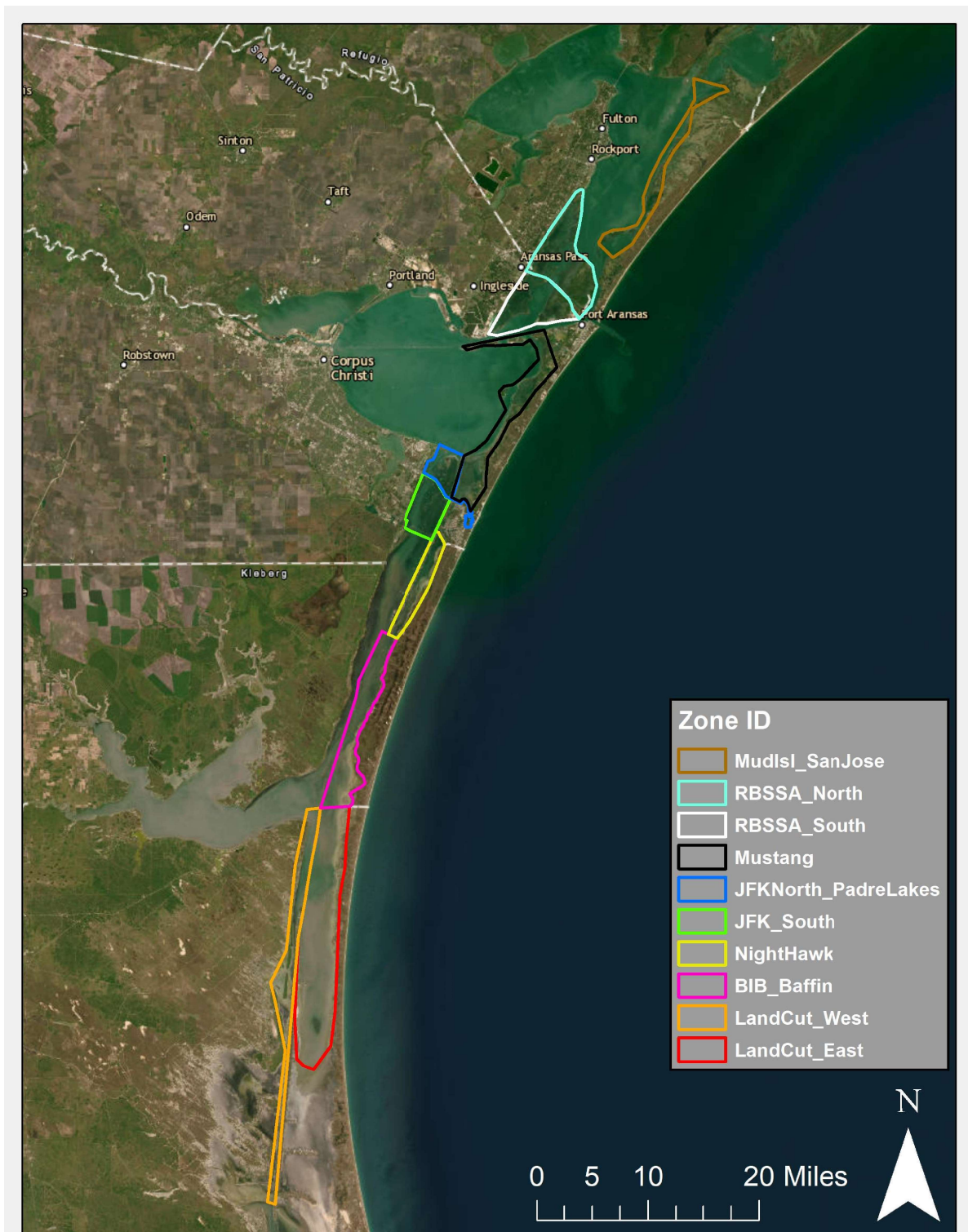
# Mid-Texas Coast Branch – Waterside Recovery Team Patrol Areas



Port Aransas Branch  
Waterside Recovery Team  
Patrol Areas

# Port Aransas Branch – Waterside Recovery Team

Mud Island to San Antonio Bay, Redfish Bay North, Redfish Bay South, Mustang Island, JFK North to Padre Island Lakes



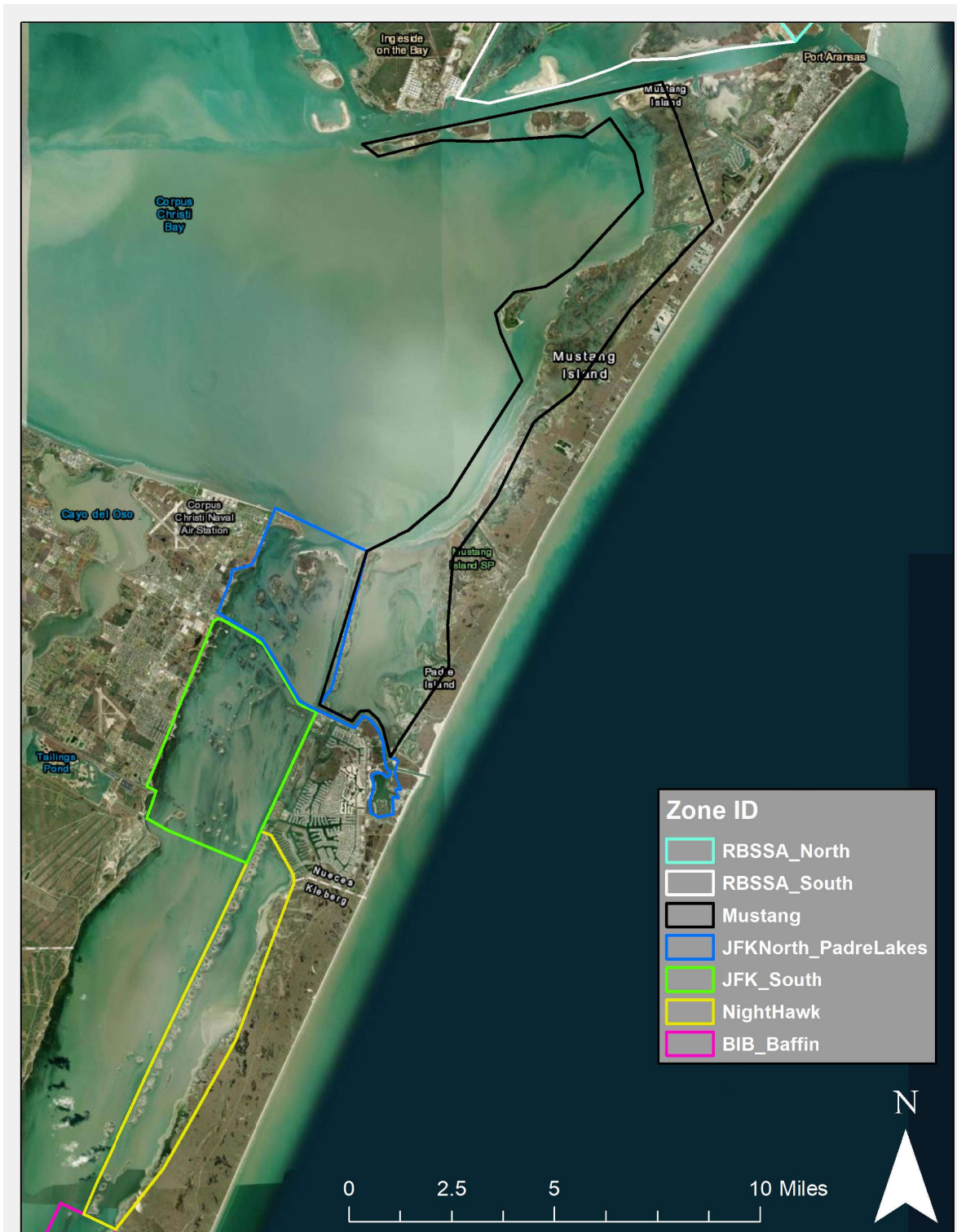
# Port Aransas Branch – Waterside Recovery Team

## Mud Island to San Antonio Bay, Redfish Bay North, Redfish Bay South



# Port Aransas Branch – Waterside Recovery Team

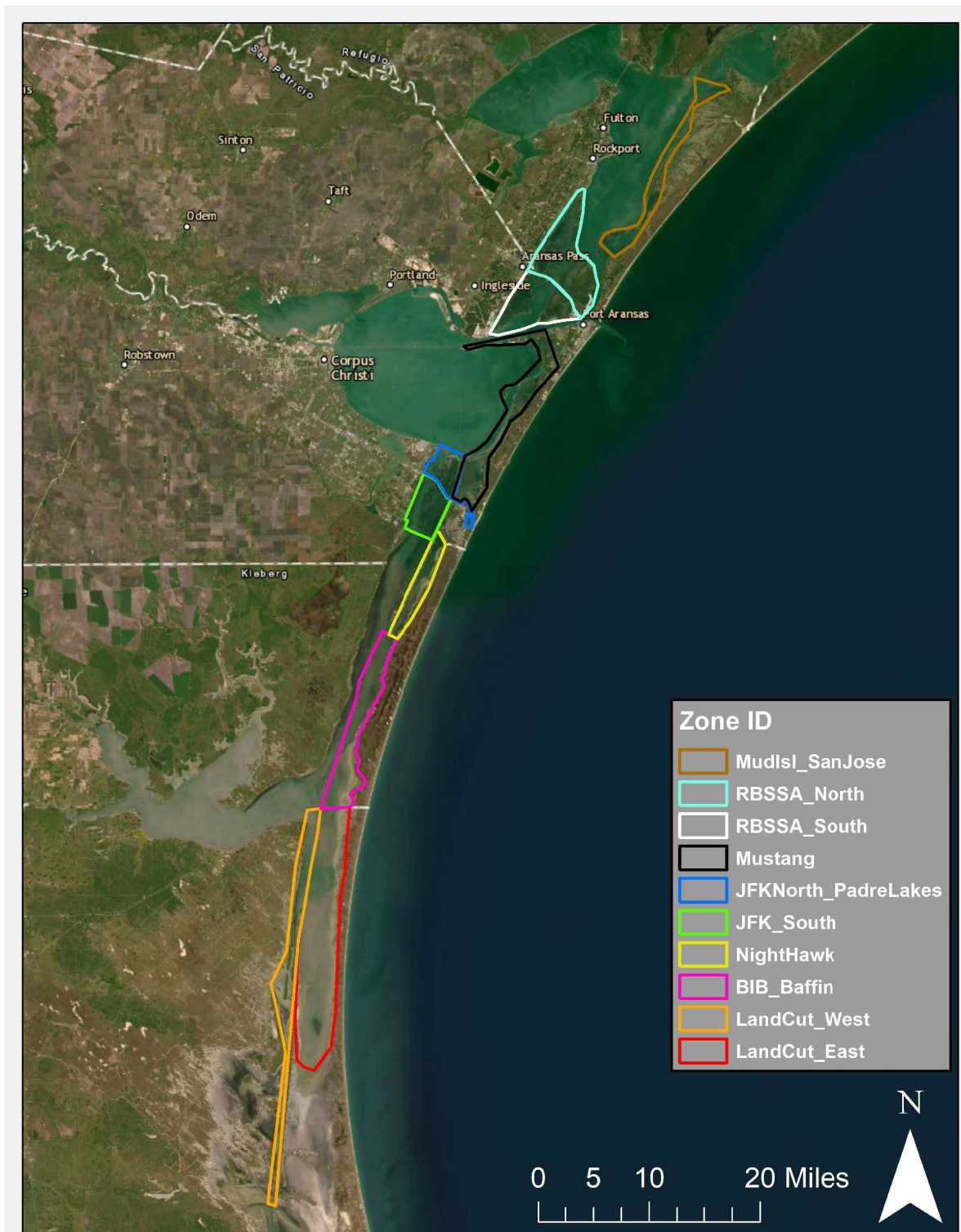
## Mustang Island, JFK North to Padre Island Lakes



# Upper Laguna Madre Branch Waterside Recovery Group Patrol Areas

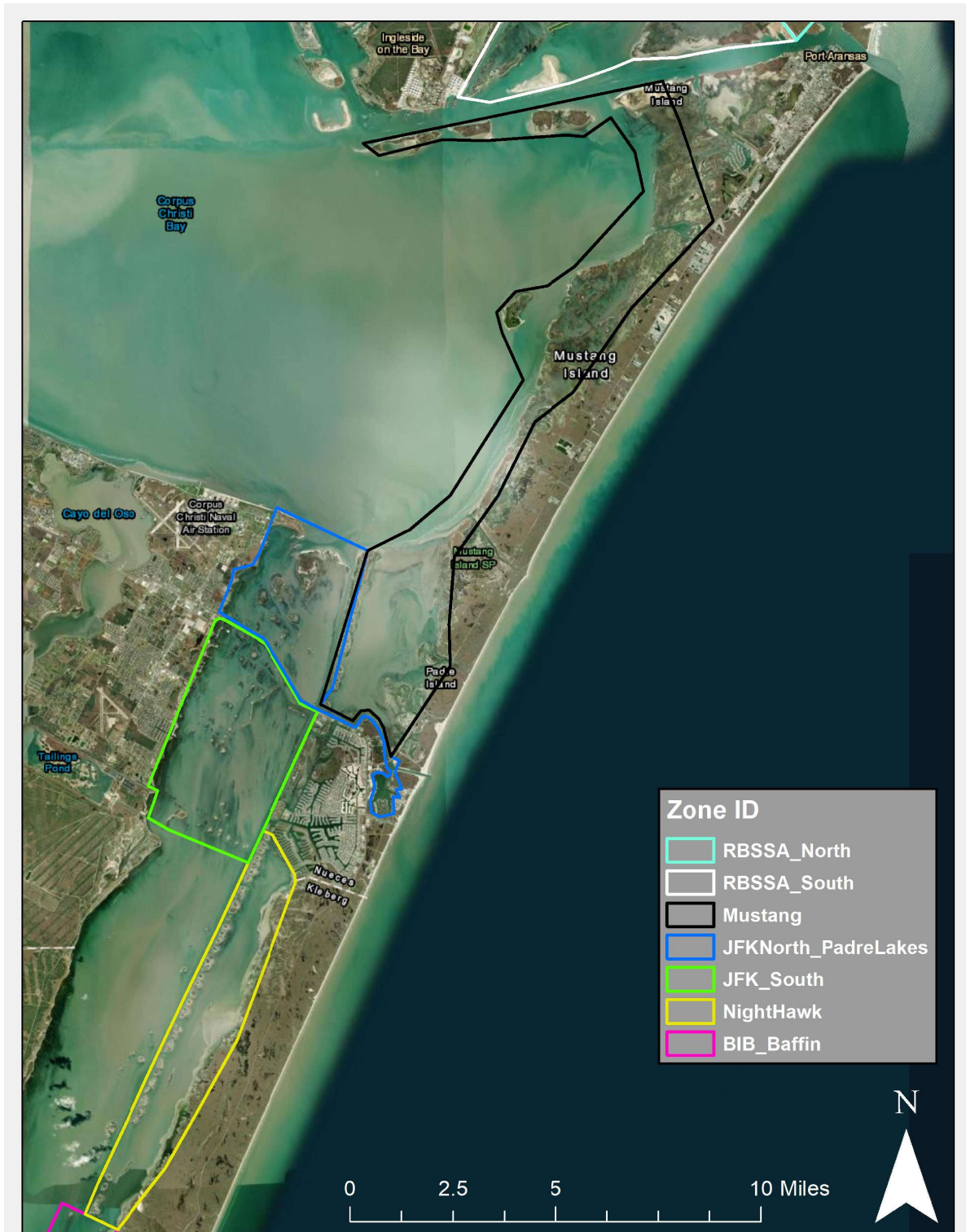
# Upper Laguna Madre Branch – Waterside Recovery Team

## JFK South, Nighthawk Bay, Bird Island Basin to Baffin Bay, Landcut West, Landcut East



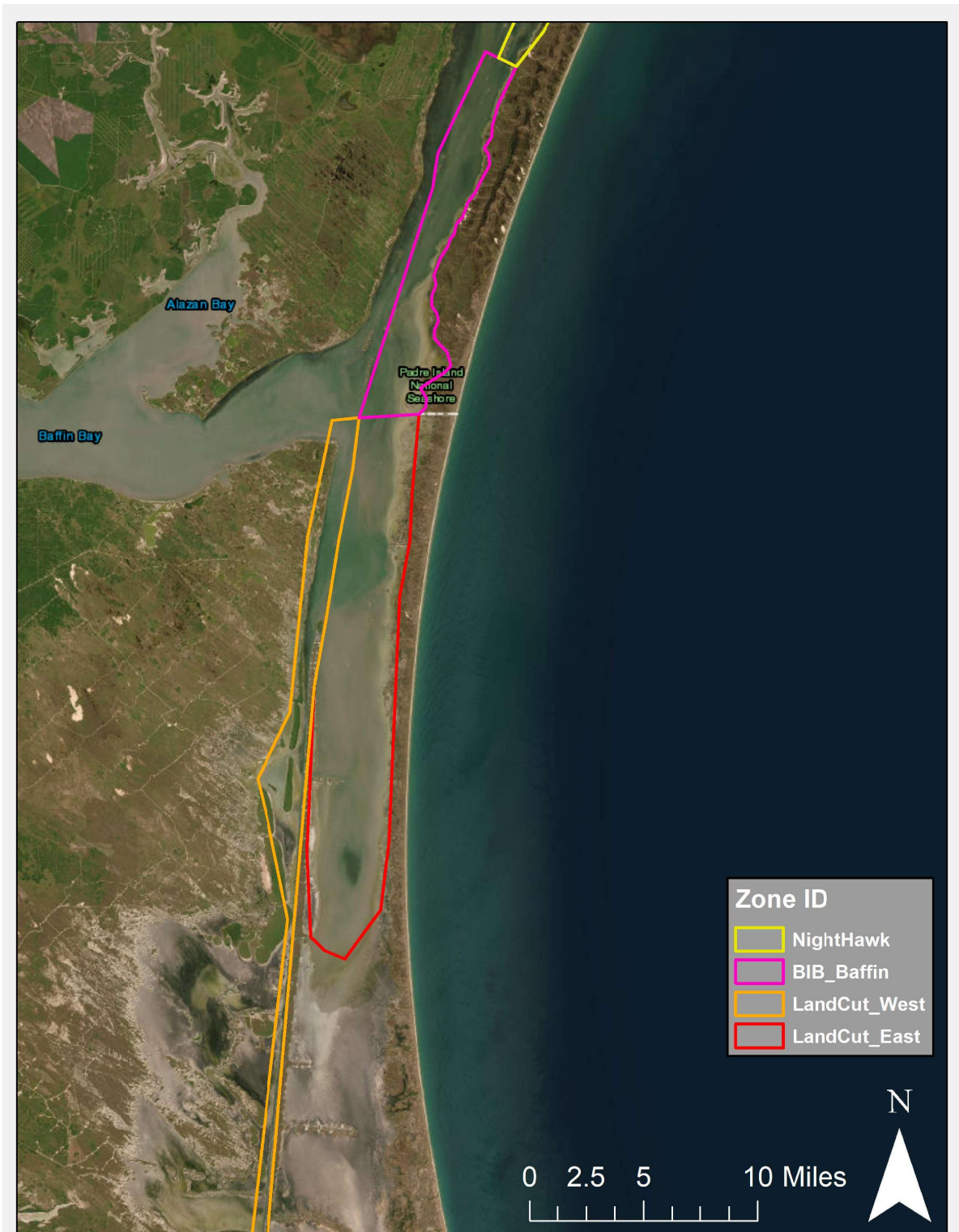
# Upper Laguna Madre Branch – Waterside Recovery Team

## JFK South, Nighthawk Bay, Bird Island Basin to Baffin Bay



# Upper Laguna Madre Branch – Waterside Recovery Team

## Nighthawk Bay, Bird Island Basin to Baffin Bay, Landcut West, Landcut East



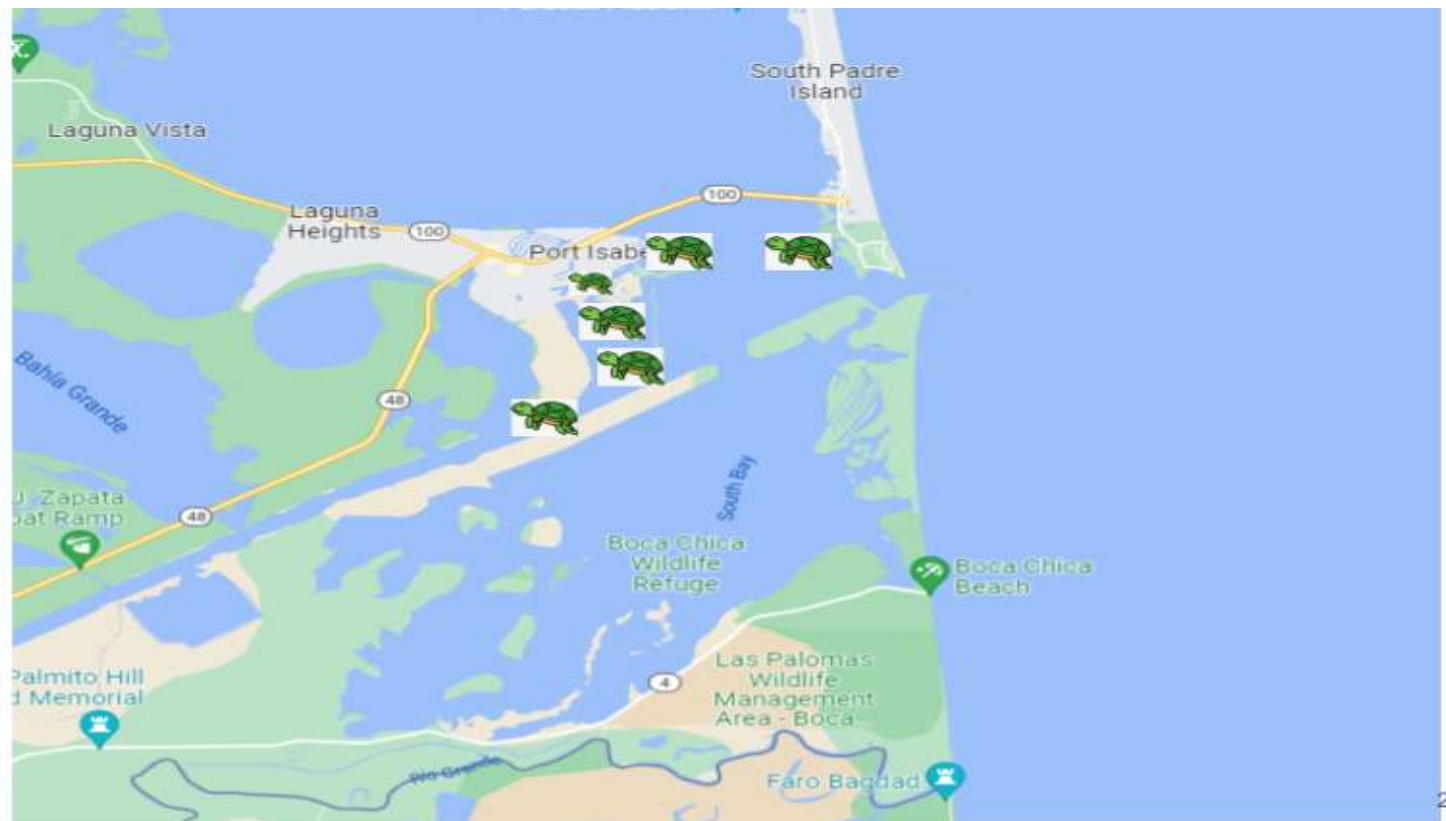
# Lower Laguna Madre Branch Waterside Recovery Group Patrol Areas

These include bayside areas throughout the lower laguna madre, including south and north of the causeway, into South Bay, the intercoastal waterway, north and south of Arroyo. Turtle icons indicate general areas.

# Lower Laguna Madre Branch – Waterside Recovery Team Area 1: South of Old Causeway

Location 1:

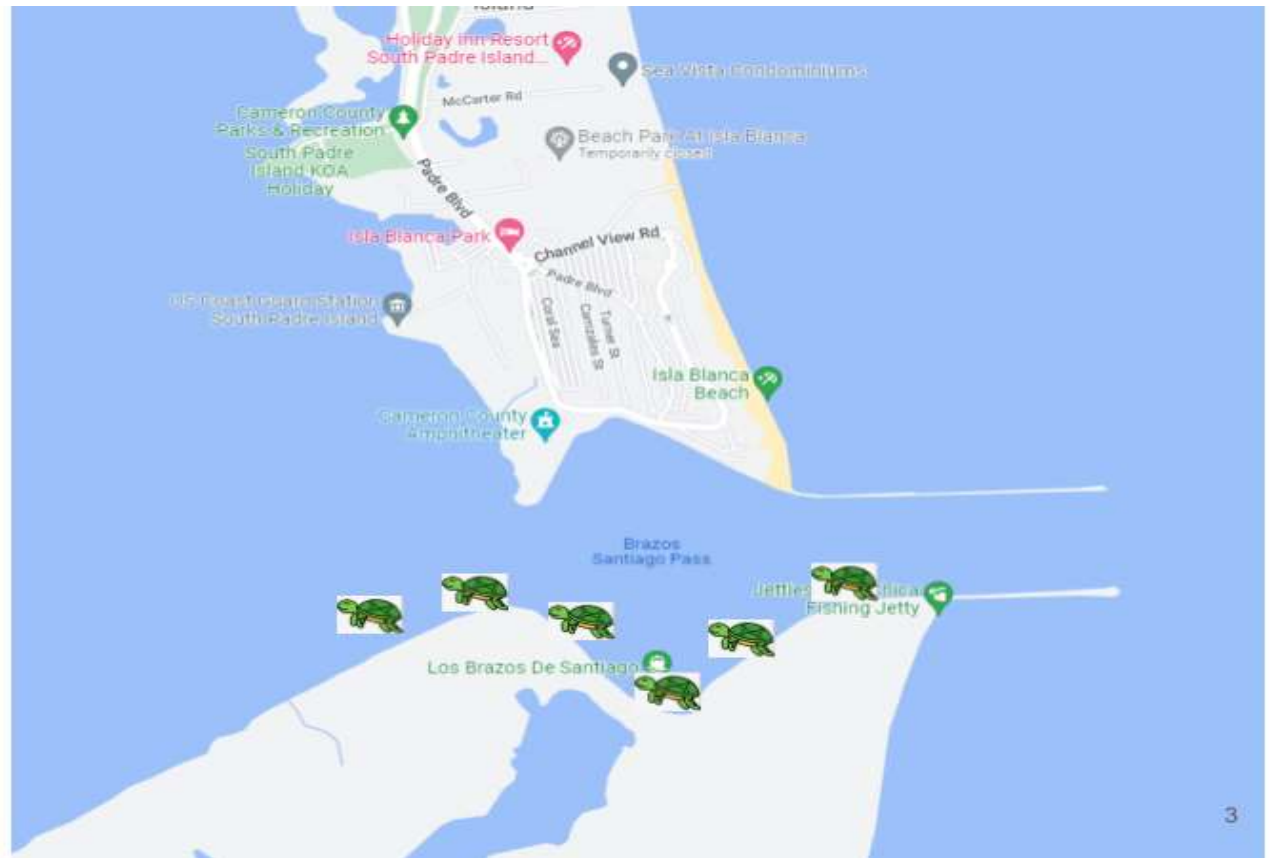
South of  
Old  
Causeway



2

# Lower Laguna Madre Branch – Waterside Recovery Team Area 2: Barracuda Cove

Location 2:  
Barracuda Cove



# Lower Laguna Madre Branch – Waterside Recovery Team Area 3: Laguna Vista / Port Isabel Shorelines

Location 3:  
Laguna Vista  
Shoreline/  
Port Isabel  
shoreline



# Lower Laguna Madre Branch – Waterside Recovery Team

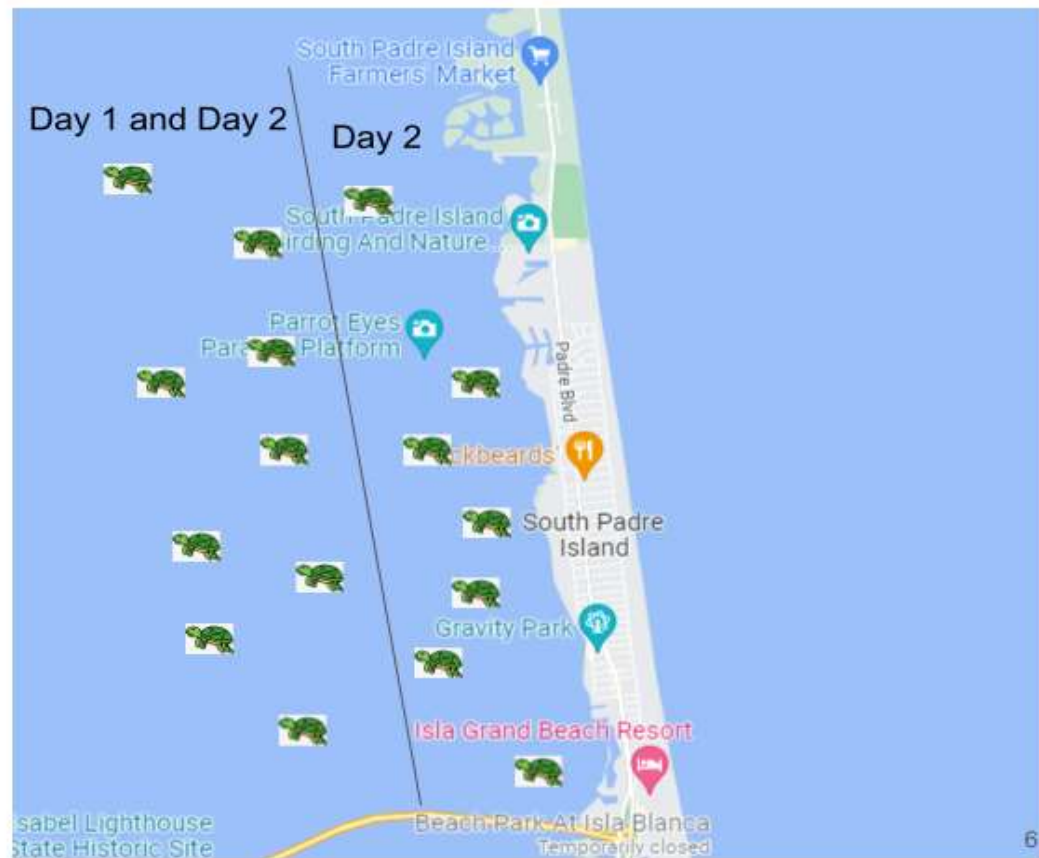
## Area 4: South Bay

Location 4:  
South Bay



# Lower Laguna Madre Branch – Waterside Recovery Team Area 5: South end of SPI from Causeway to Sea Turtle Inc.

Location 5:  
South end of SPI  
from Causeway to  
Sea Turtle Inc



# Lower Laguna Madre Branch – Waterside Recovery Team

## Area 6: North end of South Padre Island Convention Center to Adventure Park

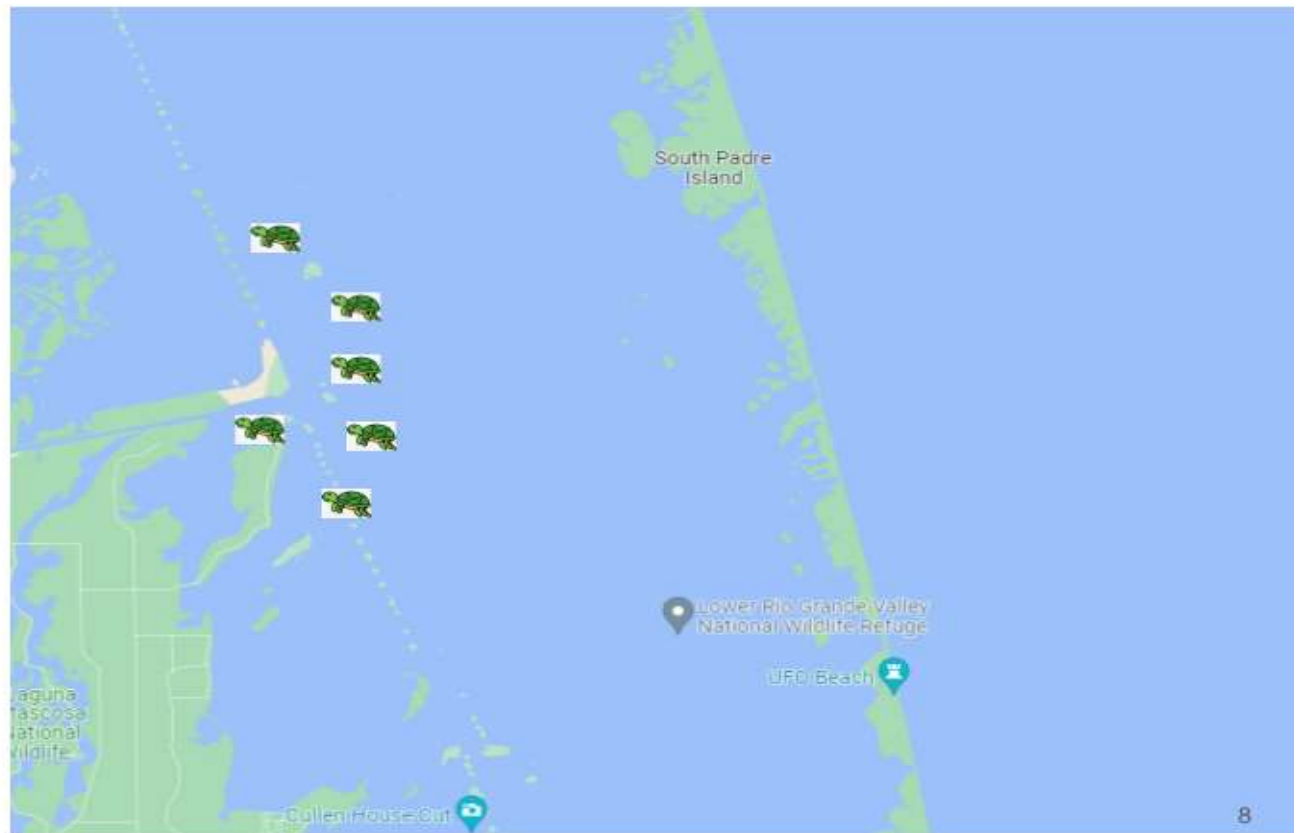
Location 6:  
North end of South  
Padre Island:  
Convention Center to  
Adventure Park



# Lower Laguna Madre Branch – Waterside Recovery Team

## Area 7: Arroyo Boat Ramp Area

Location 7:  
Arroyo Boat Ramp Area





DEPARTMENT OF HOMELAND SECURITY  
U.S. COAST GUARD

**COMMUNICATIONS LIST (ICS 205A-CG)**

<b>1. Incident Name:</b> MON-YY Sea Turtle Cold-Stunning Event	<b>2. Incident Location:</b>	<b>3. Operational Period (Date/Time):</b> From: DD MMM YY / TIME To: DD MMM YY / TIME
---	------------------------------	--

**4. Basic Local Communications Information:**

Assignment	Name	Methods of Contact		
		Phone #	Radio Frequency	Email / Other
Unified Command	Dr. Donna Shaver – TX STSSN Coordinator	C: (361) 834-9670 O: (361) 949-7608	PAIS N	Donna_Shaver@nps.gov Call sign: "800"
Unified Command	Mary Kay Skoruppa - USFWS	C: (346) 815-0009		Mary_Kay_Skoruppa@fws.gov
Unified Command	Dr. Brian Stacy - NOAA	C: (352) 283-3370 O: (352) 294-4098		Brian.Stacy@noaa.gov
Unified Command	Dakus Geeslin - TPWD	O: (512) 389-8734		Dakus.Geeslin@tpwd.texas.gov
Operations Section Chief	Heather Wilson - NOAA	C: (985) 768-9285		Heather.Wilson@noaa.gov
Upper Texas Coast Operations Branch Director	Dr. Christopher Marshall - Gulf Center for Sea Turtle Research	C: (409) 739-0021 O: (409) 740-4884		MarshalC@tamug.edu
Middle Coast Operations Branch Director	Brigid Berger - Mid-Coast Sea Turtle Rescue	C: (713) 825-1929		Midcoastseaturtlerescue@gmail.com
Por Aransas Operations Branch Director	Andrew Orgill - Amos Rehabilitation Keep (ARK)	C: (361) 510-7332 O: (361) 749-6793		Andrew.Orgill@austin.utexas.edu
Upper Laguna Madre Operations Branch Director	Martha Villalba-Guerra - National Park Service - Padre Island National Seashore	C: (956) 227-1691 O: (361) 949-0443	PAIS N	Martha_Villalba-Guerra@nps.gov Call sign: "804"
Lower Laguna Madre Operations Branch Director	Dr. Amy Bonka - Sea Turtle Inc.	C: (256) 328-4801 O: (956) 761-4511 x 107		Amy.Bonka@seaturtleinc.org
Planning Section Chief	Mike Griffin - Texas State Aquarium	C: (210) 274-2611 O: (361) 653-2602 O: (361) 881-1222		MGriffin@txstateaq.org WildliferescueOEM@txstateaq.org
Public Affairs Contacts:	Kelly Taylor - National Park Service - Padre Island National Seashore	C: (361) 949-1970 O: (361) 446-9074		Kelly_Taylor@nps.gov
	Aislinn Maestas - USFWS	C: (505) 331-9280		Aislinn_Maestas@fws.gov
	(NOAA)	C: () O: ()		
	TPWD Press Office	O: (512) 389-8030		Public.Information@tpwd.texas.gov
Rehabilitation Facilities:	Gulf Center for Sea Turtle Research	Theresa Morris O: (409) 740-4720		TLMorris@tamug.edu
	Amos Rehabilitation Keep (ARK)	Andrew Orgill C: (361) 510-7332		Andrew.Orgill@austin.utexas.edu
	Texas Sealife Center	Amanda Terry C: (281) 455-0477		Texassealifecenter@gmail.com
	Texas State Aquarium	Jesse Gilbert C: (361) 834-5450		JGilbert@txstateaq.org
	Sea Turtle Inc.	Dr. Amy Bonka C: (256) 328-4801		Amy.Bonka@seaturtleinc.org

DEPARTMENT OF HOMELAND SECURITY  
U.S. COAST GUARD

**COMMUNICATIONS LIST (ICS 205A-CG)**

<b>1. Incident Name:</b> MON-YY Sea Turtle Cold-Stunning Event	<b>2. Incident Location:</b>	<b>3. Operational Period (Date/Time):</b> From: DD MMM YY / TIME To: DD MMM YY / TIME
---	------------------------------	--

**4. Basic Local Communications Information:**

Assignment	Name	Methods of Contact		
		Phone #	Radio Frequency	Email / Other
Response Resources:	National Park Service - Padre Island National Seashore	Superintendent Eric Brunnemann O: (361) 949-9236		Eric_Brunnemann@nps.gov
	Texas Parks and Wildlife – Region 4, District 1 (Fort Bend, Wharton, Brazoria, Matagorda Counties)	Capt. Brandi Reeder C: (361) 790-2611		Brandi.Reeder@tpwd.texas.gov
	Texas Parks and Wildlife – Region 4, District 2 (Hardin, Liberty, Orange, Jefferson Counties)	Capt. Ryan Hall C: (409) 554-6697		Ryan.Hall@tpwd.texas.gov
	Texas Parks and Wildlife – Region 4, District 3 (Waller, Harris Counties)	Capt. Randy Button C: (832) 776-9775		Randy.Button@tpwd.texas.gov
	Texas Parks and Wildlife – Region 4, District 4 Chambers, Galveston Counties)	Capt. Fred Ruiz C: (409) 739-1947		Fred.Ruiz@tpwd.texas.gov
	Texas Parks and Wildlife – Region 8, District 1 (Lavaca, Dewitt, Victoria, Jackson, Calhoun Counties)	Capt. Chris Bird C: (979) 637-6608		Chris.Bird@tpwd.texas.gov
	Texas Parks and Wildlife – Region 8, District 2 (Goliad, Bee, Refugio, Aransas Counties)	Capt. Brent Tucker C: (361) 205-4459		Brent.Tucker@tpwd.texas.gov
	Texas Parks and Wildlife – Region 8, District 3 (Live Oak, San Patricio, Nueces Counties)	Capt. Wes Groth C: (512) 317-5929		Wesley.Groth@tpwd.texas.gov
	Texas Parks and Wildlife – Region 8, District 4 (Jim Wells, Kleberg, Brooks, Kenedy, Willacy Counties)	Capt. Chuck Ford C: (361) 215-3041		Chuck.Ford@tpwd.texas.gov
	Texas Parks and Wildlife – Region 8, District 5 (Hidalgo, Cameron Counties)	Capt. Chris Dowdy C: (254) 784-9066		Chris.Dowdy@tpwd.texas.gov
	Texas Parks and Wildlife –	Jake Harris		Jake.Harris@tpwd.texas.gov
	Texas General Land Office – (Nederland/Port Arthur, La Porte, Port Lavaca, Corpus Christi, and Brownsville Regional Offices)	Austin Dulany C: (361) 438-4914 O: (512) 475-1466		Austin.Dulany@glo.texas.gov
	U.S. Coast Guard – Sector Corpus Christi	CDR Jared Korn: C: (361) 438-0169 24/7 Command Center: (800) 874-2143		Jared.W.Korn@uscg.mil
	Sea World	Joe Keyon C: (210) 710-5633		Joe.Keyon@seaworld.com

DEPARTMENT OF HOMELAND SECURITY  
U.S. COAST GUARD

**COMMUNICATIONS LIST (ICS 205A-CG)**

<b>1. Incident Name:</b> MON-YY Sea Turtle Cold-Stunning Event	<b>2. Incident Location:</b>	<b>3. Operational Period (Date/Time):</b> From: DD MMM YY / TIME To: DD MMM YY / TIME
---	------------------------------	--

**4. Basic Local Communications Information:**

Assignment	Name	Methods of Contact		
		Phone #	Radio Frequency	Email / Other
	Coastal Bend Bays & Estuaries Program	David Newstead O: (361) 336-0312		DNewstead@cbbep.org
	Keep Aransas County Beautiful	Kathy Cima C: ()		KCson@hotmail.com
	Sea Tow	Brandon Upton C: (361) 548-4773		CorpusChristi@seatow.com
	Nueces County – Director of Coastal Parks	Scott Cross O: (361) 949-8122 C: (361) 877-1386		Scott.Cross@nuecescountytx.gov
	Texas A&M Autonomy Research Institute – Tye Payne	Tye Payne: C: (361) 885-1995 O: (361) 825-4107		Tye.Payne@tamucc.edu
	Texas Search and Rescue – Director of Field Operations	Jeff Conrad C: (832) 588-1461		Jeff.Conrad@texsar.org
	USFWS – Assistant Field Supervisor	Catrina Martin C: (361) 533-6765		Catrina_Martin@fws.gov
	USFWS – Fish and Wildlife Biologist	Cynthia Rubio C: (832) 205-7397		Cynthia_Rubio@fws.gov
	USFWS – Coastal Program Biologist and Boat Operator	Adriana Leiva C: (281) 898-5686		Adriana_Leiva@fws.gov
	USFWS – Special Agent and Boat Operator	S/A Rob Gardner C: (469) 496-0849		Robert_Gardner@fws.gov
PAIS Dispatch	PAIS Dispatch PAIS L/E	(361) 666-1894	PAIS N PAIS N	Call Sign: "700" Call Sign: "200"

**5. Prepared by:**

Name: Mike Griffin	Position Title: Planning Section Chief	Signature:	Date/Time: DD MMM YY / TIME
-----------------------	---	------------	--------------------------------

ICS 205A-CG (07/21)

Page \_\_\_ of \_\_\_



DEPARTMENT OF HOMELAND SECURITY  
U.S. COAST GUARD

**MEDICAL PLAN (ICS 206-CG)**

<b>1. Incident Name:</b> MON-YY Sea Turtle Cold Stunning Event	<b>2. Incident Location:</b> Upper Texas Coast Branch	<b>3. Operational Period (Date/Time):</b> From: DD MMM YY / TIME To: DD MMM YY / TIME
---	--	--

<b>4. Medical Aid Stations:</b>			
Name	Location	Contact Information	Paramedics Onsite?
<b>No Medical Aid Stations Are Available On Site</b>	<b>Seek Medical Attention At Local Emergency Room</b>	<b>911</b>	<input type="checkbox"/> Yes <input checked="" type="checkbox"/> No

<b>5. Transportation:</b>			
Ambulance Service	Location	Contact Information	Level of Service
Galveston County Health District EMS	9850 D Emmett F Lowry Exp. Texas City, TX 77591	<b>911</b> / (409) 765-2524 non-emergency	<input checked="" type="checkbox"/> ALS <input type="checkbox"/> BLS
Chambers County EMS	102 Airport Rd. Anahuac, TX 77514	<b>911</b> / (409) 267-2445 non-emergency	<input checked="" type="checkbox"/> ALS <input type="checkbox"/> BLS

<b>6. Hospitals:</b>							
Name	Address Lat/Long if Helipad	Contact Information	Travel Time		Trauma Center	Burn Center	Helipad
			Air	Ground			
John Sealy Hospital	301 8th St. Galveston, TX 77550	(409) 772-1011			<input type="checkbox"/> Yes Level: I	<input type="checkbox"/> Yes <input checked="" type="checkbox"/> No	<input checked="" type="checkbox"/> Yes <input type="checkbox"/> No
HCA Houston Healthcare – Mainland	6801 Emmett F Lowry Exp. Texas City, TX 77591	(409) 938-5000			<input type="checkbox"/> Yes Level: III	<input type="checkbox"/> Yes <input checked="" type="checkbox"/> No	<input checked="" type="checkbox"/> Yes <input type="checkbox"/> No
Bayside Community Hospital	200 Hospital Dr. Anahuac, TX 77514	(409) 267-3143			<input type="checkbox"/> Yes Level: IV	<input type="checkbox"/> Yes <input checked="" type="checkbox"/> No	<input type="checkbox"/> Yes <input checked="" type="checkbox"/> No
					<input type="checkbox"/> Yes Level: __	<input type="checkbox"/> Yes <input type="checkbox"/> No	<input type="checkbox"/> Yes <input type="checkbox"/> No

<b>7. Special Medical Emergency Procedures:</b> - In the event of a Medical Emergency contact 911.
---

<b>8. Prepared by:</b>	Name: Mike Griffin	Position: Planning Section Chief	Signature:
------------------------	--------------------	----------------------------------	------------

<b>9. Reviewed by:</b>			
Name:	Position Title:	Signature:	Date/Time:

ICS 206-CG (07/21)

DEPARTMENT OF HOMELAND SECURITY  
U.S. COAST GUARD

**MEDICAL PLAN (ICS 206-CG)**

<b>1. Incident Name:</b> MON-YY Sea Turtle Cold-Stunning Event	<b>2. Incident Location:</b> Mid Texas Coast Branch	<b>3. Operational Period (Date/Time):</b> From: DD MMM YY / TIME To: DD MMM YY / TIME
---	--	--

<b>4. Medical Aid Stations:</b>			
Name	Location	Contact Information	Paramedics Onsite?
<b>No Medical Aid Stations Are Available On Site</b>	<b>Seek Medical Attention At Local Emergency Room</b>	<b>911</b>	<input type="checkbox"/> Yes <input checked="" type="checkbox"/> No

<b>5. Transportation:</b>			
Ambulance Service	Location	Contact Information	Level of Service
Calhoun County EMS	705 Henry Barber Way Port Lavaza, TX 77979	<b>911</b> / (361) 552-1140 non-emergency	<input checked="" type="checkbox"/> ALS <input type="checkbox"/> BLS
Victoria Fire Department / EMS	705 West Avenue A Port Aransas, TX 78373	<b>911</b> / (361) 485-3450 non-emergency	<input checked="" type="checkbox"/> ALS <input type="checkbox"/> BLS
Matagorda County EMS	2900 Hamman Rd. Bay City, TX 77414	<b>911</b> / (979) 244-0911 non-emergency	<input checked="" type="checkbox"/> ALS <input type="checkbox"/> BLS
Coast Guard Helicopter Medevac – Air Ambulance	249 Glasson Drive Corpus Christi, TX 78406	(866) 302-0587 (SAR Line)	<input type="checkbox"/> ALS <input checked="" type="checkbox"/> BLS

<b>6. Hospitals:</b>							
Name	Address Lat/Long if Helipad	Contact Information	Travel Time		Trauma Center	Burn Center	Helipad
			Air	Ground			
Memorial Medical Center	815 N. Virginia St. Port Lavaca, TX 77979	(361) 552-6713			<input type="checkbox"/> Yes Level: IV	<input type="checkbox"/> Yes <input checked="" type="checkbox"/> No	<input type="checkbox"/> Yes <input checked="" type="checkbox"/> No
Palacios Community Medical Center	311 Green Ave. Palacios, TX 77465	(361) 972-2511			<input type="checkbox"/> Yes Level:	<input type="checkbox"/> Yes <input checked="" type="checkbox"/> No	<input checked="" type="checkbox"/> Yes <input type="checkbox"/> No
DeTar Hospital Navarro	506 E. San Antonio St. Victoria, TX 77901	(361) 575-7441			<input type="checkbox"/> Yes Level: III	<input type="checkbox"/> Yes <input checked="" type="checkbox"/> No	<input checked="" type="checkbox"/> Yes <input type="checkbox"/> No
					<input type="checkbox"/> Yes Level:___	<input type="checkbox"/> Yes <input type="checkbox"/> No	<input type="checkbox"/> Yes <input type="checkbox"/> No

<b>7. Special Medical Emergency Procedures:</b> - In the event of a Medical Emergency contact 911.
---

<b>8. Prepared by:</b>	Name: Mike Griffin	Position: Planning Section Chief	Signature:
------------------------	--------------------	----------------------------------	------------

<b>9. Reviewed by:</b>			
Name:	Position Title:	Signature:	Date/Time:

DEPARTMENT OF HOMELAND SECURITY  
U.S. COAST GUARD

**MEDICAL PLAN (ICS 206-CG)**

<b>1. Incident Name:</b> MON-YY Sea Turtle Cold-Stunning Event	<b>2. Incident Location:</b> Port Aransas Branch	<b>3. Operational Period (Date/Time):</b> From: DD MMM YY / TIME To: DD MMM YY / TIME
---	---	--

<b>4. Medical Aid Stations:</b>			
Name	Location	Contact Information	Paramedics Onsite?
<b>No Medical Aid Stations Are Available On Site</b>	<b>Seek Medical Attention At Local Emergency Room</b>	<b>911</b>	<input type="checkbox"/> Yes <input checked="" type="checkbox"/> No

<b>5. Transportation:</b>			
Ambulance Service	Location	Contact Information	Level of Service
Port Aransas EMS	705 West Avenue A Port Aransas, TX 78373	911 / 361-749-4405 non-emergency	<input checked="" type="checkbox"/> ALS <input type="checkbox"/> BLS
Corpus Christi Fire Department/EMS	Corpus Christi, TX	911 / (361) 886-2600 non-emergency	<input checked="" type="checkbox"/> ALS <input type="checkbox"/> BLS
HALO Flight – Air Ambulance	1843 FM 665 Corpus Christi, TX 78415	(800) 776-4256 / Office: (361) 265-0509	<input checked="" type="checkbox"/> ALS <input type="checkbox"/> BLS
Coast Guard Helicopter Medevac – Air Ambulance	249 Glasson Drive Corpus Christi, TX 78406	(866) 302-0587 (SAR Line)	<input type="checkbox"/> ALS <input checked="" type="checkbox"/> BLS

<b>6. Hospitals:</b>							
Name	Address Lat/Long if Helipad	Contact Information	Travel Time		Trauma Center	Burn Center	Helipad
			Air	Ground			
Christus Spohn - Shoreline	600 Elizabeth St. Corpus Christi, TX 78404	(361) 881-3000			<input type="checkbox"/> Yes Level: <u>II</u>	<input type="checkbox"/> Yes <input checked="" type="checkbox"/> No	<input checked="" type="checkbox"/> Yes <input type="checkbox"/> No
Corpus Christi Medical Center - Doctors Regional	3315 South Alameda St. Corpus Christi, TX 78411	(361) 761-1467			<input type="checkbox"/> Yes Level: <u>IV</u>	<input type="checkbox"/> Yes <input checked="" type="checkbox"/> No	<input checked="" type="checkbox"/> Yes <input type="checkbox"/> No
Corpus Christi Medical Center - Bay Area	7101 S Padre Island Dr Corpus Christi, TX 78412	(361) 761-3637			<input type="checkbox"/> Yes Level: <u>II</u>	<input type="checkbox"/> Yes <input checked="" type="checkbox"/> No	<input checked="" type="checkbox"/> Yes <input type="checkbox"/> No
Christus Spohn - South	5950 Saratoga Blvd. Corpus Christi, TX 78414	(361) 985-5811			<input type="checkbox"/> Yes Level: <u>IV</u>	<input type="checkbox"/> Yes <input checked="" type="checkbox"/> No	<input checked="" type="checkbox"/> Yes <input type="checkbox"/> No

<b>7. Special Medical Emergency Procedures:</b>			
- In the event of a Medical Emergency contact 911.			

<b>8. Prepared by:</b>	Name: Mike Griffin	Position: Planning Section Chief	Signature:
------------------------	--------------------	----------------------------------	------------

<b>9. Reviewed by:</b>			
------------------------	--	--	--

Name:	Position Title:	Signature:	Date/Time:
-------	-----------------	------------	------------

DEPARTMENT OF HOMELAND SECURITY  
U.S. COAST GUARD  
**MEDICAL PLAN (ICS 206-CG)**

<b>1. Incident Name:</b> MON-YY Sea Turtle Cold-Stunning Event	<b>2. Incident Location:</b> Upper Laguna Madre Branch	<b>3. Operational Period (Date/Time):</b> From: DD MMM YY / TIME To: DD MMM YY / TIME
---	---	--

<b>4. Medical Aid Stations:</b>			
Name	Location	Contact Information	Paramedics Onsite?
<b>No Medical Aid Stations Are Available On Site</b>	<b>Seek Medical Attention At Local Emergency Room</b>	<b>911</b>	<input type="checkbox"/> Yes <input checked="" type="checkbox"/> No

<b>5. Transportation:</b>			
Ambulance Service	Location	Contact Information	Level of Service
Corpus Christi Fire Department/EMS	Corpus Christi, TX	911 / (361) 886-2600 non-emergency	<input checked="" type="checkbox"/> ALS <input type="checkbox"/> BLS
Port Aransas EMS	705 West Avenue A Port Aransas, TX 78373	911 / 361-749-4405 non-emergency	<input checked="" type="checkbox"/> ALS <input type="checkbox"/> BLS
HALO Flight – Air Ambulance	1843 FM 665 Corpus Christi, TX 78415	(800) 776-4256 / Office: (361) 265-0509	<input checked="" type="checkbox"/> ALS <input type="checkbox"/> BLS
Coast Guard Helicopter Medevac – Air Ambulance	249 Glasson Drive Corpus Christi, TX 78406	(866) 302-0587 (SAR Line)	<input type="checkbox"/> ALS <input checked="" type="checkbox"/> BLS

<b>6. Hospitals:</b>							
Name	Address Lat/Long if Helipad	Contact Information	Travel Time		Trauma Center	Burn Center	Helipad
			Air	Ground			
Christus Spohn - Shoreline	600 Elizabeth St. Corpus Christi, TX 78404	(361) 881-3000			<input type="checkbox"/> Yes Level: <u>II</u>	<input type="checkbox"/> Yes <input checked="" type="checkbox"/> No	<input checked="" type="checkbox"/> Yes <input type="checkbox"/> No
Corpus Christi Medical Center - Doctors Regional	3315 South Alameda St. Corpus Christi, TX 78411	(361) 761-1467			<input type="checkbox"/> Yes Level: <u>IV</u>	<input type="checkbox"/> Yes <input checked="" type="checkbox"/> No	<input checked="" type="checkbox"/> Yes <input type="checkbox"/> No
Corpus Christi Medical Center - Bay Area	7101 S Padre Island Dr Corpus Christi, TX 78412	(361) 761-3637			<input type="checkbox"/> Yes Level: <u>II</u>	<input type="checkbox"/> Yes <input checked="" type="checkbox"/> No	<input checked="" type="checkbox"/> Yes <input type="checkbox"/> No
Christus Spohn - South	5950 Saratoga Blvd. Corpus Christi, TX 78414	(361) 985-5811			<input type="checkbox"/> Yes Level: <u>IV</u>	<input type="checkbox"/> Yes <input checked="" type="checkbox"/> No	<input checked="" type="checkbox"/> Yes <input type="checkbox"/> No

<b>7. Special Medical Emergency Procedures:</b>
- In the event of a Medical Emergency contact 911. If unable due to inadequate cell phone reception, contact Call "200" on Park Channel "PAIS N".
- Malaquite Visitor Center Parking Lot is an approved Helispot.

<b>8. Prepared by:</b>	Name: Mike Griffin	Position: Planning Section Chief	Signature:
------------------------	--------------------	----------------------------------	------------

<b>9. Reviewed by:</b>			
Name:	Position Title:	Signature:	Date/Time:

DEPARTMENT OF HOMELAND SECURITY  
U.S. COAST GUARD

**MEDICAL PLAN (ICS 206-CG)**

<b>1. Incident Name:</b> MON-YY Sea Turtle Cold-Stunning Event	<b>2. Incident Location:</b> Lower Laguna Madre Branch	<b>3. Operational Period (Date/Time):</b> From: DD MMM YY / TIME To: DD MMM YY / TIME
---	---	--

**4. Medical Aid Stations:**

Name	Location	Contact Information	Paramedics Onsite?
<b>No Medical Aid Stations Are Available On Site</b>	<b>Seek Medical Attention At Local Emergency Room</b>	<b>911</b>	<input type="checkbox"/> Yes <input checked="" type="checkbox"/> No

**5. Transportation:**

Ambulance Service	Location	Contact Information	Level of Service
South Padre Island Fire Department/EMS	106 W. Retama St. South Padre Island, TX 78597	<b>911</b> / (956) 761-3040 non-emergency	<input checked="" type="checkbox"/> ALS <input type="checkbox"/> BLS
Port Isabel EMS	705 West Avenue A Port Aransas, TX 78373	<b>911</b> / (956) 943-2682 non-emergency	<input checked="" type="checkbox"/> ALS <input type="checkbox"/> BLS
			<input type="checkbox"/> ALS <input type="checkbox"/> BLS
Coast Guard Helicopter Medevac – Air Ambulance	249 Glasson Drive Corpus Christi, TX 78406	(866) 302-0587 (SAR Line)	<input type="checkbox"/> ALS <input checked="" type="checkbox"/> BLS

**6. Hospitals:**

Name	Address Lat/Long if Helipad	Contact Information	Travel Time		Trauma Center	Burn Center	Helipad
			Air	Ground			
Valley Regional Medical Center	100 E. Alton Gloor Blvd. Brownsville, TX 78526	(956) 350-7000			<input type="checkbox"/> Yes Level: _III	<input type="checkbox"/> Yes <input checked="" type="checkbox"/> No	<input type="checkbox"/> Yes <input checked="" type="checkbox"/> No
Valley Baptist Medical Center	2101 Pease St. Harlingen, TX 78550	(956) 389-1100			<input type="checkbox"/> Yes Level: _II	<input type="checkbox"/> Yes <input checked="" type="checkbox"/> No	<input checked="" type="checkbox"/> Yes <input type="checkbox"/> No
					<input type="checkbox"/> Yes Level: ___	<input type="checkbox"/> Yes <input checked="" type="checkbox"/> No	<input checked="" type="checkbox"/> Yes <input type="checkbox"/> No
					<input type="checkbox"/> Yes Level: ___	<input type="checkbox"/> Yes <input checked="" type="checkbox"/> No	<input checked="" type="checkbox"/> Yes <input type="checkbox"/> No

**7. Special Medical Emergency Procedures:**

- In the event of a Medical Emergency contact 911.

<b>8. Prepared by:</b>	Name: Mike Griffin	Position: Planning Section Chief	Signature:
<b>9. Reviewed by:</b>			
Name:	Position Title:	Signature:	Date/Time:

# Incident Action Plan

## Health and Safety Message

<b>Incident Name:</b> MON-YY Sea Turtle Cold-Stunning Event	<b>Date Prepared:</b>	<b>Time Prepared:</b>
<b>Operational Period Time:</b> From: DD MMM YY / TIME To: DD MMM YY / TIME		

**Major Hazards and Risks:**

Weather: Prolonged exposure to cold temperatures may result in hypothermia or abnormally low body temperature. Follow your own agency or organization's policies for cold weather and use of personal protective equipment.

High Winds, Seas, and Surf: Following the passage of a cold front, there is an anticipated risk of high winds, seas, and possible small craft advisory. Follow your own agency or organization policies for operational parameters.

Slips, Trips, and Falls: All personnel need to be aware of their surroundings to limit slips, trips, and falls especially from the increased risk from working in a wet environment. Know your surroundings.

Cuts, Scrapes, and Punctures: During field operations, personnel need to wear appropriate protective equipment, including closed toed shoes and gloves to reduce the risk of cuts, scrapes, and punctures. Gloves are required when handling sea turtles per Texas Sea Turtle Stranding and Cold-Stunning Procedures.

Lifting: Take care not to injure your back while lifting heavy sea turtles. All personnel will follow safe lifting practices, lift with your knees, not with your back. Request assistance when handling large sea turtles. See Texas Sea Turtle Stranding and Cold-Stunning Procedures for proper lifting and handling techniques.

Animal Handling: Proper sea turtle handling techniques are vital to ensure the safety of the animal and the responder. Fractures have been detected in the humerus bones of recovered sea turtles, possibly a result of improper handling techniques (i.e. grasping turtles by their flippers or allowing turtles to flap their flippers vigorously). Smaller turtles should be handled by grasping the outer edges of the carapace and support provided to the head, neck, and flippers whenever possible. Large animals should be handled by at least two individuals, each grasping an anterior and posterior portion of the carapace, or within an open tote or container. See Texas Sea Turtle Stranding and Cold-Stunning Procedures for proper lifting and handling techniques.

Fatigue: Fatigue is defined as extreme tiredness resulting from mental or physical exertion or illness. In simple terms, it is the feeling of being tired or exhausted. Get rest during off hours and take breaks.

Working Near Water: All personnel shall wear personal flotation device when working on, over, or near water when there are no mechanical controls in place (i.e. handrails).

Motor Vehicles: Safely operate vehicles according to state laws and according to the weather. Follow your agency or organization policies on the use of cell phones while driving.

Beach Driving: Follow safe driving techniques while driving on beaches. Beaches may have obstacles, loose and deep sand, or debris that impact driving.

**Narrative:**

Safety of responders is paramount. Responders shall follow their own agency or organization's operational safety guidelines and employ operational risk management principles.

An Operational Risk Management example is included as an attachment.

If an injury does occur, follow the ICS-206 Medical Plan and your agency or organization policy.

<b>Prepared By:</b> Mike Griffin	<b>Position:</b> Planning Section Chief	<b>Date/Time</b> DD MMM YY / TIME
<b>Approved By:</b> Heather Wilson	<b>Position:</b> Operations Section Chief	<b>Date/Time</b> DD MMM YY / TIME

# U.S. Coast Guard Operations Risk Assessment

**Mission:** \_\_\_\_\_

**Date:** \_\_\_\_\_

## Step 1: Identify, Assess, & Mitigate Risk Elements

**Instructions:** To determine the level of risk for each element below, estimate the risk level based on the Low/Medium/High scale. If your perceived rating is Medium or High, explore mitigations. Draw a line through the risk zone that corresponds to the mitigated risk level and document the perceived risk(s) and mitigation(s) in the space provided.

### Rate Risk Zone

**Planning** - Enough time and information to conduct thorough pre-mission planning & notifications. Consider: Completeness of mission information and of on-scene details/hazards, type and nature of discrepancy.

**NOTES/MITIGATIONS:**

Complete	Partial	None
<i>L</i>	<i>M</i>	<i>H</i>

**Event** - Refers to mission complexity. Consider: Non-standard mission profile, accessibility (remote location, distance offshore/range, brushing, etc.), spill severity/classification, vessel history, multi-agency coordination, language barriers, etc.

**NOTES/MITIGATIONS:**

Routine	infrequent	abnormal
<i>L</i>	<i>M</i>	<i>H</i>

**Asset – Crew** – Proper number and skill set for the mission. Consider: qualifications, experience, familiarity w/ AOR, crew physical/mental state (fatigue, stress, etc.), commute time, trailer hours, adequate supervision (span of control).

**NOTES/MITIGATIONS:**

Excellent	Marginal	Poor
<i>L</i>	<i>M</i>	<i>H</i>

**Asset – Equipment/PPE** – Required equipment in good working order, proper references, PPE/tools in good working condition available for mission. Consider: physical hazards and/or vapors, spaces requiring entry, structures requiring climbing.

**NOTES/MITIGATIONS:**

Ideal	Restrictions	Limitations
<i>L</i>	<i>M</i>	<i>H</i>

**Communications/Supervision** - Ability to maintain comms throughout mission. Consider: availability/quality of internal w/command and external w/other involved parties, backup comms, limited cell phone or radio service.

**NOTES/MITIGATIONS:**

Excellent	Partial	None
<i>L</i>	<i>M</i>	<i>H</i>

**Environment** – External & on-scene conditions surrounding mission. Consider: weather (Seas/Winds), temperature, night/day, currents/tides, visibility, etc.; physical hazards, road conditions, vapors, ongoing vessel ops, confined space entry, insects, etc.

**NOTES/MITIGATIONS:**

Ideal	Marginal	Extreme
<i>L</i>	<i>M</i>	<i>H</i>

**Other (Unit Specific Element):**

<i>L</i>	<i>M</i>	<i>H</i>
----------	----------	----------

**Other (Unit Specific Element):**

<i>L</i>	<i>M</i>	<i>H</i>
----------	----------	----------

## Step 2: Determine Overall Risk Level

Consider: 1) the rating for each element above, 2) the importance of the element for mission execution, and 3) how elements may interact. Rate the perceived **Overall Risk Level** when considering this information (**circle Low, Medium, or High**):

<b>Low</b>	<b>Medium</b>	<b>High</b>
------------	---------------	-------------

# U.S. Coast Guard Operations Risk Assessment

## Step 3: Determine Risk vs. Gain: Do gains warrant the risk?

**Step 3a.** Enter the **Overall Risk Level** (Step 2 on prior page) in the **RISK** box below (Low, Medium, or High).

**Step 3b.** Review the definitions for Gain below and enter the level in the **GAIN** box below. (Low, Medium, or High).

### Level of Gain

- **Low** – Situation with unclear benefits or a low probability for providing concrete results.  
*Examples: no threat to public safety, minor discharge or release, low environmental impact, minimal public interest/concern, non-urgent/times sensitive activity.*
- **Medium** – Situation that provides immediate and real benefits.  
*Examples: minor threat to public safety, medium discharge or release, significant environmental impact, public interest/concern, deterring illegal operations.*
- **High** – Situation that provides immediate and real benefits that if ignored could result in loss of life.  
*Examples: significant threat to public safety or national security, urgent SAR, major discharge or release, significant environmental impact, high public interest.*

Vs.

**RISK**

(Low, Med, High)

**GAIN**

(Low, Med, High)

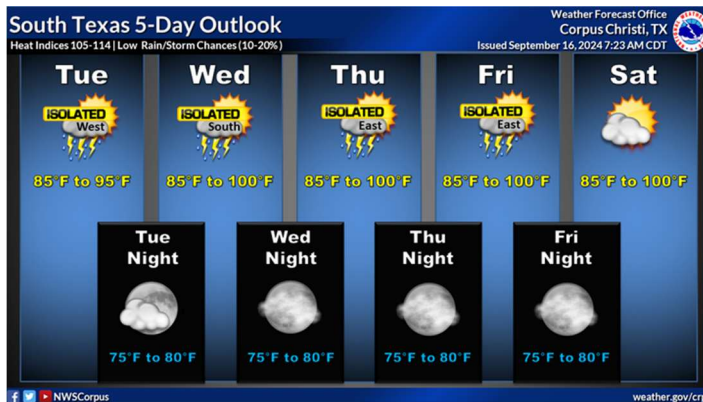
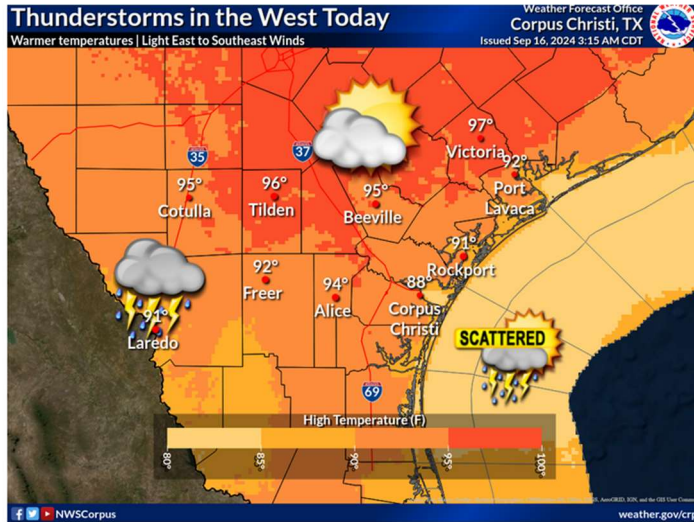
**Step 3c.** Use the **Risk vs. Gain** values from above and follow the column and row until they cross. The intersecting point is the recommended action.

*Example, if Risk is 'low' and Gain is 'medium', the recommendation is: "Accept the Mission. Continue to monitor Risk Factors, if conditions or mission changes".*

Risk vs. Gain	High Gain	Medium Gain	Low Gain
Low Risk	<b>Accept the Mission.</b> Monitor Risk Factors and re-evaluate if conditions or mission/activities change.	<b>Accept the Mission.</b> Monitor Risk Factors and re-evaluate if conditions or mission/activities change.	<b>Accept the Mission.</b> Monitor Risk Factors and re-evaluate if conditions or mission/activities change.
Medium Risk	<b>Accept the Mission.</b> Monitor Risk Factors and employ Controls when available. Re-evaluate if conditions or mission change.	<b>Accept the Mission.</b> Monitor Risk Factors and employ Controls when available. Re-evaluate if conditions or mission change.	<b>Accept the Mission Only with Command Endorsement</b> Communicate Risk vs. Gain to Chain of Command. Implement Controls and continuously evaluate conditions and mission for change.
High Risk	<b>Accept the Mission Only with Command Endorsement.</b> Communicate Risk vs. Gain to Chain of Command. Implement Controls and monitor Risk Factors. Continuously evaluate conditions and mission change.	<b>Accept the Mission Only with Command Endorsement.</b> Communicate Risk vs. Gain to Chain of Command. Implement Controls and monitor Risk Factors. Continuously evaluate conditions and mission change.	<b>DO NOT Accept the Mission.</b> Communicate to Chain of Command. Wait until Risk Factors change or Controls are available to warrant Risk exposure.

**NOTES:**

## Corpus Christi Weather:



## Packery Channel Tides:

Packery Channel, TX [8775792] [Station Home](#) [More Data](#) ×

### Today's Tides

Time	Tide	Height
12:44 AM	low	0.39 ft
12:40 PM	high	0.78 ft

### Recent Data

as of 9/16/2024 1:12 PM  
Local Time

- Water Level:** 1.56 ft Above MLLW
- Next Tide at**
- Water Temp:** 84.9 ° F
- Air Temp:** 80.4 ° F
- Barometric Pressure:** 1013.1 mb
- Winds:** 0.0 kts from WSW
- Gusting to:** 1.8 kts from WSW

Plot Data Standard Metric Auto-Refresh:

# Incident Action Plan

## Sea Turtle Cold-Stunning Event Media Talking Points for Responders

<b>Incident Name:</b> MON-YY Sea Turtle Cold-Stunning Event	<b>Date Prepared:</b>	<b>Time Prepared:</b>
<b>Operational Period Time:</b> From: DD MMM YY / TIME To: DD MMM YY / TIME		

- Cold-stunning happens when Sea Turtles become weak and inactive from exposure to cold temperatures, generally when water temperatures fall below 50°F. Cold-stunned Sea Turtles are lethargic, eventually becoming unable to swim, causing them to float at the surface and making them susceptible to drowning, boat strikes, and predation. If temperatures remain low and/or turtles are not rescued, they develop secondary health problems and can potentially die from the extreme temperatures.
- Upon receiving notification from our partners at Texas A&M University Corpus Christi Conrad Blucher Institute that water temperatures are forecasted to fall below 50°F anywhere across coastal Texas, we meet to commence the coordination of multi-agency and multi-organization resources from 19 federal, state, local partners before the drop in temperatures.
- Then following the cold front, responders go out to locate and rescue impacted sea turtles then transport them to rehabilitation facilities. At these facilities, trained wildlife care professionals and veterinarians ensure that the sea turtles are well cared for, warmed, and then released when rehabilitated.
- Sometimes we may find a sea turtle that may need long-term care due to its injuries. These same experts provide continuing care until they are fully healed and are able to be released back into the wild.
- Response and Rehabilitation Partners include: Texas Sea Turtle Stranding and Salvage Network, Padre Island National Seashore, U.S. Fish and Wildlife Service, National Oceanic and Atmospheric Administration, Texas Parks and Wildlife Department, Texas General Land Office, U.S. Coast Guard, Texas A&M University Corpus Christi Conrad Blucher Institute and Autonomy Research Institute, Gulf Center for Sea Turtle Research, Houston Zoo, Mid-Coast Sea Turtle Rescue, Amos Rehabilitation Keep (ARK), Texas Sealife Center, Texas State Aquarium, Sea Turtle Inc., Sea World San Antonio, Keep Aransas County Beautiful, Texas Master Naturalist Program, Coastal Bend Bays & Estuaries Program, Sea Tow, Nueces County Coastal Parks, and Turtle Island Restoration Network.
- Members of the public who locate a cold-stunned sea turtle are asked to contact the Texas Sea Turtle Hotline by calling 1-866-TURTLE-5 to report the sighting.
- Please do not attempt to rescue the sea turtle. Proper sea turtle handling techniques are vital to ensure the safety of the animal and the public. Our responders receive training on proper handling techniques to ensure safety of the animal and the responder.
- I could not be more excited to assist with this important initiative and provide aid to these endangered animals, helping to promote wildlife resiliency across the State of Texas.

<b>Prepared By:</b> Mike Griffin	<b>Position:</b> Planning Section Chief	<b>Date/Time</b> DD MMM YY / TIME
<b>Approved By:</b>	<b>Position:</b>	<b>Date/Time</b> DD MMM YY / TIME

# Public Affairs Guide

## Texas Cold-Stunned Sea Turtles

**Purpose:** The purpose of this Public Affairs Guide is to provide recommended media talking points and key messages to assist with media inquiries for consistent messaging among all partners.

**Background:** Cold-stunning happens when sea turtles become weak and inactive from exposure to cold temperatures, generally when water temperatures fall below 50°F. Cold-stunned sea turtles are lethargic, eventually becoming unable to swim, causing them to float at the surface and making them susceptible to drowning, boat strikes, and predation. If temperatures remain low and/or turtles are not rescued, they can develop secondary health problems and can potentially die from the extreme temperatures.

Sea turtle species that inhabit the Texas Coast are the green, loggerhead, hawksbill, Kemp's ridley and leatherback sea turtles. Most cold-stunned sea turtles that are found in Texas are juvenile green sea turtles.

Cold-stunned sea turtles are transported to rehabilitation facilities that have State and Federal permits and that meet all conditions detailed in the U.S. Fish and Wildlife Services' Standard Conditions for Care and Maintenance of Captive Sea Turtles.

Cold-stunned sea turtles are not held in captivity any longer than necessary. Once area waters have risen to safe temperatures and the individual turtles have recovered from hypothermia, they are released back into the wild. If they have other illnesses or injuries, they can rehabilitate until they are ready for release.

### **Key Messages:**

- Sea turtles become susceptible to a form of hypothermia when there is a sudden shift in weather patterns and water temperatures quickly drop below 50°F, typically between November and March. Cold-stunned sea turtles lose their ability to swim and dive and may exhibit no signs of life. Although a few cold-stunned turtles may be found on Gulf beaches, most are found inshore, along shorelines of bays, estuaries, and channels. They may be found floating on the water's surface, completely submerged in shallow water, or onshore. Live animals need to be rescued quickly before they are injured or die from predation, exposure, or boat strikes. During the winter, many sea turtles may be affected by cold weather and strand simultaneously, and this may occur for days, weeks, or months at a time.

- Partners from Texas A&M University Corpus Christi Conrad Blucher Institute forecast the bay water temperatures throughout the State of Texas during the cold weather season.
- Once water temperatures are forecasted to fall below 50°F, a Unified Command is established to coordinate response efforts and maximize the recovery and rehabilitation efforts of cold-stunned sea turtles.
- Following the cold front and forecasted low water temperatures, responders from more than 23 organizations and agencies go out to locate and rescue impacted sea turtles then transport them to rehabilitation facilities. At these facilities, trained wildlife care professionals and veterinarians ensure that the sea turtles are examined, well cared for, warmed, and then released when rehabilitated.
- Response and Rehabilitation Partners include: Texas Sea Turtle Stranding and Salvage Network, Padre Island National Seashore, U.S. Fish and Wildlife Service, National Oceanic and Atmospheric Administration, Texas Parks and Wildlife Department, Texas General Land Office, U.S. Coast Guard, Texas A&M University Corpus Christi Conrad Blucher Institute and Autonomy Research Institute, Gulf Center for Sea Turtle Research, Houston Zoo, Mid-Coast Sea Turtle Rescue, Amos Rehabilitation Keep (ARK), Texas Sealife Center, Texas State Aquarium, Sea Turtle Inc., Sea World San Antonio, Keep Aransas County Beautiful, Texas Master Naturalist Program, Coastal Bend Bays & Estuaries Program, Sea Tow, Nueces County Coastal Parks, and Turtle Island Restoration Network.

### **Questions/Answers:**

#### **Q1. What is cold-stunning of a sea turtle?**

**A1.** Like all reptiles, sea turtles are ectothermic (cold-blooded) and cannot regulate their body temperature. If water temperatures drop below approximately 50°F, sea turtles become lethargic and are unable to swim. They float up to the surface and become vulnerable to boat strikes or wash ashore and become stranded. If not rescued quickly, these defenseless animals often die of exposure, predation, or trauma. Hundreds or even thousands of sea turtles can be affected by cold-stunning events.

**Q2. What types of sea turtles inhabit the coastal waters of Texas?**

A2. Sea turtles species that inhabit the Texas Coast are the green, loggerhead, hawksbill, Kemp's ridley and leatherback sea turtles. The majority of sea turtles found cold-stunned in Texas are juvenile green sea turtles.

**Q3. If a member of the public sees a turtle, should they try and rescue it?**

A3. Proper sea turtle handling techniques are vital to ensure the safety of the animal and the public. Our responders receive training on proper handling techniques to ensure safety of the animal and the responder. Members of the public who wish to assist must first contact an authorized responder by calling 1-866-TURTLE-5 to report any sightings of cold-stunned or stranded sea turtles.

**Q4. How does the public report cold-stunned sea turtle sightings?**

A4. When locating a cold-stunned sea turtle, please call the Texas Sea Turtle Hotline at 1-866-TURTLE-5 (887-8535). It is important to obtain information from the observer regarding the date and time of observation, location of sighting, the number of turtles, the condition of the turtles, and the accessibility of the turtles.

**Q5. Why don't sea turtles leave the area prior to cold weather?**

A5. Green sea turtles are herbivores, which means that they feed primarily on plants. Their main sources of food in this area are the algae that grow on the rocks lining local jetties, and the sea grasses that grow in the bays and Laguna Madre. When water temperatures drop quickly, which happens in shallow bays, the turtles do not have enough time to move into the warmer waters of the Gulf of Mexico.

**Q6. How are water temperatures forecasted?**

A6. Partners from Texas A&M University Corpus Christi Conrad Blucher Institute and other participating organizations have developed a water temperature prediction system for mitigation of cold-water events using advanced technologies to forecast water temperatures across inland bays of the State of Texas.

**Q7. Who rescues these cold-stunned sea turtles?**

A7. Response and Rehabilitation Partners from more than 21 agencies and organizations respond to reports and conduct searches to locate these hypothermic cold-stunned sea turtles, rescue them, and then transport them to rehabilitation organizations.

- Response and Rehabilitation Partners include: Texas Sea Turtle Stranding and Salvage Network, Padre Island National Seashore, U.S. Fish and Wildlife Service, National Oceanic and Atmospheric Administration, Texas Parks and Wildlife Department, Texas General Land Office, U.S. Coast Guard, Texas A&M University

Corpus Christi Conrad Blucher Institute and Autonomy Research Institute, Gulf Center for Sea Turtle Research, Houston Zoo, Mid-Coast Sea Turtle Rescue, Amos Rehabilitation Keep (ARK), Texas Sealife Center, Texas State Aquarium, Sea Turtle Inc., Sea World San Antonio, Keep Aransas County Beautiful, Texas Master Naturalist Program, Coastal Bend Bays & Estuaries Program, Sea Tow, Nueces County Coastal Parks, and Turtle Island Restoration Network.

**Q8. What happens to the sea turtles once rescued?**

A8. Sea turtles rescued during cold-stunning events are documented and transported to rehabilitation partner organizations for care. These partners have the permits and facilities needed to care for and rehabilitate sea turtles. Without their contributions and expertise, and the members of the public who report sightings, many cold-stunned sea turtles would not survive.

**Q9. How long does it take for a cold-stunned sea turtle to recover?**

A9. Cold-stunned sea turtles that are otherwise healthy tend to recover quickly, within a few days. Cold-stunned sea turtles are not held in captivity any longer than necessary. Once area waters have risen to safe temperatures and the individual turtles have recovered from hypothermia, they are released back into the wild. If they have other illnesses or injuries, they will be rehabilitated until they are recovered and cleared by a veterinarian for release.

**Q10. How many sea turtles are cold-stunned each year?**

A10. The number of cold-stunned sea turtles that strand varies from year to year depending on the number of turtles in the area and on the number, frequency, duration, and severity of cold weather events. If the winter is very mild, there may be few to no cold-stunned turtles, but if there are several severe cold fronts over a short period of time with each one lasting several days, hundreds to even thousands of turtles may strand.

**Q11. Can cold-stunning be prevented?**

A11. No, there is no way to prevent cold-stunning events. As all sea turtles are threatened or endangered species under the Endangered Species Act of 1973, as amended (16 U.S.C. 1531 et seq.), the goal of response to these events is to save as many turtles as feasible and return them to the wild. This goal requires substantial efforts by a collective network of government wildlife agencies, rehabilitation facilities, stranding organizations, and volunteers.