

## Espiritu Santo & San Antonio Bay Assignments as of Feb 19, 2021

Also includes Matagorda Bay area near Port O'Connor.

Direct questions to Allan at 713-829-2852 or [allanrberger@outlook.com](mailto:allanrberger@outlook.com)

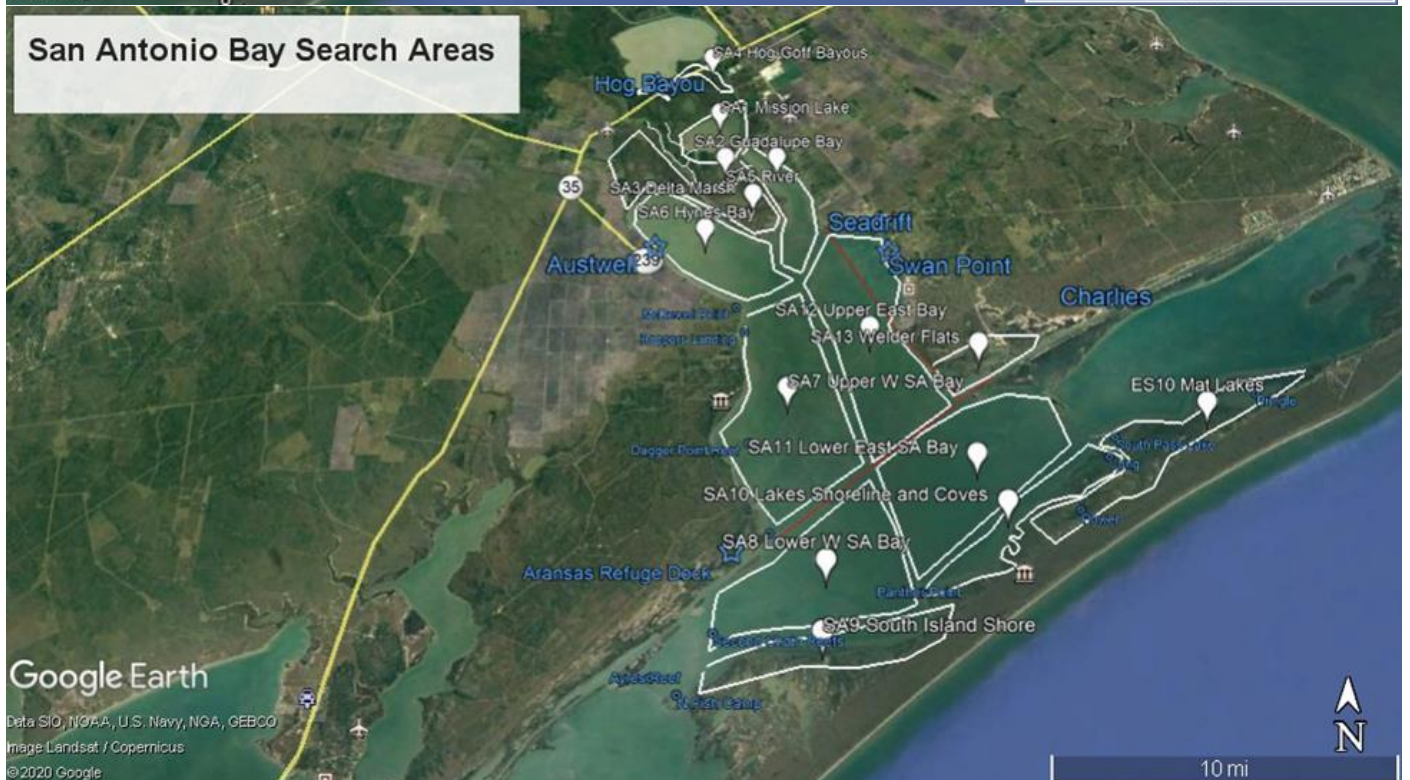
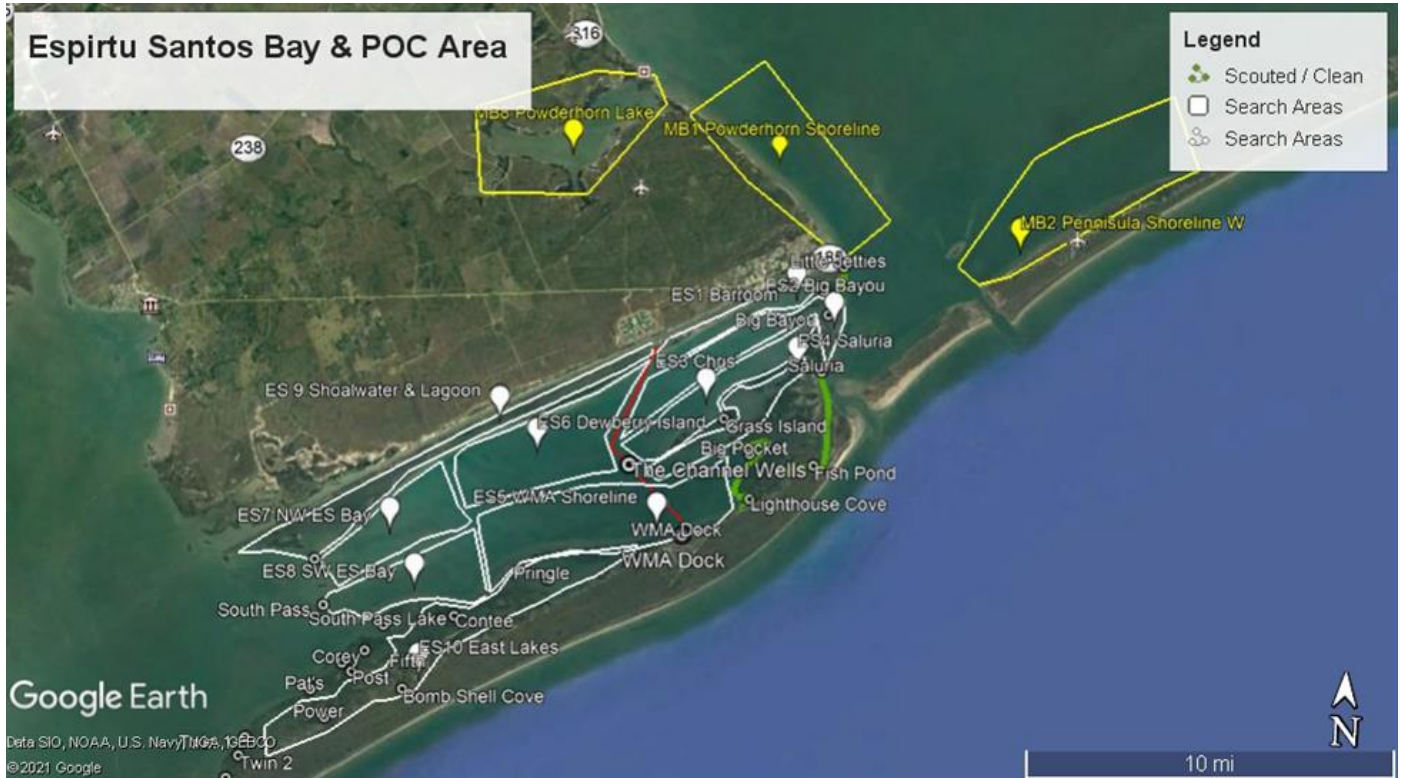
<b>Plan B</b>	<b>Assignments as of 2/19/21</b>		
<b>Day</b>	<b>Team</b>	<b>Area</b>	<b>Route</b>
<b>Mon 2/22</b>	USFW 4 boats - start working - rest of week as available & needed	SA 8, 9, 14+ Blackjack Shoreline; AB 1-6; ES 10 East Island Lakes	
	Venable - Advocate 10am	TBD	
	ABerger + Doug Berger + Rusty Crane - noon	ES 6 Blueberry Island from POC	AF Cut south to Charlies Cut
	Mike Mitchell	tag team with Berger	
	Turney + Dodson + Rari - 11am	SA 6 Hynes Bay from Austwell	
	Kowal TPWD - different day?	near dock-, eg Barroom?	
<b>Tue 2/23</b>	ABerger + Brigid + Cranes	ES 5 W TPWD to Contee from POC	
	Turney +Rari + Tracey Bennett - 11am	SA 7 Upper W SA Bay from Austwell	
	BayFlats Airboat- Perry +Sanderson + Risinger	SA 1 Mission Lake	
<b>Wed 2/24</b>	Shelly + Sterling	Aerial Recon	All 3 bay system shorelines
	ABerger + Pletcher + Threatt	ES 8 SW ES Bay	from POC
	Turney + ?	SA 8 Lower W SA Bay from Goose Island?	
	CBBEP Boat ?	with Turney	
	BayFlats Airboat- Perry+Sanderson+Risinger	SA 3 Delta Marsh; SA 13 Welder Flats	
	Dobski (or whatever date you prefer)	ES 4 - SALURIA	Saluria west to Bayucos Point and to south Grass Island and Farwell Island

**Espiritu Santo & San Antonio Bay Assignments as of Feb 19, 2021**

<b>Thur 2/25</b>	Berger + David Berger + Libby	Continue Matagorda Island SA 10	
	Turney + ?	SA 11 or 12 from Goose Island	
	GBRA - 3 Boats (continuing Friday as needed)	SA 2 Guadalupe Bay	from Austwell
		SA 4 Hog Bayou	
		SA 5 River	
		SA 6 Hynes Bay	
<b>Fri 2/26</b>	GBRA - cont from Austwell		
	Berger + Dodson	Finish SA10	
	Turney + Balboa + Pilson	TBD - Sweep Matagorda Bay?	
<b>Sat 2/27</b>	Delesandri	MB2 & MB 3- Matagorda Peninsula	Ship Channel east
	Hammons	MB 8 Powderhorn Lake	Powderhorn Lake, both shorelines, into Coloma Creek
	Hammons	MB1 Powderhorn Shoreline	Matagorda Bay Shoreline - Indianola to POC
	Wallace	ES 1 - BARROOM	Barroom Bay & old canal, Blackberry Shore to Army Cut
	Doug Berger + Brenda + Ashley	ES 2 - BD REEF	Big Bayou, Bill Day's Reef & west into ES Bay to Army Channel
	Barnes	ES 3 - BAYUCOS	Chris's Cut & west into Bay & along Bayucos & Grass Island shores to tip Grass Island
	Barton / Goldman	ES 9 Shoalwater & Lagoon	
	Kern	ES 7 NW ES Bay	North half Bay: Charlies- Steamboat
	Scouted / Clean	ES 5 E - BIG POCKET / LIGHTHOUSE COVE	Big Pocket and Lighthouse Cove
	Conway	SA 12	
	ABerger + Shells + Alejandro	TBD- Sweep ES and LowerSA Bay?	
	Turney + E Smith + ?	TBD - sweep Upper SA Bay?	
	Franck	Lavaca Bay thru Janet	

## Espiritu Santo & San Antonio Bay Assignments as of Feb 19, 2021

<b>Sun 2/28</b>	A Berger + ?	TBD	
	T Turney ?	TBD	



**Espiritu Santo & San Antonio Bay Assignments as of Feb 19, 2021**

## Espiritu Santo & San Antonio Bay Assignments as of Feb 19, 2021

For other Bay Systems, contact

Aransas Bay System	Katie Swanson	716-397-8294	katie.swanson@utexas.edu
Matagorda Bay	Bill Balboa	361-781-2171	bbalboa@matbay.org
Lavaca Bay	Janet Weaver	361-920-0818	info@lavacabat.org